



human settlements

Department:
Human Settlements
REPUBLIC OF SOUTH AFRICA

INCWADI YOMTHETHO WOKUKHUTHAZWA KOFIKELELO KULWAZI (PROMOTION OF ACCESS TO INFORMATION ACT) (PAIA)

*Ilungiswe ngokweCandelo le-14 lomThetho wokuKhuthazwa koFikelelo kuLwazi,
2000
(UmThetho oyiNombolo yesi-2 ka-2000)*

ISBN NUMBER: 978-0-620-73815-6

2016-2017

Iziqulatho

INTSHAYELELO	iv
INKCAZO YAMAGAMA	vii
1. INTSHAYELELO	1
2. IINJONGO ZOMTHETHO	1
3. INJONGO YENCWADI	1
4. ISIKHOKELO SOKUBA UYISEBENZISA NJANI I-PAIA (ICANDELO LE-10).....	2
5. ULWAZI LOQHAGAMSHELWANO.....	2
6. IGUNYA LOMTHETHO ELAZISA IMISEBENZI YESEBE	3
7. IMISEBENZI KUNYE NOKWAKHIWA KWESEBE LEENDAWO ZOKUHLALISWA KWABANTU	3
7.1. ISISHWANKATHELO SESICWANGCISO	3
7.2. UKWAKHIWA KWEQUMRHU LESEBE	4
7.3. IINKONZO EZINIKWA LISEBE	5
7.4. IINKQUBO ZESEBE	7
8. UFIKELELO KWIIREKHODI EZIGCINWE LISEBE	9
8.1. IINDIDI ZEEREKHODI EZIGCINWE LISEBE	9
9. INKQUBO YOKUCELA UFIKELELO KULWAZI	20
9.1. NGUBANI ONGACELA ULWAZI?	20
9.2. INDLELA YOKUFIKELELA KULWAZI	20
9.2.1. IIREKHODI EZIFUMANEKA NGAPHANDLE KWESICELO.....	20
9.2.2. IZICELO ZOMNXEBA	20
9.2.3. IZICELO ZOMLOMO	20
9.3. IZICELO EZISESIKWENI NGOKWEEMFUNENI ZE-PAIA	21
9.4. AMAXESHA EKULINDELEKE UKUBA KUJONGWE NGAWO IZICELO	21
9.5. IIMALI EZIHLAWULWAYO	21
9.5.1. IMALI YESICELO ENGABUYISWAYO	22
9.5.2. IMALI EHLAWULELWA UFIKELELO	22
9.5.3. IIDIPHOSITHI	22
9.5.4. UNYENYISO.....	23
10. UFIKELELO OLWALIWEYO KUNYE NEZIBHENO	23
10.1. IMIHLABA YOKWALA	23
10.2. UKUXELA OKUGUNYAZISIWEYO NGOKUSEMDLENI WOLUNTU	23
10.3. UKUTHATHA NGOKUBA SIYALIWA ISICELO.....	23
10.4. AMANYATHELO UKUBA SIYALIWA ISICELO SOFIKELELO	23
10.4.1. ISIBHENO SANGAPHAKATHI	24
10.4.2. UKUFAKA ISIBHENO SANGAPHAKATHI	24
10.4.3. USEKELA GOSA LOLWAZI KUFUNEKA ADLULISELE ISIBHENO SANGAPHAKATHI KUGUNYAZIWE OFANELEKILEYO	24
10.5. ISICELO ESIYA ENKUNDLENI	24
11. UKUFUMANEKA KWENCWADI	24
12. UKUHLAZIYWA NOKUJONGWA KWAKHONA KWENCWADI	24

IZIHLOMELO

A	limali ezihlawulwayo
B	Ifom A: Isicelo sofikelelo
C	Ifom B: Isibheni sangaphakathi

INTSHAYELELO

ICandelo lama-32 loMgaqo-siseko weRiphabliki yoMzantsi Afrika, 1996 (uMgaqo-siseko) linika wonke umntu ilungelo lofikelelo kulo naluphi na ulwazi wazi olugcinwe ngurhulumente okanye ngomnye umntu kwaye olufunekayo ukusebenzisa okanye ukukhusela naliphi na ilungelo.

UmThetho wokuKhuthazwa koFikelelo kuLwazi, 2000 (umThetho oyiNombolo yesi-2 ka-2000) (PAIA) ekuphunyenzweni kwala malungelo, ingakumbi-

- Linika onke amaqumrhu karhulumente uxanduva lokuququzelela ufikelelo loluntu kulwazi/i(ii)rekhodi eziphantsi kogcino lwawo;
- Libonelela ngenkqubo-sikhokelo kunye neenkqubo kuluntu ukuba lusebenzise ilungelo lalo lomgaqo-siseko kulwazi ngokulula, ngokungabiziyo kunye nokungabikho kweenzame ngokufaneleke kangangoko;
- Limisela iindlela ezo amaqumrhu karhulumente ekufuneka alungise ngazo, ukuququzelela ufikelelo kulwazi olunjalo ngamalungu oluntu; kwaye
- Lixela iimeko ezo olu fikelelo lunyiniweyo luza kusebenza ngazo, kuqkwa nezo zinxulumene nolwazi lobuqu, lwezorhwebo, lwezimali, lobuchwepheshe okanye lwezululwazi olumalunga neqela lesithathu, ulwazi olunokuchaphazela iinkqubo zenkundla okanye zamapolisa kwiinkqubo zebheyile ngokunjalo nakwiindidi ezithile zolwazi olunxulumene neeNkonzo zeRhafu zoMzantsi Afrika.

Ngokungathandabuzekiyo ikhona imida ekuphunyenzweni kwamalungelo oluntu njengoko kuxeliwe kwicandelo lama-36 loMgaqo-siseko kunye neCandelo lama-33 ukuya kwelama-45 lomThetho we-PAIA, ngokulandelelana.

Ngokungqinelana neemfuneko zomthetho ze-PAIA kunye nokufaka isandla ekukhuthazeni ukungafihli kwisebe, ukuthatha uxanduva kunye nolawulo olusebenzayo, iSebe lezokuHlaliswa kwabaNtu liye lakhupha incwadi njengendlela yokuququzelela ufikelelo loluntu kulwazi/i(ii)rekhodi eziphantsi kogcino lwalo.

Kuyathenjwa ukuba le ncwadi iza kusebenza njengomgangatho/isixhobo esisebenzayo sokunika uluntu ulwazi olubalulekileyo lokwenza ukuba lusebenzise ilungelo lalo lofikelelo kulwazi oluphantsi kogcino lweSebe.



M.TSHANGANA
UMLAWULI JIKELELE
ISEBE LEENDAWU ZOKUHLALISWA KWABANTU
UMHLA: 19/09/2016

IZIFINYEZO

BAS	: Basic Accounting System (IiNgxelo zeNkqubo yoCwangciso -mali esiSiseko)
BNG	: Breaking New Grounds (uKwenza okwaHlukileyo)
CD	: Chief Director (UMlawuli oyiNtloko)
CSOS	: Community Scheme Ombud Services (IiNkonzo zoMmeli weSikim soluNtu)
DDG	: Deputy Director-General (Sekela Mlawuli Jikelele)
DFI	: Development Finance Institutions (amaZiko eNkxaso yoPhuhliso)
DHS	: Department of Human Settlements (ISebe lezokuHlaliswa kwabaNtu) (“iSebe”)
DIO	: Deputy Information Officer (Sekela Gosa loLwazi)(elonyulwe ngokwecandelo le-17 le-PAIA)
EAAB	: Estate Agency Affairs Board (iBhodi yeMicimbi yee-Arhente zeziNdlu)
FLISP	: Finance Linked Individual Subsidy Programme (INkqubo yeNkxaso yomNtu EDityaniswe kwiMali)
HDA	: Housing Development Agency (I-Arhente yoPhuhliso lweziNdlu)
HR	: Human Resource (ImiCimbi eNxulumene nabaSebenzi)
HS	: Human Settlements (iiNdawo zokuHlala abaNtu)
HSDG	: Human Settlements Development Grant (INkxaso yoPhuhliso lweNdawo ZokuHlala abaNtu)
HSS	: Housing Subsidy System (INkqubo yeNkxaso yeziNdlu)
I-ICT	: Information and Communication Technology (ubuChwepheshe boLwazi noNxibelelwano)
IO	: Information Officer (uMlawuli -Jikelele weSebe)
MEIA	: Monitoring, Evaluation and Impact Assessment (ukuHlola, ukuJonga kunye noHlolo lweMpembelelo)
NHBRC	: National Home Builders Registration Council (IBhunga loBhaliso lwaBakhi beziNdlu leSizwe)
NHFC	: National Housing Finance Corporation (IQumrhu leNkxaso yeziNdlu leSizwe)
NURCHA	: National Urban Reconstruction and Housing Agency (I-Arhente yoKwakha kunye neziNdlu zaseziDolophini yeSizwe)
PAIA	: Promotion of Access to Information Act, 2000 (Act No.2 of 2000) (UmThetho wokuKhuthazwa koFikelelo kuLwazi), 2000 (umThetho wesi-2 ka-2000)
PDHS	: Provincial Department of Human Settlement (: ISebe lePhondo leeNdawo zokuHlaliswa kwabaNtu)
PHP	: People's Human Settlement Process (iNkqubo yabaNtu yeeNdawo zokuHlaliswa)

	kwabaNtu)
RHLF	: Rural Housing Loan Fund (INgxowa-mali yeMali-Mboleko yeziNdlu yaseMaphandleni)
SABC	: South African Broadcasting Corporation (iQumrhu loSasazo loMzantsi Afrika)
SAHRC	: South African Human Rights Commission (iKomishoni yamaLungelo oluNtu yoMzantsi Afrika)
SALGA	: South African Local Government Association (UMbutho wooRhulumente beNgingqi woMzantsi Afrika)
SHRA	: Social Housing Regulatory Authority (UGunyaziwe oLawula iziNdlu zasekuHlalani)
SLA's	: Service Level Agreements (iZivumelwano zeNqanaba leNkonzo)
USDG	: Urban Settlement Development Grant (INkxaso yoPhuhliso lweNdawo zokuHlala abaNtu eziDolophini)

INKCAZO YAMAGAMA

	Igama	INkcazo/iNkcazelo
1.	IMali ehlawulelwa ufikelelo	Imali ehlawulwa ngumceli yokukhangela, ukulungisa kunye nokuvelisa iirekhodi eziceliweyo, njengoko kumiselwe yi- PAIA iCandelo lama-22(6).
2.	UmThetho	UmThetho wokuKhuthazwa koFikelelo kuLwazi, 2000 (umThetho wesi-2 ka-2000) ekuKwabhekiselwa kuwo njenge-PAIA opkanye 'umThetho'.
3.	ISebe	ISebe leeNdawo zokuHlaliswa kwabaNtu. Ekukwabhekiselwa kulo njenge-DHS.
4.	USEkela Gosa loLwazi (Deputy Information Officer) (DIO)	Umntu owonyulwe nguMlawuli-Jikelele ukuba anike iqumrhu likarhulumente ufikelelo kangangoko kufanelekile kubaceli beerekhodi zalo njengoko kuxeliwe kwi-PAIA iCandelo le-17(1).
5.	Isikhokelo	Uxwebhu okanye incwadi ekhutshwe yiKomishoni yamaLungelo oluNtu yoMzantsi Afrika ngeenjongo zokunceda nawuphi na umntu onqwenela ukusebenzisa naliphi na ilungelo ngokwe-PAIA njengoko kuxeliwe kwiCandelo le-10.
6.	IGosa loLwazi (Information Officer) (IO)	UMlawuli Jikelele weSebe leeNdawo zokuHlaliswa kwabaNtu njengoko kuchaziwe kwi-PAIA icandelo loku-1.
7.	Isibheni sangaphakathi	Isibheni kwisigqibo sokwala ufikelelo kulwazi, njengoko kuxeliwe kwi-PAIA icandelo lama-74.
8.	ULwazi lobuQu	Ulwazi olumalunga nomntu onokwaziwa, kuquka kodwa kungamiselwanga mda ngokunxulumene nohlanga, isini, ubuni, ukukhulelwa, isimo somtshato, imvelaphi yobuzwe okanye yentlalo, umbala, indlela okhetha ukuziphilela ngayo ngokwesini, iminyaka, impilo yomzimba okanye yengqondo, ukuphila, ukukhubazeka, inkolo, isazela, inkolelo, inkcubeko, Ulwimi kunye nokuzalwa komntu njengoko kuchaziwe kwi-PAIA iCandelo loku-1.
9.	UMceli wobuqu	Umntu ofuna ufikelelo kulwazi/irekhodi equlethe ulwazi lobuqu malunga naye njengoko kuchaziwe kwi-PAIA iCandelo loku-1.
10.	Iqumrhu likarhulumente	Naliphi na isebe likarhulumente okanye ulawulo kwicandelo likarhulumente lesizwe okanye lephondo, nawuphi na umasipala kwicandelo lengingqi likarhulumente okanye iziko elenza umsebenzi karhulumente ngokwawo nawuphi na umthetho njengoko kuchaziwe kwi-PAIA icandelo loku-1. Ekukwabhekiselwa kulo njengequmrhu okanye isebe likarhulumente.
11.	Irekhodi	Naluphi na ulwazi olurekhodiweyo, ngalo naluphi na uhlobo phantsi kogcino lwe-DHS njengoko kuchaziwe yi-PAIA icandelo loku-1.
12.	Ezifumaneka ngaphandle kwesicelo	Iirekhodi ekunokufikelwa kuzo ngaphandle kokuba umntu acele ufikelelo ngokomThetho njengoko kuxeliwe kwiCandelo le-15(1)(a) le-PAIA.
13.	Ezifumaneka ngesicelo	Iirekhodi ekunokufikelelwa kuzo ngokulandela iinqubo ze-PAIA njengoko kuxeliwe kwi-PAIA icandelo le-11 nele-18; ufikelelo kwezi rekhodi lunokwaliwa ngokusekelwe kumacandelo elama-33 kunye nelama-45 lomThetho.
14.	Ugunyaziwe	UMphathiswa weSebe leeNdawo zokuHlaliswa kwabaNtu okanye

	obandakanyekayo	umntu owonyuliweyo ngokubhalwe phantsi nguMphathiswa osebenza ngeziBheno zangaPhakathi njengoko kuchaziwe kwi-PAIA icandelo loku-1.
15.	Imali ehlawulelwa isicelo	Imali ehlawulwayo engabuyiswayo ehlawulwa ngumcelixa engenisa isicelo sofikelelo ngokwamagatya e-PAIA iCandelo lama-22(1). (UMceli wobuQu onyenyiselweyo ukuhlawula imali ehlawulelwa isicelo).
16.	Isicelo sofikelelo	Isicelo sofikelelo kwirekhodi okanye iirekhodi ezigcinwe liSebe esenziwe ngokungqinelana ne-PAIA iCandelo lesi-8 nele-11.
17.	Umceli	Nawuphi na umntu owenza isicelo sofikelelo kulwazi okanye iirekhodi ze-DHS okanye umntu owenza egameni lomntu ocela ulwazi njengoko kuxeliwe kwi-PAIA icandelo loku-1.
18.	Iqela lesithathu	Nawuphi na umntu, kuqukwa, kodwa kungamiselanga mda, kurhulumente welizwe elithile, umbutho wamazwe ngamazwe okanye iziko laloo rhulumente okanye umbutho ngaphandle komceli obandakanyekayo kunye nequmrhu likarhulumente njengoko kuchaziwe kwi-PAIA icandelo loku-1.
19.	Iintsuku zokusebenza	Naluphina usuku ngaphandle koMgqibelo, iCawe okanye iholide kawonke-wonke njengoko kuchaziwe kwi-PAIA icandelo loku-1.

1. INTSHAYELELO

Le ncwadi iqulunqwe njengemfuneko yomthetho ekuthobeleni amagatya ecandelo le-14 lomThetho wokuKhuthaza uFikelelo kuLwazi (oyiNombolo yesi-2 ka-2000), (PAIA) eligunyazisa onke amaqumrhu karhulumente ukuba aqulunqe kwaye apapashe incwadi ekhombisa ulwazi/iirekhodi eziphantsi kogcino lwalo esele zilungele ukufumaneka kuluntu, ngokunjalo nezo kufuneka zicelwe ngokwamagatya omThetho.

Le ncwadi imele kuphela iSebe leeNdawo zokuHlaliswa kwabaNtu kwaye ayiquki ulwazi/iirekhodi zamaSebe awohlukeneyo amaPhondo.

2. IINJONGO ZOMTHETHO

Iinjongo ze-PAIA ngokwecandelo le-9 zezi –

- Ukwenza kusebenze ilungelo lomgaqo-siseko kulwazi olugcinwe ngurhulumente kunye nalo nalphi na ulwazi olugcinwe ngomnye umntu okanye ukhuselo lwalo nalphi na ilungelo;
- Ukwenza kusebenze ilungelo lofikelelo kulwazi; ngokuxhomekeke kwimida enobulingisa, kuqukwa, kodwa kungamiselwanga mda, kwimida joliswe kukhuselo olufanelekileyo lobucala, ubumfihlo bezorhwebo kunye nolawulo olusebenzayo, olwaneleyo nolulungileyo; kunye nangendlela engqinelanisa elo lungelo kunye nawo nawaphi na amanye amalungelo, kuqukwa namalungelo akukuMqulu wamaLungelo kwiSahluko sesi-2 soMgaqo-siseko;
- Ukwenza kusebenze izibophelelo zomgaqo-siseko zikarhulumente zokuphakamisa inkcubeko yamalungelo oluntu kunye nobulungisa kwezentlalo;
- Ukuseka iindlela okanye iinkqubo zokuzithandela kunye nezigunyazisiweyo zokwenza kusebenze ilungelo lofikelelo kulwazi ngendlela eyenza ukuba abantu bakwazi ukufumana iirekhodi zamaqumrhu karhulumente nawabucala ngokulula, ngokungabiziyo kunye nokungabikho kweenzame ngokufaneleke kangangoko; kunye
- Nokukhuthaza ukungafihli, ukuthatha uxanduva kunye nolawulo olusebenzayo lwawo onke amaqumrhu karhulumente nawabucala.

3. INJONGO YENCWADI

Le ncwadi yenzelwe:

- Ukubonelela ngolwazi ngokwakhiwa, imisebenzi kunye neenkonzo ezinikwa liSebe leeNdawo zokuHlaliswa kwabaNtu (Department of Human Settlements) (DHS) kuluntu kunye nokuba ufikelela njani kuzo;
- Ukunika ulwazi malunga nolwazi loqhagamshelwano lwesebe kuqukwa iinkcukacha zeposi, iidilesi zesitalato neposi yelectroniki; iinombolo zomnxeba nefeksi zeGosa loLwazi kunye noSekela Gosa loLwazi (Deputy Information Officer) (DIO);
- Ukunika uluhlu lweerekhodi ezifumaneka ngaphandle kwesicelo eziphantsi kogcino lwesebe;
- Ukuxela iinkqubo emazilandelwe ngamalungu oluntu ukufikelela kulwazi oluphantsi kogcino lwe-DHS, ngokungqinelana namagatya e-PAIA.

4. ISIKHOKELO SOKUBA UYISEBENZISA NJANI I-PAIA (ICANDELO LE-10)

IKomishoni yamaLungelo oluNtu yoMzantsi Afrika (South African Human Rights Commission) (SAHRC), iqulunqe isikhokelo ngokusetyenziswa kwe- PAIA, njengoko kumiselwe licandelo le-10 lomThetho. Isikhokelo sifumaneka kwii-ofisi ze-SAHRC.

I-Ofisi enguNdlunkulu
IKomishoni yamaLungelo oluNtu yoMzantsi Afrika
33 Hoofd Street
Forum III - Braampark
Braamfontein
Johannesburg, Gauteng
2014

INombolo yomNxeba: +27 11 877 3600/3803
Inombolo yefeksi: +27 11 403 0625
Idilesi ye-imeyile: paia@sahrc.org.za
Iwebhusayithi: www.sahrc.org.za

5. ULWAZI LOQHAGAMSHELWANO

5.1. IGosa loLwazi (Information Officer) (IO)

Njengoko kubonelelwe kumThetho, Umlawuli-Jikelele yi-IO.

Umlawuli Jikelele: Mnu M Tshangana
Mnxeba: +27 12 421 1486/1312/444 5246
Ifeksi: +27 12 421 2998
I-imeyile: InformationOfficer@dhs.gov.za

5.2. USekela Gosa loLwazi (Deputy Information Officer) (DIO)

Umlawuli oyiNtloko: iNkxaso yeQumrhu wonyulwe njenge-DIO, njengoko kunikiwe kwicandelo 17(1) lomThetho.

USekela Gosa loLwazi: Mnu M Moerane
Mnxeba: +27 12 444 9006
Ifeksi: +27 86 510 8601
I-imeyile: DeputyInformationOfficer@dhs.gov.za

5.3. IYunithi ye-PAIA

Iyunithi ye-PAIA iququzelela ulungiselelo lofikelelo lukawonke-wonke kulwazi lwesebe.

Mnxeba: +27 12 444 9045/57/58
Ifeksi: 086 4711939
I-imeyile: paia@dhs.gov.za

5.4. Ulwazi jikelele

IDilesi yePosi: Private Bag X644
PRETORIA
0001
IDilesi yeSitalato: Govan Mbeki House
240 Justice Mahomed Street
PRETORIA
0002
Mnxeba: +27 12 421 1311
Ifeksi: +27 12 341 8512/+27 12 444 9000
I-imeyile: info@dhs.gov.za
IWebhusayithi: www.dhs.gov.za

6. IGUNYA LOMTHETHO ELAZISA IMISEBENZI YESEBE

- UMgaqo-siseko weRiphabliki yoMzantsi Afrika, 1996
- UmThetho weziNdlu, 1997 (umThetho oyiNombolo ye-107 ka-1997)
- OkuTsha: UYilo oluBanzi lokuDalwa kweeNdawo zokuHlala abaNtu eziziNzileyo
- UmThetho oYilwayo oQukayo weziNdlu (2007)
- UmThetho wamaNyathelo oKhuselo lwabaXhasi beziNdlu oTshintshayo, 2007 (umThetho oyiNombolo ye-17 ka-2007)
- UmThetho we-Arhente yoPhuhliso lweziNdlu, 2008 (umThetho oyiNombolo yama-23 ka-2008)
- UmThetho woLawulo lweMali kaRhulumente, 1999 (umThetho woku-1 ka-1999) njengoko utshintshwe ngumThetho wama-29
- UmThetho weziNdlu zasekuHlalani, 2008 (umThetho oyiNombolo ye-16 ka-2008)
- UmThetho wokuHlulwa kweNgeniso, 2015 (umThetho woku-1 ka-2015) njengoko utshintshiwe
- UmThetho weNgqesho yeziNdlu, 1999 (umThetho oyiNombolo yama-50 ka-1999)
- UmThetho weNgqesho yeziNdlu oTshintshiweyo, 2007 (umThetho oyiNombolo yama-43 ka-2007)
- UmThetho wokuXela iMali-Mboleko yeziNdlu neBhondi, 2000 (umThetho oyiNombolo yama-63 ka-2000)
- UmThetho woLawulo lweziKim zeeTayitile eziHlanganyelweyo, 2011 (umThetho oyiNombolo yesi-8 ka-2011)
- UmThetho weNkonzo yoMmeli weziKim zoluNtu, 2011 (umThetho oyiNombolo ye-9 ka-2011)
- INkqubo-sikhokelo yoNxulumano olukooRhulumente, 2005 (umThetho oyiNombolo ye-13 ka-2005)
- UmThetho oThintela ukuKhutshwa okungekho mThethweni kunye nokuHlala okungekho mThethweni eMhlabeni, 1998 (umThetho oyiNombolo ye-19 ka-1998)
- UmThetho weMicimbi eNxulumene nokuQeshisa nokuThengiswa kweziNdlu, 1976 (umThetho oyiNombolo ye-112 ka-1976)
- ISicwangciso soPhuhliso seSizwe

7. IMISEBENZI KUNYE NOKWAKHIWA KWESEBE LEENDAWO ZOKUHLALISWA KWABANTU

7.1. ISISHWANKATHELO SESICWANGCISO

7.1.1. UMBONO: Isizwe esihlaliswe kwiindawo zokuhlaliswa abantu ezizinzileyo.

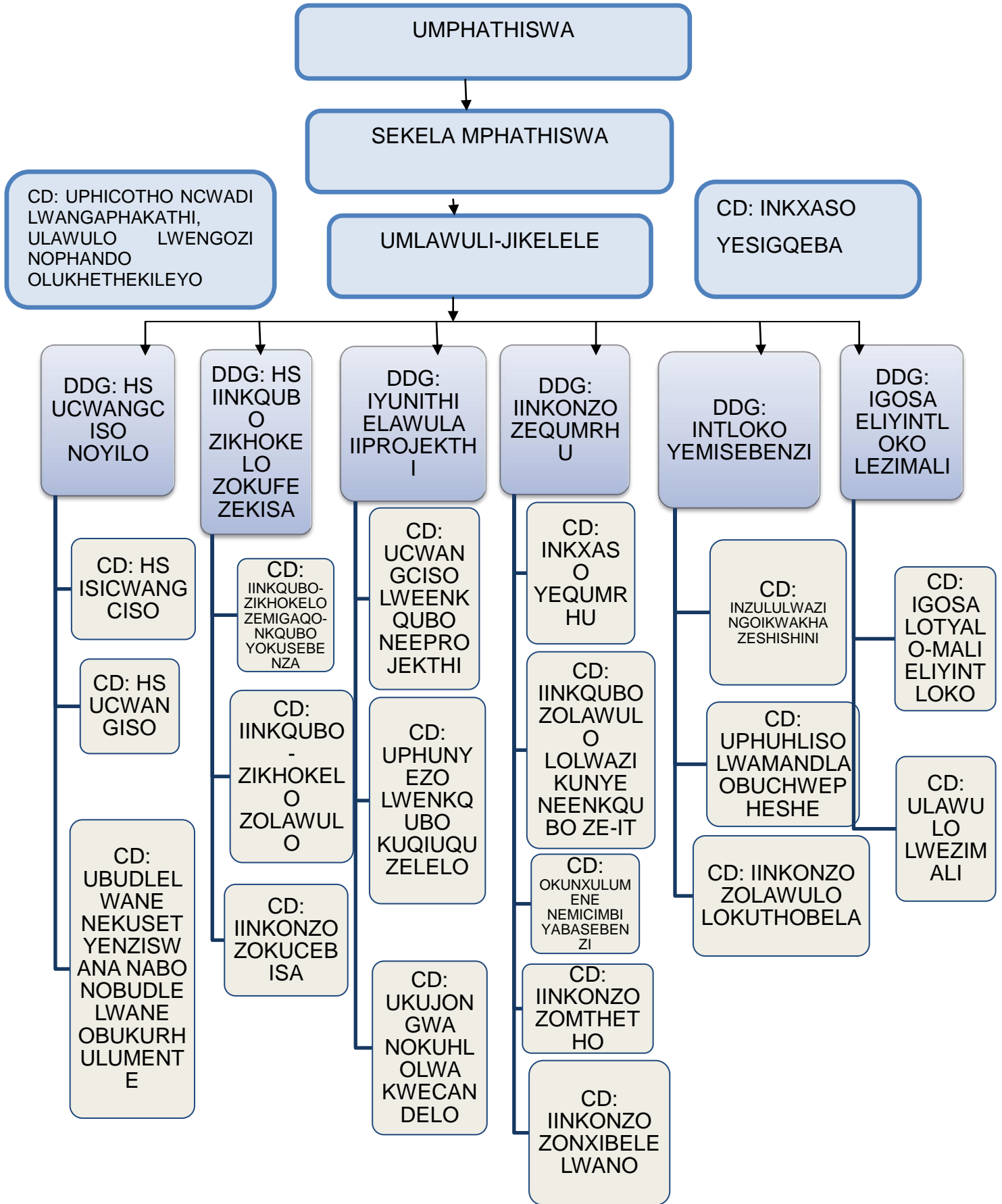
7.1.2. IMISHINI: Ukuququzelela ukudalwa kweendawo zokuhlaliswa kwabantu ezizinzileyo kunye nomgangatho ophucukileyo wobomi bemizi.

7.1.3. IINQOBO EZISEMGANGATHWENI

Iinqobo ezisemgangathweni ezingundoqo ezikhokela kunye nezilawula isebe zisekelwe kuMgaqo-siseko kunye nemithetho exhasayo kwaye ziquka:

- Ukuthatha uxanduva
- Ubulungisa nolingano
- Ukhetho, umgangatho nofikelelo
- Uzinzo
- Ukuveza izinto ezintsha
- Imithetho-siseko yeBatho Pele

7.2. UKWAKHIWA KWEQUMRHU LESEBE



7.3. IINKONZO EZINIKWA LISEBE

ISebe okungundoqo:

- Liseka kwaye ligcine umgaqo-nkqubo kunye nenkqubo-sikhokelo yomthetho efunekayo ekuququzelelweni kwenjongo yeendawo zokuhlala abantu ezizinzileyo nezihlanganisiweyo engqinelana nenjongo karhulumente kunye negunya lesebe; kunye
- Nokququzelela ukwaba ngokulinganayo kolwabiwo lonyaka kumaphondo kunye noomasipala kwiindawo zokuhlaliswa kwabantu, ukuphuhlisa kwezakhiwo kunye nokufunyanwa komhlaba.

Ukongeza kwindima edlalwa ngamaphondo kunye noomasipala ngokuphathelene neendawo zokuhlaliswa kwabantu, la maziko esizwe alandelayo asekiwe ukuze aququzelele iimfuno zecandelo ezinxululeme neendawo zokuhlaliswa kwabantu:

Amaziko:	Iinkonzo:	Iiklayenti:	Fumana ulwazi kwi:
Bhodi yeMicimbi yee-Arhente zeziNdlu (Estate Agency Affairs Board) (EAAB)	<ul style="list-style-type: none"> • Ukulawula, ukulungisa nokukhuthaza umgangatho wokuziphatha -wee-arhente zezindlu ngokuphathelene nomdla woluntu; • Ukukhupha izitifiketi zengxowa-mali yohlobo oluthile lwe-inshurensi (fidelity) kubafaki zicelo abafanelekileyo; • Ukumisela umgangatho woqeqesho lwee-arhente zezindlu; • Ukuphanda izikhalazo ezibhekiselwe kwii-rhente zezindlu kunye nokumisela iinkqubo zoluleko kwezo arhente zezindlu apho kufunekayo; kunye • Nokulawula nokuphatha ingxowa-mali ye-inshurensi ethile yee-arhente zezindlu. 	Abaxhasi bezezindlu kunye nee-arhente zezindlu.	Ii-ofisi ze-DHS, EAAB.
INkonzo yoMmeli weziKim zoluNtu (Community Schemes Ombud Service) (CSOS)	<ul style="list-style-type: none"> • Ukunika inkonzo yokusonjululwa lwezikhalazo kwizikim zoluntu; • Ukunika uqeqesho kubaxolelanisi, abagwebi kunye nabanye abasebenzi beseva; • Ukulawulo, ukuhlola kunye nokuphatha umgangatho wawo onke amaxwebhu olawulo lwezikim; kunye • Nokugcina, ukulondoloza nokunika ufikelelo loluntu kumaxwebhu olawulo lwezikim. 	Amaqumrhu ezikim zoluntu, Abanini kunye nabahlali beeyunithi zezikim zoluntu.	I-DHS, ii-ofisi ze-CSOS.

Amaziko:	linkonzo:	liklayenti:	Fumana ulwazi kwi:
I-Arhente yoPhuhliso lweziNdlu (Housing Development Agency) (HDA)	<ul style="list-style-type: none"> • Ukuchonga, ukufumana, ukubamba, ukuphuhlisa kunye nokukhulula umhlaba kunye nezakhiwo zophuhliso lwezindlu neendawo zokuhlala abantu ezikwindawo entle. • Ukubonelela ngenkxaso yolawulo lweprojekthi kunye neenkonziso zophuhliso lwezindlu. 	AbaXhasi bezeziNdlu, abaPhuhlisi kunye namaqumrhu karhulumente (oomasipala kunye nabambhaxa).	I-DHS, PDHS, OoMasipala, ii-ofisi ze-HDA.
IBhunga loBhaliso lwaBakhi beziNdlu leSizwe (National Home Builders Registration Council) (NHBRC)	<ul style="list-style-type: none"> • Ukulawula imo enmgoqngwe ukwakhiwa kwezindlu ngokubhaliswa kwezindlu kunye neenkqubo zokubhaliswa kwezindlu; • Ukukhusela abaxhasi bezindlu ngeziphene kwizakhiwo ngoholo lwezakhiwo kunye nolawulo loqiniseko lwerizevu, • Ukukhuthaza ubuchwepheshe obutsha bokwakha izindlu; kunye • Nokumisela imigangatho yokwakhiwa kwezindlu kunye nokuphucula ukuba nako kwabakhi bezindlu ngoqeqesho. 	Abaxhasi bezezindlu kunye nabakhi bezindlu.	DHS, PDHS, Oomasipala, ii-ofisi ze-NHBRC.
I-Arhente yoKwakha kunye neziNdlu zaseziDolophini yeSizwe (National Urban Reconstruction and Housing Agency) (NURCHA)	<ul style="list-style-type: none"> • Ukubonelela ngenkxaso yokuvala isikhewu kubakhi abancinane, abaphakathi kunye nabazinzileyo abakha izindlu zemali encinane kunye nephakathi, enzinxulumene nezibonelelo kunye nezakhiwo zoluntu; kunye • Nokunika inkqubo kunye neenkonziso zolawulo lwenkxaso. 	AbeeKontraki kunye naBakhi.	I-DHS, PDHS, OoMasipala, ii-ofisi ze-NURCHA.
IQumrhu leNkxaso yeziNdlu leSizwe (National Housing Finance Corporation) [NHFC]	<ul style="list-style-type: none"> • Ukubonelela ngezisombululo zemali eziveza okutsha nezifikelelekayo zenkxaso yezindlu kwimarike enengeniso esezantsi ukuya kwephakathi. • I-NHFC inika ezi nkonziso zilandelayo: • Iimali o-mboleko zethuba lengqesho zabucala, • Izibonelelo zeNgqesho yeziNdlu zasekuHlalani, 	Abarhola imali encinane, amaziko ezindlu azinzileyo, amaziko ezindlu asekuhlaleni, abakhi, abameli borhwebo abangabhankiyo kunye nebhanki eziboleka imizi ehluphekayo.	I-DHS, PDHS, oomasipala; li-ofisi ze-NHFC.

Amaziko:	linkonzo:	liklayenti:	Fumana ulwazi kwi:
	<ul style="list-style-type: none"> • Ukunika inkxaso abakhi • Izibonelelo zokunyuswa kwezindlu zewholiseyile • Izibonelelo zobunini khaya zewholiseyile, • ULawulo lweNkqubo yeNkxaso yomNtu eDityaniswe kwiMali (Administration of the Finance Linked Individual Subsidy Programme) (FLISP) 		
INGxowa-mali yeMali-Mboleko yeziNdlu yaseMaphandleni (Rural Housing Loan Fund) (RHFL)	<ul style="list-style-type: none"> • Ukuxhobisa imizu engengeniso esezantsi kwimimandla yasemaphandleni ukuba ifikelele kwikhredithi yezindlu. • Isebenza njengomboleki wewholiseyile kwaye yiloo nto ifumana igunya layo ngokunika iimali-mboleko ngabameli borhwebo kwimarike ejolise kuyo ukuba isetyenziselwe iinjongo zokonyusa ezezindlu. 	Abameli borhwebo abangabhankiyo	I-DHS, PDHS, oMasipala, ii-ofisi ze-RHFL.
UGunyaziwe oLawula iziNdlu zasekuHlaleneni (Social Housing Regulatory Authority) (SHRA)	<ul style="list-style-type: none"> • Ukulawula icandelo lezindlu lasekuhlaleni loMzantsi Afrika; • Ukuvunywa, ulawulo nokukhuthswa kotyalo-mali lweziko kunye neenkxaso eziyinkunzi (eyaziwa ngokuba yiNkxaso yokuLungisa ngokuTsha iNkunzi kunye neNkxaso yoTyalo-mali yeZiko). 	AmaZiko eziNdlu asekuHlaleneni, abakhi babucala.	DHS, PDHS, OoMasipala, ii-ofisi ze-SHRA.

7.4. IINKQUBO ZESEBE

ICandelo loku-1: Ulawulo	<p>Injongo: Ukunika ubunkokheli besicwangciso, ukonganyelwa kolawulo kunye nenkxaso eyimfuneko kunye nokukhuthaza isebe kunye nee-arhente ezithobelayo nezisebenza kakuhle.</p> <p>Injongo zeSicwangciso</p> <ul style="list-style-type: none"> • Ukunika ubunkokheli besicwangciso, ulawulo kunye nokongamela okusebenzayo: i-Ofisi yoMphathiswa ibonelela ngobunkokheli nomgaqo-nkqubo kwisebe leeNdawo zokuHlala; • Ulawulo lwezimali kunye nolawulo lwangaphakathi lusebenze: I-Ofisi yoMlawuli Jikelele inika ulawulo xa lulonke kwisebe leeNdawo zokuHlaliswa kwabaNtu kwaye lilawula uphicotho-ncwadi lwangaphakathi lwengozi kunye neenkonziso ezikhethekileyo zophando; • Inkxaso yoLawulo kunye neyeMisebenzi, iinkqubo (imicimbi yabasebenzi, unxibelelwano, uphicotho-ncwadi lwangaphakathi, inkxaso yequmrhu kunye neenkonziso zomthetho) ezisebenzayo nezinempumelelo ekukhuthazeni umbutho omanyene ngaphakathi kwaye
---------------------------------	---

	<p>ozinzileyo: iiNkonzo zeQumrhu zibonelela ngenkxaso ngokoLawulo lweMicimbi yabaSebenzi, ubuChwepheshe boLwazi noNxibelelwano (Information and Communication Technology) (ICT), iiNkonzo zomThetho, iiNkonzo zoNxibelelwano kunye noCholacholo Ndaba kunye neNkxaso yeQumrhu.</p>
<p>ICandelo lesi-2: ISicwangciso, uMgaqo-nkqubo, noYilo lweSebe leeNdawo zokuHlaliswa kwabaNtu.</p>	<p>Injongo: Lilawula ukuphuhlisa kwemigaqo-nkqubo nezicwangciso zeSebe leeNdawo zokuHlaliswa kwabaNtu ukuba liphuhle kwaye liphumeze isisombululo solawulo esimanyeneyo, esithelekelelwayo nesingafihliyo esiququzelela ufikelelo olulula ekulungiseni iinkqubo-zikhokelo zonikezo ezingonelanga zesebe leendawo zokuhlaliswa kwabantu.</p> <p>INjongo zeSicwangciso</p> <ul style="list-style-type: none"> • Ukuphuhlisa nokujonga kwakhona imigaqo-nkqubo neenkqubo zeeNdawo zokuHlaliswa kwabaNtu ukukhuthaza nokuqinisekisa ufikelelo lwabo bonke kwizindlu ezoneleyo kunye nomgangatho ophuculiweyo lwemo engqongileyo yokuhlala kunye nolungelelwaniso olunempumelelo lwezigqibo zotyalo-mali lwezithuba. • Ukujonga kwakhona, ukungqinelanisa kunye nolungelelwaniso kweSicwangciso seSebe leeNdawo zokuHlaliswa kwabaNtu phakathi kwamacandelo amathathu karhulumente ukukhuthaza ulungelelwaniso olusebenzayo lwezigqibo zotyalo-mali lwezithuba. • Ukuququzelela uphuhliso lweenkqubo-zikhokelo zocwangciso lwesebe leendawo zokuhlaliswa kwabantu; • IziCwangciso zoPhuhliso, zokutsala abo kusetyenziswana nabo kunye nokunika ulawulo lwequmrhu phakathi kwamacandelo karhulumente kunye necandelo. • Licebisa ekuhlanganisweni kweprojekthi, ukuqinisekiswa kobulunga kwaye libonelela ngoncedo kwiKomiti yePotifoliyo. • Ukuphuhlisa kwezicwangciso ze-HS, uphando nohlolo lweenkqubo zeziphumo eziphuculiweyo zesebe leendawo zokuhlaliswa kwabantu.
<p>ICandelo lesi-3: IYunithi yoLawulo lweNkqubo</p>	<p>Injongo: Ukwakha, ukongamela, inkxaso nokujonga ukukwazi kwecandelo leziko namandla okufezekisa iinkqubo kunye neprojekthi zesebe leendawo zokuhlaliswa kwabantu.</p> <p>INjongo zeSicwangciso</p> <ul style="list-style-type: none"> • Ukwakha nokuqinisekisa ukuba nako kweziko kunye namandla okwenza kunye nokufezekisa isebe leendawo zokuhlaliswa kwabantu elitshintshiweyo kunye nojoliso lwezithuba olungcono • Ukuphuhlisa amanyathelo angqingqwa kunye nokuphumeza isebe leendawo zokuhlaliswa kwabantu elizinzileyo, ukunika ufikelelo kwizindlu ezaneleyo kwimo engqongileyo ephuculiweyo yabo bonke • Ukuphumeza iiprojekthi eziqinisekisa ukuhlanganiswa kwezithuba, ezasekuhlaleni kunye noqoqosho • Ukujonga nokuhlola ukwenziwa kunye nofezekiso lweprojekthi kunye neenkqubo zesebe leeNdawo zokuHlaliswa kwabaNtu ukuhlola kunye nokunika ingxelo ngobubanzi bofikelelo kwizindlu ezaneleyo kwizimo ezingqongileyo zokuhlala eziphuculiweyo
<p>ICandelo lesi-4: INKxaso yoPhuhliso lweziNdlu</p>	<p>Injongo: Ukunika inkxaso mali kufezekiso lweenkqubo zesebe leendawo zokuhlaliswa kwabantu ngokungqinelana nemigaqo-nkqubo, uyilo nezicwangciso ezivunyiweyo</p> <p>INjongo zeSicwangciso</p>

	<ul style="list-style-type: none"> • Ukulawula iinkxaso mali zezindlu kunye nesebe leendawo zokuhlaliswa kwabantu (USDG/HSDG) ngokungqinelana neenkqubo-zikhokelo zenkxaso mali ezivunyiweyo; • Ukongamela uyilo lweeprojekthi kunye neenkqubo zesicwangciso sesebe leendawo zokuhlaliswa kwabantu; • Ukulawula uphuhliso olukhawulezayo oluqwalaselweyo kwakhona lwezimali kwizindlu; • Ukongamela kunye nokuququzelela ukuphunyezwa kweeprojekthi kunye neenkqubo zeSebe leNdawo zokuHlaliswa kwabaNtu; • Ukulawula ukujongwa, ukuhlolwa kunye nohlolo lweempembelelo zeeprojekthi, imigaqo-nkqubo neenkqubo zesebe leendawo zokuhlaliswa kwabantu.
ICandelo lesi-5: I-Ofisi yeGosa eliyiNtloko leziMali	<p>Injongo: Ukongamela ulungiselelo lweenkonzo zolawulo lwemali.</p> <p>INjongo zeSicwangciso</p> <ul style="list-style-type: none"> • Ukulawula kunye nokunika iinkonzo zenkxaso yemali; • Ukunika iinkonzo zolawulo lohlahlo lwabiwo-mali kunye neenkxaso mali xa zizonke; • Ukulawula kunye nokuhlenganisa imiThombo yecandelo.
ICandelo lesi-6: I-Ofisi yeGosa eliyiNtloko leMisebenzi	<p>Injongo: Ukongamela ulungiselelo lwemisebenzi yokusebenza yeendawo zokuhlaliswa kwabantu.</p> <p>INjongo zeSicwangciso</p> <ul style="list-style-type: none"> • Ukongamela ukwandiswa kwemisebenzi yeendawo zokuhlaliswa kwabantu ngeenkonzo zamashishini eenzululwazi ngokwakha ezisebenzayo; • Ukulawula uphuhliso lwamandla obuchwepheshe kwicandelo leendawo zokuhlaliswa kwabantu; • Ukuqinisekisa ukuthotyelwa kolawulo kwisebe kunye necandelo; • Ukunika ulawulo lokongamela kwamaziko ezindlu, kuquka ukuhlola, ukuhlalutya nokuxela ekusebenzeni kwizimali kunye nokungekho kwizimali kunye nolawulo lwequmrhu. .

8. UFIKELELO KWIIREKHODI EZIGCINWE LISEBE

Iirekhodi ezithile, kukhutshelwa ngaphandle iirekhodi ezifumaneka ngaphandle kwesicelo, zifumaneka ngaphandle kokuba wenze isicelo sofikelelo ngokwe-PAIA. Ezinye iirekhodi ezigcinwe yi-DHS kufuneka zixelwe kwi-DIO ngokweenkqubo ezixelwe kwiCandelo le-11 nele-18 le-PAIA.

8.1. IINDIDI ZEEREKHODI EZIGCINWE LISEBE

Iirekhodi ze-DHS zilawulwa ngokungqinelana namagatya omThetho wooVimba beSizwe boMzantsi Afrika, 1996 (umThetho oyiNombolo yama-43 ka-1996). Iindidi zeerekhodi ngezantsi zinikwe ngokungqinelana noyilo lwefayile ye-DH oluvunyiweyo. Ezinye zeerekhodi ezidweliswe kwiindidi ezingezantsi zinokucelwa ngokusesikweni, kodwa ufikelelo kwiinxenye zezi rekhodi okanye kwirekhodi epheleleyo lunokwaliwa ngokusekelwe kumagatya e-PAIA njengoko kuxeliwe kumacandelo elama-33 ukuya kwelama-45.

**Ezifumaneka ngaphandle kwesicelo: lirekhodi ekunokufikelwa kuzo ngaphandle kokuba umntu acele ufikelelo ngokomThetho njengoko kuxeliwe kwicandelo le-15(1)(a) le-PAIA.*

**IiRekhodi EziFumaneka ngeSicelo: lirekhodi ekunokufikelelwa kuzo ngokulandela iinkqubo njengoko kuxeliwe kwi-PAIA iCandelo le-11 nele-18; ufikelelo kwezi rekhodi lunokwaliwa ngokusekelwe kumacandelo elama-33 kunye nelama-45 lomThetho.*

Inombolo	UMxholo	Udidi	Ezifumaneka ngaphandle kwesicelo*	Ezifumaneka ngesicelo*
8.1.1.	INKQUBO-SIKHOKELO YOMTHETHO NELAWULAYO	UmThetho weSebe lezokuHlaliswa kwabaNtu (imiThetho eYilwayo/imiThetho/iMimiselo neziBophelelo zeHlabathi).	Ewe	Hayi
		Utshintsho lwecandelo (uyilo, izincomo, ulawulo lwasekuhlaleni nolotshintsho).	Hayi	Ewe
8.1.2.	UQUQUZELELO KUNYE NOLAWULO	Imigaqo-nkqubo yangaphakathi.	Hayi	Ewe
		Ulawulo lwengozi.	Hayi	Ewe
		INkqubo-sikhokelo yoMgaqo-nkqubo elwa uRhwaphilizo nobuQhetseba.	Hayi	Ewe
		Uphicotho-ncwadi lwangaphakathi.	Hayi	Ewe
		Amanyathelo kunye neengxelo zolawulo lwentlekele.	Hayi	Ewe
		IiNgxelo zoNyaka zeSebe leeNdawo zokuHlaliswa kwabaNtu; iNkqubo-sikhokelo yeXesha eliPhakathi yeSebe leeNdawo zokuHlaliswa kwabaNtu (Human Settlements Medium Term Strategic Framework) (MTSF 2014-2019; amaYilo eziCwangciso, amaYilo okuSebenza oNyaka.	Ewe	Hayi
		Imicimbi yempilo nokhuseleko emsebenzini	Hayi	Ewe
8.1.3.	OKUNXULUMENE NEMICIMBI YABASEBENZI ABAPHATHI	Ulawulo lweposi, imicimbi yokuseka neyolawulo.	Hayi	Ewe
		Izithuba, ingqesho kunye nokutshintshwa.	Hayi	Ewe
		Iirekhodi zabasebenzi/iiFayile zeMpilo nokuPhila kwabaSebenzi	Hayi	Ewe
		Ukugcinwa kwabasebenzi.	Hayi	Ewe
		Ukuphuliswa kwabasebenzi (uyilo, ukuzibandakanya, izakhono kunye neenkqubo zokufunda, inkqubo yokufunda, iibhasari, imali yokufunda, ubudlelane neengxelo).	Hayi	Ewe

Inombolo	UMxholo	Udidi	Ezifumaneka ngaphandle kwesicelo*	Ezifumaneka ngesicelo*
		Uyilo, ukusebenzisa, ulawulo nohlolo (uyilo lwe-HR, izibhengezo, ukusetyenziswa kwekhefu, ixesha elongezelelweyo, imicimbi yasekuhlaleni, imibutho kunye nokuhlangana, kunye nokuphelisa iinkonzo kunye nokuhamba).	Hayi	Ewe
		Ulawulo lokusebenza nophuhliso.	Hayi	Ewe
		Imicimbi enxulumene nemisebenzi kunye nomsebenzi	Hayi	Ewe
		Uyilo lokutshintshwa kwequmrhu kunye neengxelo (uLingano kwiNgqesho; iBatho Pele; ULawulo loTshintsho, iMpilo nokuPhila koMsebenzi)	Hayi	Ewe
		Utshintsho lombutho (uyilo, izincomo, ulawulo lwasekuhlaleni nolotshintsho).	Hayi	Ewe
		Ukunikezela ngamandla/igunya.	Hayi	Ewe
		Imicimbi yokuseka. (iSakhiwo esiNcinane)	Hayi	Ewe
		Imicimbi yokuseka. (iSakhiwo esiNcinane)	Ewe	Hayi
8.1.4.	IMICIMBI YEZIMALI	IiNgxelo zeNkqubo yoCwangciso - mali esiSiseko (Basic Accounting System) (BAS)	Hayi	Ewe
		Uhlahlolwabiwo-mali (Ingqikelelo yeNkcitho yeSizwe yeSebe leeNdawo zokuHlaliswa kwabaNtu).	Ewe	Hayi
		Ukuthobela kwizimali (uNondyebo, uMphicothi-Ncwadi Jikelele, ukuxela kunye neengxelo). -	Ewe	Hayi
		Uphicotho-ncwadi lwezimali.	Ewe	Hayi
		Amabango.(Iintlawulo phakathi kurhulumente)	Ewe	Hayi
		INkqubo yabanamaTyala.	Hayi	Ewe
		Ulawulo lwenkxaso-mali kunye nemali enemiqathango (ulwabiwo, ukudluliselwa kunye nokunika abanye igunya, uhlolo nohlalutyo, ilahleko neengxelo).	Ewe	Hayi
		Imicimbi yebhanki.	Hayi	Ewe
		Ukungangqinelani kwizimali.	Ewe	Hayi

Inombolo	UMxholo	Udidi	Ezifumaneka ngaphandle kwesicelo*	Ezifumaneka ngesicelo*
		Ukungqinelaniswa kwee-akhawunti.	Hayi	Ewe
		Uncedo lwezimali (iminikelo neenkxaso-mali).	Ewe	Hayi
		li-invoyisi, iziteyitimenti kunye neentlawulo.	Hayi	Ewe
		lirisiti ezishicilelweyo.	Hayi	Ewe
		lirekhodi zocwangciso-mali ezongeziweyo.	Hayi	Ewe
		litransekshini zeejenali.	Hayi	Ewe
		Ukuhlolwa kwenkqubo yezimali.	Hayi	Ewe
		Amaphetshana entlawulo.	Hayi	Ewe
		lifom zesixa sesibophelelo setyala, iivawutsha neetsheki zoqiniseko.	Hayi	Ewe
		lirejista (kuqukwa imivuzo, iinvoyisi neentlawulo).	Hayi	Ewe
8.1.5.	ULAWULO LOKUNGENA NOKUPHUMA KWEMPAHLA NEENKONZO	Iziteyitimenti zemali.	Ewe	Hayi
		Imicimbi yolawulo lwelahleko.	Hayi	Ewe
		Amanqakwana okusebenza (iNkxaso-mali yophuhliso ye-HS (HS development grant) (HSDG)	Hayi	Ewe
		UkuFuna nokuFunyanwa (iikoteyishini, amabango nokufumana).	Hayi	Ewe
		liBhidi (Iziphakamiso, ubalulo, upapasho, ulwabiwo neekomiti.	Hayi	Ewe
		Izicwangciso zokuFumana nokuFuna.	Hayi	Ewe
		lirejista (kuqukwa iibhidi, iirekhodi zabaniki ziinkonzo okanye impahla, irejista yeentalwulo, amaphetshana olawulo lokuthathwa kwesitokhwe, i-invoyisi, i-asethi kunye nempahla).		
		li-odolo kunye neentlawulo (iinkqubo, ii-invoyisi, ii-SLA, ukuthathwa kwesitokhwe sempahla (amayilo), izifunyanwayo).	Hayi	Ewe
		ULawulo lwee-Asethi (ulwabiwo, ulondolozo, ukuhanjiswa, uhlobo neengxelo, amaphepha alawula ukuthathwa kwesitokhwe, ii-asethi kunye nempahla).	Hayi	Ewe

Inombolo	UMxholo	Udidi	Ezifumaneka ngaphandle kwesicelo*	Ezifumaneka ngesicelo*
8.1.6.	IINKONZO ZOKUHAMBA NEZOTHUTHO	Ihambo zasekhaya nokuhamba.	Hayi	Ewe
		Isithuthi (esiqeshiweyo kunye nesikarhulumente).	Hayi	Ewe
		Amaphetshana anolwazi ngeenkono.	Hayi	Ewe
8.1.7.	ULAWULO LWEZIBONELELO	Izakhiwo, imiHlaba neePropati (ukuchongwa kweemfuuno noHlaluty, ucebo noYilo, ukufunyanwa kunye neNgqesho yee-ofisi kunye neendawo zokuhlala ezisemthethweni, ulwabiwo, ulondolozo nokubekwa ecaleni).	Hayi	Ewe
		Izixhobo kunye nezinye izibonelelo (into ehlelwa ngokuba "ezinye izibonelelo" (ukufakwa, ukulungiswa nokulondolozo).	Hayi	Ewe
		Ukujongwa kunye nokulondolozwa kwamandla ombane (Ucwangciso, ulawulo, uhlobo kunye neengxelo).	Hayi	Ewe
		ISivumelwano seNqanaba leNkonzo, uLondolozo, ukuJonga nokuHlola (iiNkonzo zoMbane, ukuTywina, uLawulo lweziTshabalalisi, iiNkonzo zoCoceko nezokuCoca).	Hayi	Ewe
		UkuKhuthazwa koFikelelo kuLwazi (iIngxelo zeCandelo lama-32; iNcwadi ye-PAIA, uluhlu lweCandelo le-15).	Ewe	Hayi
8.1.8.	IINKONZO ZOLWAZI	Ulawulo lolwazi.	Hayi	Ewe
		Iincwadi ze-PAIA	Ewe	Hayi
		Ulawulo lwethala lencwadi.	Hayi	Ewe
		Ulawulo lweRekhodi (UYilo lweFayile, ishedyuli yeerekhodi ngaphandle kweefayile zeMbalelwano, utshintsho, ukuhanjiswa, iingxelo kunye neerejista zerejistri).	Hayi	Ewe
		Ulawulo lokhuselo	Hayi	Ewe
		Imicimbi yempilo nokhuseleko emsebenzini	Hayi	Ewe
		Izicelo eziNgqongwe i-HSS (iNkqubo yeNkxaso yeziNdlu, iRejista yeeMfuno zeziNdlu yeSizwe kunye noVimba weNkcukacha weNkxaso yeziNdlu)	Hayi	Ewe

Inombolo	UMxholo	Udidi	Ezifumaneka ngaphandle kwesicelo*	Ezifumanek a ngesicelo*
		Ulondolozo, iiNkonzo zeNkxaso noQeqesho ezinikwa amaSebe eeNdawo zokuHlaliswa kwabaNtu ephondo		
		Iinkonzo zokuPhuhlisa nokuXhaswa kwezaKhiwo kwiSebe leSizwe leeNdawo zokuHlaliswa kwabaNtu	Hayi	Ewe
		IINKqubo zoLwazi neziCelo ezixhasa inkqubo kunye neenjongo zokusebenza zeSebe leeNdawo zokuHlaliswa kwabaNtu lweSizwe.	Hayi	Ewe
8.1.9.	UNXIBELELWANO	Isicwangciso sonxibelelwano.	Hayi	Ewe
		Ilogo/umfuziselo weSebe.	Hayi	Ewe
		Iziko lomnxeba elinceda abaxhasi kunye nemicimbi yomnxeba kamongameli.	Hayi	Ewe
		Ukukhutshwa kweendaba ziye kubachola-choli bazo.	Ewe	Hayi
		IiProfayile zikaGunyaziwe weSigqeba	Ewe	Hayi
		ImiSitho, amaphulo, ukwaziswa kunye neenkqubo zokupapasha (kuqukwa iintetho zikaMphathiswa kunye noSekela Mphathiswa kunye neefoto.	Ewe	Hayi
		UShicilelo lweSebe; iiBrosha; iiNcwadana zabaSebenzi, iiMagazini neePosta.	Ewe	Hayi
		Amathuba oqoqosho adalwe liSebe leeNdawo zokuHlaliswa kwabaNtu (ngeelwimi ezili-11 ezisemthethweni).	Ewe	Hayi
		IiNkqubo kunye neeNkxaso zeeNdawo zokuHlaliswa kwabaNtu (iilwimi ezisemthethweni ezili-11).	Ewe	Hayi
		Incwadi yeminyaka engama-20 yeeNdawo zokuHlaliswa kwabaNtu.	Ewe	Hayi
		UHlolo lwezeeNdaba lwe-DHS (likopi zeziCatshulwa zeeNdaba zeentengiso zezeendaba/iiKopi zezintlu zikamabonakude BNG ezisasazwa ku-SABC 2).	Ewe	Hayi
		Iphepha lengcaciso nkqubo kwezokuhlaliswa kwabantu.	Ewe	Hayi
		IziVumelwano zasekuHlalani kuPhuhliso lweSebe leeNdawo zokuHlaliswa kwabaNtu	Ewe	Hayi
		IDayari yeQumqu yeSebe leeNdawo zokuHlaliswa kwabaNtu	Ewe	Hayi
		Isikhokelo sokuba neNdlu eXhaswa nguRhulumente.	Ewe	Hayi

Inombolo	UMxholo	Udidi	Ezifumaneka ngaphandle kwesicelo*	Ezifumanek a ngesicelo*
8.1.10.	IINKONZO ZOMTHETHO	Ukuqeshwa kweengcali zomthetho.	Hayi	Ewe
		Nezimvo zomthetho.	Hayi	Ewe
		Amabango, ukuthinjwa nezibheno.	Hayi	Ewe
		Utshutshiso kuqukwa amaxwebhu okumangalelana ngokomthetho.	Hayi	Ewe
		likontraki, izivumelwano phakathi kwamaqela amabini okanye ngaphezulu kunye nezivumelwano zenqanaba lengqesho.	Hayi	Ewe
		UmThetho weSebe lezokuHlaliswa kwabaNtu (imiThetho eYilwayo/imiThetho/iMimiselo neziBophelelo zeHlabathi]	Ewe	Hayi
8.1.11.	IINTLANGANISO, UKUZA KUNYE NOKUSINGATHA IINDIBANO	Ulawulo, iqumrhu lephondo kunye neentlanganiso zequmrhu zecandelo (kuqukwa, ukonyulwa kwabantu abakwiphaneli abacebisa umphathiswa, ulungiselelo, ii-ajenda, imizuzu kunye neengxelo).	Hayi	Ewe
		IRekhodi eza kuSetyenziswa yeKhabhinethi	Hayi	Ewe
		IKomiti yePotifoliyo kunye nemibuzo/iimpendulo.	Hayi	Ewe
		IiMpendulo eziVunyiweyo ePalamente.	Ewe	Hayi
8.1.12.	UKUJONGA UHLOLO KUNYE NOHLOLO LWEEMPEMBELELO	Ukujonga uhlolo kunye nemicimbi yenkqubo yohlolo lweempembelelo.	Hayi	Ewe
		Uhlolo, uhlolo lweempembelelo kunye neengxelo zokujonga (luquka iimpembelelo, ukusebenza, ukujongwa kweprojekthi kunye nophicotho lokuhlala kwabaxhamli).	Hayi	Ewe
		UHlolo lweempembelelo zeNkqubo yeziNdlu zasemaPhandleni.	Ewe	Hayi
		UkuHlola ukusebenza kweeNkqubo zeziNdlu zasekuHlaleneni nezeNgqesho.	Ewe	Hayi
		Ukulinganisa impumelelo kuphuhliso lweeNdawo zokuHlala: uphononongo lohlolo lweempembelelo ekulungisweni kwenkqubo yamatyotyombe kwiiprojekthi ezikhethiweyo eMzantsi Afrika.	Ewe	Hayi
		UkuLungiswa kwamaTyotyombe.	Ewe	Hayi
		UkuJongwa ngokuKhawuleza kweSiphumo 8 Uluvo 1.	Hayi	Ewe
		Ulwazi lwendawo kunye nolungelulo olwendawo.	Hayi	Ewe

Inombolo	UMxholo	Udidi	Ezifumaneka ngaphandle kwesicelo*	Ezifumanek a ngesicelo*
		Ukufunyanwa nokulawulwa kwedatha (amatyotyombe, amanani okunikeza, ukulungisa, ukunikeza ngokweprojekthi, iiprojekthi ezivaliweyo).	Ewe	Hayi
		UkuJonga, uHolo noHlolo lweeMpembelelo zokusiNgqongileyo (Monitoring, Evaluation and Impact Assessment) (MEIA) UMgaqo-nkqubo kunye neNkqubo-sikhokelo yokuPhumeza kwiCandelo leeNdawo zokuHlaliswa kwabaNtu.	Ewe	Hayi
		UkuJonga, uHolo noHlolo lweeMpembelelo zokusiNgqongileyo 2013/14 to 2018/19: UMgaqo-nkqubo kunye neNkqubo-sikhokelo yokuPhumeza kwiCandelo leeNdawo zokuHlaliswa kwabaNtu	Ewe	Hayi
		IsiCwangciso sokuPhumeza kokusiNgqongileyo: : ISebe leeNdawo zokuHlaliswa kwabaNtu: 2015 - 2020	Ewe	Hayi
8.1.13.	UPHUHLISO LOMGAQO-NKQUBO, UNCEDO NOPHANDO	IKhowudi yeziNdlu yeSizwe 2009.	Ewe	Hayi
		UYilo oluBanzi lokuDalwa kweeNdawo zokuHlala abaNtu eziziNzileyo luka-2004.	Ewe	Hayi
		INkqubo yeNkxaso yomNtu eDityaniswe kwiMali (Finance Linked Individual Subsidy Programme) (uMgaqo-nkqubo we-FLISP).	Ewe	Hayi
		INkqubo-sikhokelo yabaseTyhini noluTsha (INkqubo-sikhokelo yoMgaqo-nkqubo).	Ewe	Hayi
		Iingxelo kwiiNdawo zokuHlaliswa kwabaNtu okusinGqongileyo noHlalutyo (imiba yoqoqosho neeMarike).	Ewe	Hayi
		UMgaqo-nkqubo weNkqubo yeziNdlu zabaNtu.	Ewe	Hayi
		Uphando (luquka iingxelo).	Hayi	Ewe
8.1.14.	UYILO LWECANDELO LEZOKUHLALISWA KWABANTU	Uyilo lwesizwe (amayilo ophuhliso eminyaka emiNinzi eziNdlu eSizwe, amayilo ophuhliso oluHlanganisiweyo eeNdawo zokuHlalisa abaNtu kunye namaYilo oshishino eNkxaso engenamiQathango).	Hayi	Ewe

Inombolo	UMxholo	Udidi	Ezifumaneka ngaphandle kwesicelo*	Ezifumaneka ngesicelo*
		Uyilo lwephondo (luquka iziCwangciso zoPhuhliso lweminyaka emiNinzi lweziNdlu lwePhondo, amaYilo oShishino, iziXhobo kunye neeNgxelo).	Hayi	Ewe
		Uyilo lukamasipala (luquka uyilo kunye neenkqubo zophuhliso ezihlanganisiweyo, izicwangciso zeNkxaso yoPhuhliso lweeNdawo zokuHlaliswa kwabaNtu eziDolophini, iziCwangciso zokuSebenza kwiMo neNgqongileyo eyaKhiweyo, imicimbi yokusekwa kweelokishi, ukuvunywa kunye neengxelo zikamasipala)	Hayi	Ewe
		Ukuququzelelwa kweprojekthi ezibalulekileyo ezixhaswa kwisizwe nakwiphondo.	Hayi	Ewe
8.1.15.	UKUPHUNYEZWA KWEPROJEKTHI, INKXASO KUNYE NOKUHLOLA	IiProjekthi ezivaliweyo.	Hayi	Ewe
		Ukulungiswa kweendawo ezihlala abantu ezingamatyotyombe (kuquka amayilo, ukuphunyezwa, ulungelelaniso nenkxaso).	Hayi	Ewe
		ISikhokelo seNkqubo yeProjekthi yeziNdlu	Ewe	Hayi
		Ukuyilwa kweprojekthi ezintsha ezingoonobangela	Hayi	Ewe
		Ukuququzelelwa kwesicwangciso seprojekthi zeSebe leeNdawo zokuHlaliswa kwabaNtu kwiidolophu/imimandla yemigodi.	Hayi	Ewe
8.1.16.	IINKQUBO ZOBULUNGISA NEZIBALULEKILEYO	Iingxelo zonyaka kwiipateni ezikhokelayo kwiimali-mboleko zezindlu.	Ewe	Hayi
		Imicimbi yobulungisa (amaziko ezimali).	Ewe	Hayi
		I-Ofisi yeNcwadana yencwadi yokuXela iNkqubo yokuPhathwa kweziKhalazo (iilwimi ezisi-8: isiNgesi; isiBhulu; isiZulu; Sepedi; Setswana; isiXhosa; Xitsonga neTshivenda).	Ewe	Hayi
		Iimali-mboleko zezindlu neebhondi.	Ewe	Hayi
8.1.17.	IINDAWO ZOKUHLLALA ABANTU IINKQUBO	Iinkqubo zengqesho kwiindawo zokuhlalisa abantu: iNgxelo yoPahndo ka-2007, INdawo yokuHlala yeNgqesho yamaGcisa eCandelo likaRhulumente kunye noHlolo lweeMpembelelo kunye nokuPhunyezwa kweNkqubo yeziNdlu.	Hayi	Ewe

Inombolo	UMxholo	Udidi	Ezifumaneka ngaphandle kwesicelo*	Ezifumaneka ngesicelo*
		Ukuphuhliswa kweprojekthi Zabucala kunye nezengqesho: INkqubo yeziNdlu yeSizwe kuLungiselelo lweNkonzo eziSisiseko kubaHlali ngaseMva eziYadini kunye neMimiselo yeziNdlu ekuHlalwa eMva kuzo eVunyiweyo yase-Gauteng.	Hayi	Ewe
		IziNdlu zasekuHlalani: umThetho weziNdlu ekuHlalani we-16 ka-2008, IziKhokelo zoMgaqo-nkqubo weziNdlu ekuHlalani kunye neMimiselo yeziNdlu zasekuHlalani.	Ewe	Hayi
		Amaziko anamagunya okugweba.	Hayi	Ewe
		Inkxaso yabaqeshileyo.	Hayi	Ewe
		Uhhluty, uHlolo, ukuJonga, ukuJonga kwaKhona, iiNgxelo neeNkcukacha maNani kwiiProjekthi kunye neeNkqubo zeNgqesho.	Hayi	Ewe
		Imicimbi yokuseka kumaziko kunye namaqumrhu ezindlu(imiThetho eyeNza kwenzeke yeZiko, uXwebhu oluMisela amaLungelo namaXanduva)	Hayi	Ewe
		Imicimbi yebhodi yeziko(Amagama amalungu ebhodi, ixesha lokubamba i-ofisi, IziVumelwano zabo kuseTyenziswana nabo, amaxwebhu eGunya, iTshatha yeBhodi kunye neSikowupu neMida yoMsebenzi, iiNgxelo zoHlolo zeBhodi, imivuzo)	Hayi	Ewe
		Izicwangciso/ingxelo yeziko	Hayi	Ewe
		(amaYilo eziCwangciso, iziCwangciso zokuSebenza zoNyaka)		
		Ukuhlolwa nokujongwa kwakhona kwamaziko.(lingxelo zeKota kunye neengxelo zoNyaka)	Hayi	Ewe
		Ungenelo (Ukuqeshwa kwabalawuli, izixiKhalazo neziSombululo).	Hayi	Ewe
		Uphando (luquka iiNgxelo)	Hayi	Ewe
		Ukuququzelelwa kweprojekthi ezibalulekileyo ezixhaswa kwisizwe nakwiphondo.	Hayi	Ewe

Inombolo	UMxholo	Udidi	Ezifumaneka ngaphandle kwesicelo*	Ezifumaneka a ngesicelo*
		INkqubo yokuHlalisa uluNtu (Community Residential Programme) (CRU).	Ewe	Hayi
		Ulwazi nodluliso lohlahlo lwabiwo-mali (Uhlahlo lwabiwo-mali lonyaka, ulwazi lwe-MTEF, ukudluliswa kolwaniwo lwenkxaso)	Hayi	Ewe
8.1.18.	UKUNXULUMANA KUNYE NOKUHLANGANA KWABANTU EKUSETYENZISWANA NABO	limanyano kunye neendibano (ziquka imicimbi enxulumene norhulumente, urhwebo iimanyano zamazwe ngamazwe nezamazwe amaninzi).	Hayi	Ewe
		AmaWonga eziNdlu ka-Govan Mbeki.	Ewe	Hayi
		Ukuxhaswa ngezimali kweprojekthi zesebe leendawo zokuhlaliswa kwabantu.	Hayi	Ewe
		INkqubo yeziNdlu zabaNtu (iquka amatyala amaDala, ukuVulwa kweprojekthi ze-PHP okuzayo, iNtsebenziswano kunye nemicimbi yokusonjululwa kweMbambano).	Hayi	Ewe
		UbuDlelwane bamaZwe eHlabathi (uKhenketho lokuFunda, iziVumelwano eziphakathi kwamaZwe amaBini).	Hayi	Ewe
		Iisemina, iindibano zeenkomfa kunye neentlanganiso zeengxoxo (kuqukwa amaphulo neentlanganiso zeengxoxo).	Ewe	Hayi
		Iinkqubo zokuqhelanisa nomgaqo-nkqubo (kuqukwa ukuphumeza kunye nokuhlanganyelana)	Hayi	Ewe
8.1.19.	UPHUHLISO LWEZAKHONO LWESEBE LEZOKUHLALISWA KWABANTU	Ukuxhamla kunye nokuxhobisa uluntu (kuqukwa ukuphunyezwa kunye nokuhlanganyelana, uhlolo lokujonga nokuvavanya).	Hayi	Ewe
		Ukwenziwa umsebenzi onobugcisa kwecandelo le-HS (kuquka uyilo lwamashishini, ukuvunywa kweziqinisekiso zokufunda, imicimbi kubaniki qeqesho kunye namaziko kunye nokulawulwa kwamaqumrhu emisebenzi yobugcisa ye-HS).	Hayi	Ewe
		Iimali zokufunda zeHS kunye neemali zokuncedisa (kuqukwa imigaqo-nkqubo yezicelo kunye nokujongwa nokuhlolwa kolwabiwo)	Hayi	Ewe
		Uphuhliso lwamandla eziko (kuqukwa uyilo lwamashishini, imicimbi enxulumene nolungelelwaniso, ukuphunyezwa nenkxaso yeenkqubo)	Hayi	Ewe

Inombolo	UMxholo	Udidi	Ezifumaneka ngaphandle kwesicelo*	Ezifumaneka ngesicelo*
		zamaphondo ngokunjalo nokujongwa kohlolo novavanyo.		
		ISicwangciso soPhuhliso lobuGcisa seSizwe.	Hayi	Ewe
		INkqubo yeNkxaso ngobuChwepheshe yoMzantsi Afrika yase-Cuba.	Hayi	Ewe
		INkqubo-sikhokelo yokuDluliswa kwezaKhono	Hayi	Ewe
		INcwadi yokuFundisa abaxhasi kwezeziNdlu.	Ewe	Hayi
		IINcwadi zoQeqesho zooCeba (i-DHS ne-SALGA).	Ewe	Hayi
		INTshayelelo kubaLawuli beSebe leeNdawo zokuHlaliswa kwabaNtu	Ewe	Hayi

9. INKQUBO YOKUCELA UFIKELELO KULWAZI

IYunithi ye-PAIA ifumana izicelo zofikelelo kulwazi egameni le-DIO kwaye inceda nawuphi na umntu onqwenela ukufaka isicelo.

Ngayo nayiphi na imibuzo ephathelene nokufakwa kwesicelo sofikelelo kulwazi kunye nokungeniswa kwesi(zi)celo zofikelelo kwiSebe leeNdawo zokuHlaliswa kwabaNtu kufuneka zenziwe ngokutyelela iYunithi ye-PAIA ku- 260 Justice Mahomed Street okanye ngefeksi 086 471 1939 okanye utsalele iYunithi ye-PAIA ku- (012) 444 9045/57/58 okanye thumela i-imeyile ku-paia@dhs.gov.za.

9.1. NGUBANI ONGACELA ULWAZI?

- Nabanina angacela ulwazi.
- Abaceli bobuqu abacela ulwazi olumalunga nabo.
- Abaceli abacela ulwazi egameni lomnye umntu. (Umceli ocela egameni lomnye umntu kufuneka aveze ileta yogunyaziso.

9.2. INDLELA YOKUFIKELELA KULWAZI

9.2.1. IIREKHODI EZIFUMANEKA NGAPHANDLE KWESICELO

Iindidi ezithile zeerekhodi zifumaneka ngaphandle kokuba umntu enze isicelo ngenkqubo ye-PAIA ngokwegatya lecandelo le-15(1)(a) lomThetho. Ulwazi/iirekhodi ezifumaneka ngaphandle kwesicelo ziya kwenziwa ukuba zifumaneke kwiwebhusayithi yesebe kunye nakwii-ofisi zesebe ngendlela okanye uhlobo oluceliweyo, ukuba oku kufanelekile kweye kunokwenzeka.

9.2.2. IZICELO ZOMNXEBA

I-DHS iyazamkela izicelo zomnxeba. Inggalelo iya kunikwa isicelo esinjalo esiya kwi-DIO okanye kwiYunithi ye-PAIA ngomnxeba ngeenombolo ezinikwe kule ncwadi. Amagosa eyunithi ye-PAIA aya kugcwalisa iFom A emiselweyo egameni lomceli baze bamnike ikopi yaso ngaphaya koko.

9.2.3. IZICELO ZOMLOMO

Ukuba ngaba umntu akakwazi ukugcwalisa ifom emiselweyo ngenxa yokungakwazi ukufunda okanye ukukhubazeka, umntu onjalo unokwenza isicelo ngomlomo kwi-DIO.

I-DIO kwi-DHS isicelo somlomo iya kusibhala phantsi kwifom emiselweyo izinike umceli ikopi emva koko.

9.3. IZICELO EZISESIKWENI NGOKWEEMFUNeko ZE-PAIA

INYATHELO LOKU-1: Ukugcwalisa ifom yesicelo yofikelelo kulwazi emiselweyo

- Fumana yesicelo emiselweyo, iFom A equlethwe kwiSihlomelo B sale ncwadi, ekwafumaneka nakwiwebhusayithi ye-DHS okanye nayiphi na i-ofisi ye-DHS xa iceliwe.
- Gcwalisa ifom emiselweyo ngokupheleleyo nangokucacileyo ekhombisa i(ii)rekhodi e(zi)celiweyo kwaye usayine ifom kwisithuba esinikiweyo.
- Ukuba ngaba isicelo senziwa egameni lomnye umntu, umceli kufuneka angenise ubungqina bamandla lawo senziwa ngawo isicelo, ukuze koneliseke i-DIO.

INYATHELO LESI-2: Intlawulo

Umceli kufuneka ahlawule imali emiselweyo yesicelo ukuba ilindelekile kwaye xa eceliwe ukuba enze njalo. Ngokuyidiphozitha kwinombolo ye-akhawunti enikwe ngezantsi. Abantu abadweliswe kumhlathi we-9.5.4 banyenyiselwe ekuhlawuleni imali yesicelo.

INDLELA YOKUHLAWULA

Igama le-akhawunti	ISebe leeNdawo zokuHlaliswa kwabaNtu
Ibhanki	Standard Bank
INombolo ye-akhawunti	010160310
Igama lesebe	Pretoria, Van der Walt Street
IKhowudi yesebe	010145
Ireferensi	UmThetho wokuKhuthazwa koFikelelo kuLwazi (UmThetho wokuKhuthazwa koFikelelo kuLwazi)

INYATHELO LESI-3: Ukungeniswa kwesicelo

Umceli kufuneka angenise ifom yesicelo kwi-DIO oko ekwenza ngeYunithi ye-PAIA kwidilesi, inombolo yefeksi okanye idilesi ye-imeyile njengoko inikiwe kule ncwadi. Ifom yesicelo kufuneka ikhatshwe bubungqina bentlawulo yemali ehlawulelwa isicelo. Akukho bungqina buhlonyelweyo kubantu abafanelekileyo ukuba banyenyiselwe, kodwa izizathu zokunyenyiselwa kufuneka zixelwe ngokucacileyo kwifom.

9.4. AMAXESHA EKULINDELEKE UKUBA KUJONGWE NGAWO IZICELO

Ngokwecandelo lama-25 lomThetho, i-DHS iya kuthi kwiintsuku ezingama-30 zokufumana isicelo yenze isigqibo sokuba isivume na okanye isale isicelo ize inike isaziso esinezizathu ngokuphathelene noko.

Iithuba leentsuku ezingama-30 elo i-DHS kuza kufuneka yenze isigqibo ngalo sokuba iyasivuma na okanye iyasala isicelo, linokolulwa liye kwithuba elingedluli iintsuku ezingama-30 ukuba ngaba isicelo sesolwazo oluninzi, okanye ukuba isicelo sifuna ukukhangelwa kolwazi olugcinwe yenye i-ofisi ye-DHS kwaye ulwazi ngeke lufumaneke kwithuba leentsuku ezingama-30 zokuqala.

I-DHS iya kwazisa umceli ngokubhalwe phantsi ukuba ngaba kufunwa ixesha eloluliweyo.

9.5. IIMALI EZIHLAWULWAYO

UmThetho ubonelela ngentlobo ezimbini zemali ehlawulwayo, ezizezi:

9.5.1. IMALI YESICELO ENGABUYISWAYO

Umceli, ngaphandle komceli wobuqu, ocela ufikelelo kulwazi olugcinwe liSebe kuza kufunwa ukuba ahlawule imali emiselweyo engama-R35,00 ehlawulwa phambi kokuba kusetyenzwe ngokungaphaya ngesicelo njengoko kuxeliwe kwiFom A, phambi kokuba kusetyenzwe ngayo. Abantu abadweliswe kumhlathi we-9.5.4 wale ncwadi banyenyiselwe ekuhlawuleni imali yesicelo.

I-DIO iya kugcina i(ii)rekhodi de umceli obandakanyekayo ahlawule imali ehlawulwayo (ukuba kukho nayiphi na).

9.5.2. IMALI EHLAWULELWA UFIKELELO

- Imali yofikelelo ehlawulwayo kuzo zonke iimeko apho isicelo sofikelelo sinikwayo seendleko zokuvelisa kwakhona kunye, ukuba kuyenzeka, imali yokuposa kunye kunye nexesha elifanelekileyo elifunwayo lokukhangela kunye nokulungisa irekhodi ukuba lixelwe.
- Abantu abaphantsi komhlathi we-9.5.4 wale ncwadi banyenyiselwe ekuhlawuleni imali ehlawulelwa ufikelelo.
- Umceli ocela iikopi zazo zonke iirekhodi ezifumaneka kuwonke-wonke, akahlawuli imali ehlawulelwa isicelo engama- R35, 00, kodwa uyakuhlawula imali yofikelelo yokuvelisa kwakhona, ukuba kuyenzeka.

I-DIO iya kugcina irekhodi de umceli ahlawule imali ehlawulwayo (ukuba kukho nayiphi na).

9.5.3. IIDIPHOSITHI

Ukuba ngaba ukukhangela kwe (ii) rekhodi kunye nokulungiswa kwe (ii) rekhodi ukuba i(zi)xelwe, kuqukwa nolungiselelo lokuyenza ukuba ifumaneka ngohlobo lwesicelo, kufuna ngaphezulu kweeyure ezichazwe le njongo kwimimiselo, i-DIO iyakwazisa umceli ukuba ahlawule idiphosithi yenxenywe emiselweyo (engekho ngaphezulu kwesithathu) yemali yofikelelo eyakuhlawula ukuba sivunyiwe isicelo.

Ukuba ngaba idiphosithi ihlawulwe ngokunxulumene nesicelo sofikelelo olwaliweyo, i-DIO ye-DHS iya kubuyisela idiphosithi kumceli.

9.5.4. UNYENYISO

Aba bantu balandelayo banyenyiselwe ekuhlawuleni imali ehlawulelwa ufikelelo exelwe kwicandelo 22(6) lomThetho:

- Umntu oyedwa ongeniso yakhe yonyaka, emva kotsalo oluvunyiweyo ayodluli kwi-R14 712, 00 ngonyaka.
- Abantu abashatileyo okanye amaqabane obomi abangeniso yabo yonyaka emva kotsalo oluvumelekileyo ingedluliyo kuma-R27 192, 00 ngonyaka.
- Apho iindleko zokuqokelela nayiphi na imali ehlawulwayo ngokunxulumene nokukhangela kunye nokulungisa irekhodi ukuba ixelwe yodlula imali ebiziweyo, imali ehlawulwayo enjalo ayisebenzi.
- Iindleko zokukhangela nokulungisa azisebenzi kwiirekhodi zobuqu zomceli.
- Isicelo kunye nemali ehlawulelwa ufikelelo ayisebenzi kwiirekhodi ezicelwe ligosa eligcinayo okanye ngumphandi ngokugcina ngeenjongo zophando lokugcina okanye uphando ngokwamagatya omThetho wokuGcina, 1998 (umThetho oyiNombolo yama-99 ka-1998) okanye icandelo lama-44 lemimiselo yalo.

10. UFIKELELO OLWALIWEYO KUNYE NEZIBHENO

10.1. IMIHLABA YOKWALA

I-DHS inokusala isicelo sofikelelo kulwazi lwayo ukuba ngaba ulwazi oluceliweyo lunxulumene:

- Nokhuselo olugunyazisiweyo lobucala beQela lesiThathu elingumntu ngokothetho, kuqukwa nomntu oswelekileyo.
- Nokhuselo olugunyazisiweyo lweerekhodi ezithile zeNkonzo yeRhafu yoMzantsi Afrika.
- Ukhuselelo olugunyazisiweyo lolwazi lorhwebo lweqela lesithathu.
- Nokhuselo olugunyazisiweyo lolwazi lorhwebo oluyimfihlo kunye nokhuselo lolwazi oluthile olulolunye oluyimfihlo lweqela lesithathu.
- Nokhuselo olugunyazisiweyo lokukhuseleka kwabantu kunye nokhuselo lwepropati.
- Nokhuselo olugunyazisiweyo lweedokethi zamapolisa kwiinkqubo zebheyile kunye nokhuselo lokunyanzeliswa komthetho kunye neenkqubo zomthetho.
- Nokhuselo olugunyazisiweyo lweerekhodi ezivela kwiinkqubo zomthetho.
- Ukhuselelo, ukhuseleko kunye nobudlelwane bamazwe beRiphabliki.
- Imidla yezoqoqosho kunye nentlalontle yezimali zeRiphabliki kunye nemisebenzi yorhwebo yeSebe.
- Nokhuselo olugunyazisiweyo lolwazi lophando lweqela lesithathu kunye nokhuselo lolwazi lophando lweSebe.
- Imisebenzi yeSebe.
- Izicelo eziyimfeketho kunye nezicaphukisayo okanye nokutshintshwa ngokungafanelekanga nangokukhulu kwemithombo yeSebe.

10.2. UKUXELA OKUGUNYAZISIWEYO NGOKUSEMDLENI WOLUNTU

Isicelo sofikelelo kwirekhodi elo ngenye indlela sinokwaliwa ngokwemihlaba yokwaliwa ngokwe-PAIA nakuba kunjalo, sinokuvunywa kwiimeko ezo ukuxela kwerekhodi kusemdleni woluntu, kwaye ukuba umdla onjalo woluntu wodlula ngokucacileyo umonakalo oxeliweyo phantsi kwemihlaba yokwaliwa.

10.3. UKUTHATHA NGOKUBA SIYALIWA ISICELO

Ukuba ngaba i-DIO ayikwazi ukuthatha isigqibo sofikelelo kumceli kwithuba elimiselweyo leentsuku ezingama-30, i-DIO iya kuthathwa ngokuba isalile isicelo esinjalo. Umceli unokufaka isibheni sangaphakathi ngokuchasene nokwaliwa okunjalo.

10.4. AMANYATHELO UKUBA SIYALIWA ISICELO SOFIKELELO

10.4.1. ISIBHENO SANGAPHAKATHI

Umceli osikhalazelayo isigqibo se-DIO sokwala isicelo sofikelelo kulwazi unokufaka isibheno sangaphakathi kuMphathiswa weSebe leeNdawo zokuHlaliswa kwabaNtu kwisigqibo esikhankanyiweyo.

10.4.2. UKUFAKA ISIBHENO SANGAPHAKATHI

Isibheno sangaphakathi:

- Kufuneka sifakwe kwiintsuku ezingama-60 ezisemva kokuba umceli azisiwe ngesigqibo esithathiweyo kwisicelo.
- Kufuneka agcwalise ifom yesibheno sangaphakathi emiselweyo equlethwe kwiSihlomelo "C" sale ncwadi, ekwafumaneka nakwiwebhusayithi ye-DHS [www.dhs.gov.za], okanye nakweyiphi na i-ofisi ye-DHS, xa iceliwe.
- Agcwalise ifom yesibheno sangaphakathi emiselweyo ngokugcweleyo ekhombisa isigqibo ngokubhekisele kwisibheno sangaphakathi esifakiweyo.
- Asayine ifom yesibheno sangaphakathi kwisithuba esinikiweyo.
- Angenise iSibheno sangaPhakathi kwi-DIO oko ekwenza ngeenkucukacha zoqhagamshelwano okanye idilesi enikwe lule ncwadi.

10.4.3. USEKELA GOSA LOLWAZI KUFUNEKA ADLULISELE ISIBHENO SANGAPHAKATHI KUGUNYAZIWE OFANELEKILEYO

- I-DIO, iyakuthi kwiintsuku ezili-10 zokufumana isibheno sangaphakathi, isithumele, kunye nezizathu zesigqibo kwisicelo, kuunyaziwe ofanelekileyo.
- Ungunyaziwe ofanelekileyo kufuneka athathele ingqalelo kwaye enze isigqibo ngesibheno sangaphakathi kwiintsuku ezingama-30 ezisemva kwesaziso sokuba isibheno sangaphakathi sifunyenwe.
- Isigqibo sikagunyaziwe ofanelekileyo kufuneka mhlawumbi siqinisekise okanye sibekele ecaleni isigqibo se-DIO, kwaye sitshintshe isigqibo kwisicelo.

10.5. ISICELO ESIYA ENKUNDLENI

Umceli ongaphumelelanga kwisibheno sangaphakathi, kwiintsuku ezili-180 zokufumana isaziso sesigqibo kwiSibheno sakhe sangaphakathi, unokufaka isicelo enkundleni sesigqibo esifanelekileyo njengoko kuxeliwe kwiCandelo lama-78(1).

11. UKUFUMANEKA KWENCWADI

11.1. Le Ncwadi iza kwenziwa ifumaneke ngeelwimi ezisemthethweni ezahlukeneyo ezintathu kwiwebhusayithi yeDHS kunye nazo zonke ii-ofisi zesebe ngokunjalo nakwiKomishoni yamaLungelo oluNtu.

11.2. Le ncwadi inokupapashwa kwiGazethi kaRhulumente.

12. UKUHLAZIYWA NOKUJONGWA KWAKHONA KWENCWADI

Le ncwadi iza kujongwa kwakhona ngonyaka liSebe kwaye apho kukho khona imfuneko kwaye iyakuhlaziwa ize ipapashwe njengoko kuxeliwe kwi-PAIA.

4 No. IGAZETHI KARHULUMENTE,
**ISAZISO SIKARHULUMENTE
GOEWERMENTSKENNISGEWING**

**SEBE LEZOBULUNGISA
DEPARTEMENT VAN JUSTISIE**

Inombol

9 Matshi 2001

**UMTHETHO WOKUKHUTHAZWA KOFIKELELO KULWAZI, 2000
IMIMISELO ENXULUMENE NOKUKHUTHAZWA KOFIKELELO
KULWAZI**

UMphathiswa wezobuLungisa noPhuhliso loMgaqo-siseko uye, phantsi kwecandelo
lama-92 lomThetho
wokuKhuthazwa koFikelelo kuLwazi), 2000 (umThetho oyiNombolo yesi-2 ka-2000),
wenza imimiselo kwiShedyuli.

ISHEDYULI

Inkcazo

1. Kule Mimiselo naliphi na igama okanye ibinza elinikwe intsingiselo kulo mThetho liyakuba nalo ntsingiselo kwaye, ngaphandle kokuba umxhlo ukhombisa ngenye indlela –

"UmThetho" uthetha umThetho wokuKhuthazwa koFikelelo kuLwazi, 2000 (umThetho oyiNombolo yesi-2 ka-2000).

Uhlobo lwesicelo

2. Isicelo sofikelelo kwirekhodi, njengoko kuxeliwe kwicandelo le-18(1) lomThetho, kufuneka senziwe ngokohlobo lweFom A yeSihlomelo.

Imali ehlawulwayo kwiirekhodi zequmrhu likarhulumente

3. (1) Imali ehlawulelwa ukuvelisa kwakhona, ekubhekiselwe kuyo kwicandelo le-15(3) lomThetho, ingale ndlela ilandelayo:

R

- (a) Ngekopi nganye efotokotshweyo yesayizi yephepha le-A4 okanye
Inxenye yayo ngaphaya koko 0, 60
- (b) Ngekopi nganye eshicilelweyo yesayizi yephepha le-A4 okanye inxenye
Yayo ngaphaya koko ekwikhompyutha okanye engeletroniki okanye engohlobo
olufundeka ngomatshini 0, 40
- (c) Ikopi engohlobo olufundeka kwikhompyutha ekwi-
(i) icwecwe lesitifi 5,00
(ii) icwecwe le-compact 40, 00
- (d) (i) Ngekopi yemifanekiso ebonwayo
Ngephepha lesayizi ye-A4 okanye inxenye yayo ngaphaya koko 22, 00
(ii) Ngekopi yemifanekiso ebonwayo 60, 00
- (e) (i) Ngekopi yerekhodi evakalayo
ngephepha lesayizi ye-A4 okanye inxenye yayo ngaphaya koko 12, 00
(ii) Ngekopi yerekhodi evakalayo 17, 00

(2) Imali yesicelo ehlawulwayo ngumceli ngamnye, ngaphandle komceli wobuqu ekubhekiselwekuye candelo lama-22(1) lomThetho, ngama-R 35, 00.

(3) Imali ehlawulelwa ufikelelo ngumceli ekubhekiselwe kuye kwicandelo lama-22(7) lomThetho, ngaphandle kokuba

unyenyiselwe phantsi kwecandelo lama-22(8) lomThetho, inhgale ndlela ilandelayo:

R

- (a) Ngekopi nganye efotokotshweyo yesayizi yephepha le-A4 okanye
inxenye yayo ngaphaya koko 0, 60
- (b) Ngekopi nganye eshicilelweyo yesayizi yephepha le-A4 okanye inxenye
yayo ngaphaya koko ekwikhompyutha okanye engeletroniki okanye engohlobo
olufundeka ngomatshini 0, 40
- (c) Ikopi engohlobo olufundeka kwikhompyutha ekwi-

- (i) icwecwe lesitifi 5.00
- (ii) icwecwe le-compact 40,00
- (d) Ⓢ Ngekopi yemifanekiso ebonwayo.
ngephepha lesayizi ye-A4 okanye inxenye yayo ngaphaya koko 22, 00
- (i) Ngekopi yemifanekiso ebonwayo 60, 00
- (e) Ⓢ Ngokukhutshelwa kwerekhodi evakalayo,
ngephepha lesayizi ye-A4 okanye inxenye yayo ngaphaya koko 12,00
- (i) Ngekopi yerekhodi evakalayo 17, 00
- (f) Ukukhangela iirekhodi ukuze zixelwe, i-R15, 00 kwiyure
nganye okanye kwinxenye yeyure, kukhutshelwa
ngaphandle iyure yokuqala, efuneka ngokufanelekileyo
kuphando olunjalo.

(4) Imali yokuqala ehlawulelwa ukuposa xa ikopi yerekhodi kufuneka iposelwe kumceli.

- (5) Ngenxa yeenjongo zecandelo lama-22(2) lomThetho, oku kulandelayo kuyasebenza;
- liyure ezintandathu kuba iyure ekudluliswe ngazo idiphozithi iyahlawulwa; kwaye
 - isinye sesithathu semali ehlawulelwa ufikelelo sihlawulwa njengediphozithi ngumceli.

Uhlobo lwesicelo

~~Isicelo kwinkqubo yekwazi lama-53(1) lomThetho~~
senziwe ngokohlobo lweFom B yeSihlomelo.

Imali ehlawulwayo kwiirekhodi zequmrhu labucala

5. (1) Imali ehlawulelwa ukuvelisa kwakhona, ekubhekiselwe kuyo kwicandelo lama-52(3) lomThetho, ingale ndlela ilandelayo:

	R
(a) Ngekopi nganye efotokotshweyo yesayizi yephepha le-A4 okanye inxenye yayo ngaphaya koko	1, 10
(b) Ngekopi nganye eshicilelweyo yesayizi yephepha le-A4 okanye inxenye yayo ngaphaya koko ekwikhompyutha okanye engeletroniki okanye engohlobo olufundeka ngomatshini	0,75
(c) Ikopi engohlobo olufundeka kwikhompyutha ekwi-	
(i) icwecwe lesitifi	7, 50
(ii) icwecwe le-compact	70, 00
(d) (i) Ngekopi yemifanekiso ebonwayo, ngephepha lesayizi ye-A4 okanye inxenye yayo ngaphaya koko	40,00
(ii) Ngekopi yemifanekiso ebonwayo	60, 00
(e) (i) Ngokukhutshelwa kwerekhodi evakalayo, ngephepha lesayizi ye-A4 okanye inxenye yayo ngaphaya koko	20,00
(ii) Ngekopi yerekhodi evakalayo	30, 00

(2) Imali yesicelo ehlawulwayo ngumceli, ngaphandle komceli wobuqu ekubhekiselwe kuye kwicandelo lama- 54(1) lomThetho ngama-R50, 00.

(3) Imali ehlawulelwa ufikelelo ngumceli ekubhekiselwe kuye kwicandelo lama-54(7) lomThetho, ngaphandle kokuba unyenyeselwe phantsi kwecandelo lama-54(8) lomThetho, ingale ndlela ilandelayo:

R

- (a) Ngekopi nganye efotokotshiweyo yesayizi yephepha le-A4 okanye inxenye yayo ngaphaya koko 1, 10
- (b) Ngekopi nganye eshicilelweyo yesayizi yephepha le-A4 okanye inxenye yayo ngaphaya koko ekwikhompyutha okanye engeletroniki okanye engohlobo olufundeka ngomatshini 0.75
- (c) Ikopi engohlobo olufundeka kwikhompyutha ekwi-
 - (i) icwecwe lesitifi 7,50
 - (ii) icwecwe le-compact 70,00
- (d) (i) Ngekopi yemifanekiso ebonwayo, ngephepha lesayizi ye-A4 okanye inxenye yayo ngaphaya koko 40.00
- (ii) Ngekopi yemifanekiso ebonwayo 60.00
- (e) (i) Ngokukhutshelwa kwerekhodi evakalayo, ngephepha lesayizi ye-A4 okanye inxenye yayo ngaphaya koko 20, 00
- (ii) Ngekopi yerekhodi evakalayo 30, 00
- (f) Ukukhangela iirekhodi ukuze zixelwe, ama-R30, 00 kwiyure nganyeokanyekwinxenyeyeyure efunekayo ngokufanelekileyo kukhangelo olunjalo.

(4) Imali yokuqala ehlawulelwa ukuposa xa ikopi yerekhodi kufuneka iposelwe kumceli.

(5) Ngenyane njengocandelo lama-54(2) lomThetho, okukulandelayo kuyasbenza:

- (a) Iiyure ezintandathu kuba iiyure ekudluliswe ngazo idiphozithi iyahlawulwa; kwaye
- (b) isinye sesithathu semali ehlawulelwa ufikelelo sihlawulwa njengediphozithi ngumceli.

Isaziso sesibheno sangaphakathi

6. Isaziso sesibheno sangaphakathi, njengoko kuxeliwe kwicandelo lama-75(1) lomThetho, kufuneka senziwe ngokohlobo lweFom C yeSihlomelo.

Imali ehlawulelwa isibheno

Irhafu yentengo

7. Imali ehlawulelwa isibheno esebenzayo ngokunxulumene nokufakwa kwesibheno ngumceli ngokubhekisele ekukhatyweni kwesicelo sakhe sofikelelo, njengoko kuxeliwe kwicandelo lama-75(3)(a) lomThetho. Ngama-R50, 00.

8. AmaqhulumentenawabucabachaswepantsikomThethoPhuylengo, 1991 (umThetho, Nombobyan 89 ka-1991), njengebathengisi banokongeza irhafu yentengo kuyo yonke imali ehlawulwayo emiselwe ngokwale mimiselo.

Ukuqalisa

9. Lemimisela kupakusenzangwe-9Mashi2001.



IRIPHABLIKI YOMZANTSI AFRIKA

J750

**UNdlunkulu weSebe leeNdawo zokuHlaliswa kwabaNtu
IFom A ye-PAIA yesiCelo soFikelelo kwi (ii) Rekhodi zeQumrhu likaRhulumente**

KUSETYENZISWA LISEBE	
INombolo yeReferensi: _____	
Isicelo sifunyenwe ngu _____ (xela isikhundla, igama nefani leGosa loLwazi/Sekela Gosa loLwazi) ngo _____ (umhla), e _____ (indawo),	
IMali ehlawulelwa isicelo (ukuba kukho nayiphi): R _____	
Idiphozithi (ukuba kukho nayiphi): R _____ R _____	
IMali ehlawulelwa ufikelelo: R _____	

USEKELA GOSA LOLWAZI:	

**(ICandelo le-18 lomThetho wokuKhuthazwa koFikelelo kuLwazi, 2000 (umThetho oyiNombolo yesi-2 ka-2000))
[uMmiselo wesi-6]**

A. Iinkcukacha zequmrhu likarhulumente

Thumela okanye uhambise iFom yakho yeSicelo egcwalisiweyo ku:

IiNkcukacha zoQhagamshelwano zeZiko le-PAIA			
IDilesi yePosi:	The Deputy Information Officer National Department of Human Settlements Private Bag X644 PRETORIA Republic of South Africa 0001		
IDilesi yeSitalato: (Ngokuhambisa ngesandla)	The Deputy Information Officer: PAIA 260 Justice Mahomed Street Sunnyside PRETORIA		
INombolo yeFeksi	(086) 471 1939		
iIDilesi yeImeyile	paia@dhs.gov.za		
liYure zokuSebenza:	07:30 - 09:30 09:45 - 12:15 13:00 - 14:30 14:45 - 16:00	liYure zoMhlawulisi:	10:00 - 11:00 14:00 - 14:30
liNkcukacha zokuBhanka	IiNkcukacha zeBhanki: ISebe leeNdawo zokuHlaliswa kwabaNtu Ibhanki: Standard Bank, Van der Walt (010145), Inombolo ye-Akhawunti: 010160310		

D. Iinkcukacha zerekhodi

- (a) Nika iinkcukacha ezipheleleyo zerekhodi elo kufunwa ufikelelo kulo, kuqukwa nenombolo yereferensi ukuba ngaba uyayazi, ukuze likwazi ukufunyanwa irekhodi.
- (b) Ukuba ngaba isithuba esinikiweyo asonelanga, nceda uqhube kwiphepha elongezelelweyo uze ulihlomele kule fom. Umceli kufuneka asayine onke amaphepha awongezelekileyo aneenombolo.

1. Inkcazo yerekhodi okanye inxenye ebandakanyekayo yerekhodi:

.....

.....

.....

.....

.....

2. INombolo yeReferensi, ukuba iyafumaneka:

3. Naziphi na iinkcukacha ezingaphaya zerekhodi njengohlobo lwe(lwee)rekhodi umzekelo, imizuzu njalo njalo...:

4. ISebe/iCandelwana apho ligcinwe khona irekhodi (ukuba liyaziwa)

.....

.....

E. Imali ezihlawulwayo

- (a) Isicelo sofikelelo kwirekhodi, ngaphandle kwerekhodi eliqulethe ulwazi lobuqu malunga nawe, luya kulungiswa kuphela emva kokuba imali ehlawulelwa isicelo ihlawulwe, imali yesicelo ngama-R35,00.
- (b) Uya kwaziswa ngesixa ekufuneka sihalwulwe njengemali ehlawulelwa isicelo.
- (c) **Imali ehlawulwayo yokufikelela** kwirekhodi ixhomekeka kuhlobo olufunwa ngalo ufikelelo kunye nexesha elifanelekileyo lokukhangela kunye nokulungisa irekhodi.
- (d) Ukuba ngaba ufanelekile ukuba unyenyiselwe intlawulo yayo nayiphi na imali ehlawulwayo, nceda uxele isizathi sokunyenyiselwa.

Isizathu sokunyenyiselwa ekuhlawuleni imali ehlawulwayo:

.....

.....

F. Uhlobo lofikelelo kwirwekhodi

Ukuba ngaba uthintelwa kukukhubazeka ukuba ufunde, ujonge okanye umamele kwirekhodi ngohlobo lofikelelo olubonelelwe kwisi-1 ukuya kwisi-4 ngezantsi, xela ukukhubazeka kwakho kwaye ukhombise ukuba loluphi na uhlobo olufuneka ngalo irekhodi.

Ukukhubazeka:	Uhlobo elifuneka ngalo irekhodi:
Phawula ibhokisi efanelekileyo ngo- X .	
<p>AMANQAKWANA:</p> <p>(a) Ukuthobela isicelo sakho sofikelelo kwirekhodi ngohlobo oluceliweyo kunokuxhomekeke kuhlobo olo lufumaneka ngalo irekhodi.</p> <p>(b) Ufikelelo ngohlobo oluceliweyo lunokwaliwa kwiimeko ezithile. Kwimeko enjalo uyakwaziswa ukuba ufikelelo lunokunikwa ngolunye uhlobo.</p> <p>(c) Imali ehlawulwayo yokufikelela kwirekhodi, ukuba kukho nayiphi, iya kumiselwa inxenye yayo luhlobo ololucelwe ngalo ufikelelo.</p> <p>(d) Ukuba ngaba irekhodi alifumaneki ngolwimi olukhethiweyo okanye alukho ukhetho olukhonjisiweyo ngumceli, ufikelelo luya kunikwa ngolwimi elifumaneka ngalo irekhodi [icandelo lama-31J.</p> <p>(e) Imali ehlawulelwa ukukhangela kunye nokulungisa irekhodi li-R15-00 kwiyure nganye okanye kwinxenye yeyure, kukhutshelwa ngaphandle iyure yokuqala</p>	

1. Ukuba ngaba irekhodi lingohlobo olubhaliweyo okanye olushicilelweyo:			
	ikopi yerekhodi*		ukuhlolwa kwerekhodi
2. Ukuba ngaba irekhodi linemifanekiso ebonwayo -(oku kuquka iifoto, izilayidi, okurekhodwe kwividiyo, imifanekiso eyenziwe ngekhompyutha, iziketshi, njalo njalo):			
	bona imifanekiso		iikopi zemifanekiso*
			ukukhutshelwa kwemifanekiso*
3. Ukuba iirekhodi zinamagama okanye ulwazi olurekhodiweyo olunokhutshelwa kwisandi:			
	mamela isandi (ikhasethi evakalayo)		ukukhutshelwa kwesandi* (uxwebhu olubhaliweyo okanye olukhutshelweyo)
4. Ukuba irekhodi ligcinwe kwikhompyutha okanye ngeletroniki okanye ngohlobo olufundeka kumatshini:			
	ikopi eshicilelweyo yerekhodi*		ikopi eshicilelweyo yolwazi oluthathwe kwirekhodi*
			ukukhutshelwa ngohlobo olufundekayo* (isitifi okanye icwecwe lediski)
*Ukuba ucele ikopi yokukhutshelwa kwerekhodi (ngentla), ingaba unqwenela ukuba ikopi okanye okukhutshelweyo kuthunyelwe kuwe ngeposi? Imali yokuthumela iyahlawulwa.			EWE
			HA YI
Qaphela ukuba xa lingafumaneki irekhodi ngolwimi olukhethayo, ufikelelo lunokunikwa ngolwimi olo lufumaneka ngalo irekhodi.			
Loluphi ulwimi okhetha ukulifumana ngalo irekhodi?			

G. Isaziso sesigqibo ngokuphathelene nesicelo sofikelelo

<p>Uya kwaziswa ngokubhalwe phantsi ukuba ingaba isicelo sakho sivunyiwe/sikhatyiwe na. Ukuba ngaba unqwenela ukwaziswa ngenye indlela, nceda uxele indlela kwaye unike iinkcukacha ezibandakanyekayo ukuze kuthotyelwe isicelo sakho.</p>
--

Ukhetha ukwaziswa njani ngesigqibo esiphathelene nesicelo sakho sokufikelela kwirekhodi?

IFOM A: ISICELO SOFIKELELO KWIREKHODI LEQUMRHU LIKARHULUMENTE

Isayinwe e ngolu suku..... luka unyaka

.....
USAYINO LOMCELI /
UMNTU ISICELO ESENZIWA EGAMENI LAKHE

IFOM B**ISAZISO SESIBHENO SANGAPHAKATHI**

(ICandelo lama-75 lomThetho wokuKhuthazwa koFikelelo kuLwazi, 2000 (umThetho oyiNombolo yesi-2 ka-2000))

[UUmiselo wesi-8]**XELA INOMBOLO YAKHO****YEREFERENSI:****Iinkcukacha****zequmrhu****likarhulumente**

IGosa loLwazi/Sekela Gosa loLwazi:

A. Iinkcukacha zomceli/iqela lesithathu elifaka isibheno sangaphakathi

- a) *Iinkcukacha zomntu ofaka isibheno sangaphakathi kufuneka zinikwe ngezantsi.*
- b) *Ubungqina besikhundla eso sikwa ngaso isibheno, ukuba kuyenzeka, kufuneka buhlonyelwe.*
- c) *Ukuba ngaba umbheni ngumntu wesithathu kwaye ayinguye umntu ocele ulwazi ekuqaleni, iinkcukacha zomceli kufuneka zinikwe ku-C ngezantsi.*

Amagama apheleleyo nefani: _____

Inombolo yesazisi: _____

IDilesi yePosi: _____

Inombolo yefeksi: _____

INombolo yomNxeba: _____ Idilesi ye-imeyile: _____

Isikhundla eso isibheno sangaphakathi senziwa ngaso egameni lomnye umntu:

Iinkcukacha zomceli

Eli candelo kufuneka ligcwaliswe KUPHELA ukuba iqela lesithathu (kunomceli) lifaka isibheno sangaphakathi.

Amagama apheleleyo nefani: _____

Inombolo yesazisi: _____

C. Isigqibo eso sifakwa ngaso isibheno sangaphakathi

<i>Phawula isigqibo eso sifakwa ngaso isibheno sangaphakathi ngo-X kwibhokisi efanelekileyo:</i>	
	Ukwaliwa kwesicelo sofikelelo
	Isigqibo esiphathelene nemali ehlawulwayo ngokwecandelo lama-22 lomThetho
	Isigqibo esiphathelene nokwandiswa kwethuba elo isicelo kufunbeka kusetyenzwe ngasdo ngokwecandelo lama-26(1) lomThetho
	Isigqibo ngokwecandelo lama-29(3) lomThetho sokwala ufikelelo ngohlobo oluceliweyo ngumceli
	Isigqibo sokuvuma ufikelelo kwisicelo

D. Imihlaba yokubhena

Ukuba ngaba isithuba esinikiweyo asonelanga, nceda uqhube kwiphepha elongezelelweyo uze ulihlomele kule fom. Kufuneka usayine onke amaphepha awongezelelekileyo aneenombolo.

Xela imihlaba leyo sisekelwe kuyo isibheno: _____

Xela naluphi na olunye ulwazi olunokubaluleka ekuthatheleni ingqalelo isibheno: _____

F. ISaziso sesigqibo sokubhena

Uyakwaziswa ngokubhalwe phantsi ngesigqibo sesibheni sakho sangaphakathi. Ukuba ngaba unqwenela ukwaziswa ngenye indlela, nceda uxele indlela kwaye unike iinkcukacha ezibandakanyekayo ukuze kuthotyelwe isicelo sakho.

Xela indlela: _____

Incukacha zendlela: _____

Isayinwe e _____ Ngolu _____ suku lwe _____ 20 _____

USAYINO LOMBHENI

<p>KUSETYENZISWA LISEBE:</p> <p style="text-align: center;">IREKHODI ELISEMTHETHWENI LESIBHENO</p> <p>SANGAPHAKATHI: Isibheno sifunyenwe ngo: (umhla) ngu:</p>	
	(xela isikhundla,
<p>Igama nefani leGosa loLwazi/Sekela Gosa loLwazi).</p> <p>Isibheno sihamba nezizathu zesigqibo seGosa loLwazi/Sekela Gosa loLwazi kwaye, apho kwenzekayo, iinkcukacha zalo naliphi na iqela lesithathu elo iirekhodi zinxulumene nalo, singeniswa kwiGosa loLwazi/Sekela Gosa loLwazi ngo _____ (umhla) kugunyaziwe obandakanyekayo.</p>	
<p>ISIPHUMO SESIBHENO:</p> <p>ISIGQIBO SEGOSA LOLWAZI/SEKELA GOSA LOLWAZI SOQINISEKISIWE/ ISIGQIBO ESITSHA SIFAKIWE</p> <p>ISIGQIBO ESITSHA:</p>	
UMHLA:	UGUNYAZIWE OBANDAKANYEKAYO:
SIFUNYENWE LIGOSA LOLWAZI/SEKELA GOSA LOLWAZI KUGUNYAZIWE	
OBANDAKANYEKAYO NGO: (Umhla) : _____	