



human settlements

Department:
Human Settlements
REPUBLIC OF SOUTH AFRICA

IMANUWALI YOMTHETHETHO WOKUKHUTHAZA UKUFINYELELEKA KOLWAZI (I-PAIA)

*Ilungiswe ngokwesahluko se-14 soMthetho Wokukhuthaza Ukufinyeleleka Kolwezi wonyaka
we-2000
(uMthetho wesi-2 we-2000)*

2016-2017

Okuqukethwe

ISENDLALO	iv
INCAZELO YAMAGAMA	vi
1. ISINGENISO	1
2. IZINHLOSO ZALO MTHETHO	1
3. INHLOSO YALE MANUWALI	1
4. UMHLAMHLANDLELA WOKUTHI ISETSHENZISWA KANJANI I-PAIA (ISAHLUKO SE-10) 2	2
5. IMINININGWANE YOKUXHUMANA	2
6. UKUGUNYAZWA KOMTHETHO OKUNIKA ULWAZI IMISEBENZI YOMNYANGO	3
7. IMISEBENZI NESAKHIWO SOMNYANGO WEZOKUHLALISWA KWABANTU	3
7.1. UKUKHA PHEZULU OKUBALULEKILE	3
7.2. UKWAKHEKA KOHLAKA LOMNYANGO	4
7.3. IZINSIZO EZITHOLAKALA KUMNYANGO	5
7.4. IZINHLELO ZOMNYANGO	8
8. UKUFINYELELA KUMAREKHODI AGCINIWE NGUMNYANGO	10
8.1. IZINHLA ZAMAREKHODI AGCINIWE NGUMNYANGO	10
9. INKAMBISO YOKUCELA UKUFINYELELEKA KOLWAZI	23
9.1. UBANI ONGAFAKA ISICELO SOLWAZI?	23
9.2. INDLELA YOKUFINYELELEKA KOLWAZI	24
9.2.1. AMAREKHODI ATHOLAKALA NGOKUZENZAKALELAYO	24
9.2.2. IZICELO ZOCINGO	24
9.2.3. IZICELO ZOMLOMO	24
9.3. IZICELO EZISEMTHETHWENI NGOKWEZIDINGO ZE-PAIA	24
9.4. ISIKHATHI SOKUSEBENZA IZICELO	25
9.5. IZIMALI EZIKHOKHWAYO	25
9.5.1. IZIMALI EZINGABUYISWA	25
9.5.2. IMALI YOKUFINYELELEKA	25
9.5.3. IDIPHOZI	25
9.5.4. UKUDEDELWA	26
10. UKUNQATSHWA KOKUFINYELELEKA KANYE NEZIKHALAZO	26
10.1. IZIZATHU ZOKUKHALAZA	26
10.2. UKUDALULA OKUGUNYAZIWE EMPHAKATHINI	26
10.3. UKWENQATSHWA KWESICELO OKUCATSHANGWAYO	26
10.4. IZIXAZULULO UMA ISICELO SINQATSHIWE	27
10.4.1. UKUKHALAZA KWANGAPHAKATHI	27
10.4.2. UKUFAKA ISIKHALAZO SANGAPHAKATHI	27
10.4.3. USEKELA-MGCINILWAZI UFANELE ADLULISELE UKUKHALAZA KWANGAPHAKATHI KUSIPHATHIMANDLA ESIFANELE	27
10.5. UKUFAKA ISICELO ENKANTOLO	27
11. UKUTHOLAKALA KWEMANUWALI	27
12. UKUFAKWA KOLWAZI OLUSHA NOKUBUKEZWA KWEMANUWALI	27

Izixhumelo

A	Izimali ezikhokhwayo
B	UFomu A: Isicelo Sokufinyeleleka
C	UFomu B: Ukukhalaza Kwangaphakathi

ISENDLALO

Isahluko sama-32 soMthethosisekelo WaseNingizimu Afrika wonyaka we-1996 (umthethosisekelo) unikeza wonke umuntu ilungelo lokufinyeleleka kunoma iluphi ulwazi olugcinwe umbuso noma olugcinwe yinoma yimuphi omunye umuntu futhi oludingekayo ukuze kusetshenziswe noma kuvikelwe nanoma iliphi ilungelo.

UMthetho Wokukhuthazwa Ukufinyeleleka Kolwazi wonyaka we-2000 (uMthetho wesi-2 wonyaka we-2000), (i-PAIA) ekuphumeleliseni la malungelo omthethosisekelo, ikakhulukazi -

- unika yonke imigwamanda kahulumeni umsebenzi wokwenza lula ukufinyeleleka kolwazi/kwamarekhodi angaphansi kwesandla sayo;
- uhlinzeka ngohlaka nezinkambiso zomphakathi zokusebenzisa ilungelo lawo lomthethosisekelo lokuthola ulwazi ngokushesha, okungabizi nokungekho nzima ngokukhonekayo;
- ubeka izindlela imigwamanda kahulumeni okufanele uzibeke, ukwenza lula ukufinyeleleka olwazini olufana nalwazi ngamalungu omphakathi; futhi
- uchaza kafushane izimo lokhu kufinyeleleka okuvinjelwe ezisebenza kukho, kubandakanya lezo ezimayelana nolwazi oluqondene nomuntu ngqo, lwezohwebo, lwezezimali, lomsebenzi noma lwesayensi mayelana nengxenye yesithathu; ulwazi olungathinta izinkambiso zenkantolo noma zamaphoyisa, isib. amadokodo amaphoyisa ezinqutsheni zokudedelwa kusathethwa amacala kanye nezinhlaka ezithile zolwazi loPhiko Lwezentela LaseNingizimu Afrika.

Ngokungathandabuzeki kunemikhawulo ekuphumeleliseni amalungelo omphakathi njengoba kushiwo kusahluko sama-36 soMthethosisekelo kanye nesahluko sama-33 ukuya kwesama-45 se-PAIA.

Ngokuhlonipha izidingo zomthetho we-PAIA kanye nokuba nesasandla ekukhuthazeni ubusobala, ukuziphendulela nokwengamela ngempumelelo komnyango, uMnyango Wezokuhlaliswa Kwabantu ikhiqize imanuwali njengendlela yokukhuthaza ukufinyelela komphakathi kalula olwazini/kumarekhodi asezandleni zawo.

Kwethenjwa ukuthi le manuwali izosebenza njesizinda/ithuluzi elisebenzayo ekuhlinzekeni umphakathi ulwazi olufanele ukuze ukwazi ukusebenzisa ilungelo lawo lokufinyeleleka kolwazi olungaphansi kwesandla soM nyango.



M. TSHANGANA
UMQONDISI-JIKELELE
UMNYANGO WEZOKUHLALISWA KWABANTU
USUKU: 19/09/2016

AMA-AKHRONIMI

I-BAS	: Uhlelo Oluyisisekelo Lokugcinwa kwama-akhawunti
I-BNG	: Ukucaba Indlela Entsha
U-CD	: Umqondisi Omkhulu
I-CSOS	: Usizo Lomlamuli Ohlelweni Lomphakathi
U-DDG	: USekela-Mqondisi-Jikelele
I-DFI	: Izikhungo Zezimali Zentuthuko
I-DHS	: UMnyango Wezokuhlaliswa Kwabantu (“uMnyango”)
U-DIO	: USekela-Mgcinilwazi (obekwe ngomsebenzi ngokwesahluko se-17 se-PAIA)
I-EAAB	: IBhodi Lemidanti Yabathengisa Izindlu
I-FLISP	: Izimali Ezixhumene Nohlelo Loxhaso Labantu Ngabanye
I-HDA	: I-Ejensi Yokuthuthukiswa Kwezezindlu
I-HR	: Ezabasebenzi
I-HS	: Ukuhlaliswa Kwabantu
I-HSDG	: Izibonelelo Zokuthuthukiswa Kokuhlaliswa Kwabantu
I-HSS	: UHlelo Loxhaso lwezindlu
I-ICT	: Ubuchwepheshe Bolwazi Nokuxhumana
U-IO	: UMgcinilwazi (uMqondisi-Jikelele woMnyango)
I-MEIA	: Ukuqapha, Ukukuhlola Knaye Nokuhlola Umthelela
I-NHBRC	: UMkhandlu Kazwelonke Wokubhaliswa Kwabakhi Bemizi
I-NHFC	: INhlangano Kazwelonke Yezimali Zezindlu
I-NURCHA	: I-Ejensi Kazwelonke Yokuvuselelwa Kwezindawo Zasemadolobheni Nezezindlu
I-PAIA	: uMthetho Wokukhuthaza Ukufinyeleleka Kolwazi wonyaka we-2000 (uMthetho wesi-2 wonyaka we-2000)
I-PDHS	: UMnyango Weifundazwe Wokuhlaliswa Kwabantu
I-PHP	: Inqubo Yokuhlaliswa Kwabantu
I-RHLF	: Isikhwama Semalimboleko Yezindlu Zasemaphandleni
I-SABC	: Inhlangano Yezokusakaza YaseNingizimu Afrika
I-SAHRC	: iKhomishane YaseNingizimu Afrika Yamalungelo EsiNtu
I-SALGA	: INhlangano YaseNingizimu Afrika Yohulumeni Basekhaya
I-SHRA	: Isiphathimandla Sokulawula Kwezindlu Enhlalweni
I-SLA's	: Izivumelwano Zamazinga Okwenziwa Kwemisebenzi
I-USDG	: Izibonelelo Zokuthuthukiswa Kwezindawo Zokuhlala Abantu Emadolobheni

INCAZELO YAMAGAMA

	ITemu	Incazelelo/ukuchazwa
1.	Imali yokufinyeleleka	Imali ekhokhwa ekhokhwa ngumfakisiselo yokucingwa, ukulungisa nokukhiqiza amarekhodi aceliwe, njengoba kubekiwe kusahluko sama-22(6) se-PAIA.
2.	uMthetho	UMthetho Wokukhuthaza Ukufinyeleleka Kolwazi wonyaka we-2000 (uMthetho wesi-2 wonyaka we-2000) obuye ubizwe nge-PAIA noma "uMthetho".
3.	uMnyango	UMnyango Wezokuhlaliswa Kwabantu Ophindwe ubizwe nge-DHS.
4.	USekela Mgciniwazi (i-DIO)	Umuntu okhethwe ngokomsebenzi nguMqondisi-Jikelele ukuba enze umgwamanda womphakathi ufinyeleleke ngokukhoneyayo abaceli bamarekhodi awo njengoba kubekiwe kusahluko se-17(1) se-PAIA.
5.	Umhlahlandlela	Umbhalo noma ibhuku elikhiqizwe yiKhomishane YaseNingizimu Afrika Yamalungelo EsiNtu ukwenzela izinhloso zokusiza nanoma imuphi umuntu onefiso sokusebenzisa nanoma iluphi ilungelo ngokwe-PAIA njengoba kubekiwe kusahluko se-10.
6.	uMgciniwazi (IO)	UMqondisi-Jikelele woMnyango Wezokuhlaliswa Kwabantu njengoba echaziwe kusahluko soku-1 se-PAIA.
7.	Ukukhalaza Kwangaphakathi	Ukukhalazela isinqumo sokunqatshelwa ukufinyeleleka kolwazi, njengoba kubekiwe kusahluko sama-74 se-PAIA.
8.	Ulwazi ngomuntu ngqo	Ulwazi omayelana nomuntu ophawuliwe, lubandakanya, kodwa lungapheleli olwazini olumayelana nebulanga, ubulili, ukukhulelwa, isimo somshado, ubuzwe, ukuvela ngokwesizwe noma ngokwenhlalo, ibala, ukubukeka ngokobulili, ngokweminyaka yobudala, ngokwempilo yomzimba neyengqondo, ngokwenhlalakahle, ngokuba nokukhubazeka, ngokwenkolo, ngokwesazela, ngokwenkolelo, ngokwamasiko, ngolimi kanye nangokokuzalwa komuntu njengoba kuchaziwe kusahluko soku-1 se-PAIA.
9.	Umuntu ozicelela yena	Umuntu ofuna ukufinyeleleka olwazini/kwirekhodi eliphethe ulwazi ngaye uqobo njengoba echaziwe kusahluko soku-1 se-PAIA.
10.	Umgwamanda womphakathi	Nanoma imuphi umnyango wombuso noma ukulawulwa emkhakheni kazwelonke noma wesifundazwe kahulumeni, nanoma imuphi umasipala emkhakheni wasekhaya kahulumeni noma isikhungo esenza umsebenzi womphakathi ngokwanoma iluphi iqoqomthetho njengoba kuchaziwe ku-PAIA esahlukweni soku-1. Ophinde ubizwa njengomgwamanda kahulumeni noma umnyango.
11.	Irekhodi	Nanoma iluphi ulwazi olurekhodiwe, nganoma iluphi uhlobo noma indlela olusezandleni zomgcini we-DHS njengoba echaziwe kusahluko soku-1 se-PAIA.
12.	Amarekhodi atholakala ngokuzenzakalelayo	Amarekhodi angafinyeleleka ngaphandle kokuba umuntu acele ukufinyelela ngokoMthetho njengoba kushiwo kusahluko se-15(1)(a) se-PAIA.
13.	Amarekhodi atholakala ngesicelo	Amarekhodi angafinyeleleka ngokulandela izinqubo ze-PAIA njengoba zishiwo kusahluko se-11 nese-18 ze-PAIA; ukufinyeleleka kula marekhodi kunganqatshwa ngokwezizathu zesahluko sama-33 ukuya kwesama-45 soMthetho.

14.	Isiphathimandla Esifanele	UNgqongqoshe Wezokuhlaliswa Kwabantu, noma umuntu okhethiwe ngokubhalwe phansi, nguNgqongqoshe, usebenza ngeZikhalaza Zangaphakathi njengoba zichaziwe kusahluko soku-1 se-PAIA.
15.	Imali Yesicelo	Imali engabuyeli emuva ekhokhwa ngumfakisicelo ngenkathi efaka isicelo sokufinyeleleka ngokwemibandela yesahluko sama-22(1) se-PAIA. (Umfakisicelo ozifakale yena udedelwe ekukhokheni imali yesicelo).
16.	Isicelo sokufinyeleleka	Isicelo sokufinyeleleka kwirekhodi noma kumarekhodi agcinwe nguMnyango esenziwe ngokuhambelana nesahluko sesi-8 nese-11 ze-PAIA
17.	Umfakisicelo	Nanoma yimuphi umuntu owenza isicelo sokufinyeleleka kolwazi noma kwamarekhodi e-DHS noma umuntu owenza enzela omunye umuntu ocela ulwazi njengoba kuchazwe kusahluko soku-1 se-PAIA.
18.	Ingxenye yesithathu	Nanoma yimuphi umuntu, kubandakanya, kodwa kungapheleli kuhulumeni wanoma imuphi umbuso wakwamanye amazwe, izihlangano zamazwe ngamazwe noma uhlaka lukahulumeni noma ihlangano ngaphandle komfakisicelo othintekayo kanye nogwamanda kahulumeni yomphakathi njengoba kuchazwe ku-PAIA kusahluko so-1.
19.	Izinsuku zokusebenza	Nganoma uluphi usuku ngaphandle koMgqibelo, iSonto noma amaholidi omphakathi njengoba echazwe ku-PAIA kusahluko so-1.

1. ISINGENISO

Le manuwali yakhiwe njengesidingo zomthetho ngokuokuhlonipha imibandela yesahluko se-14 soMthetho Wokukhuthaza Ukufinyeleleka Kolwazi wonyaka we-2000 (uMthetho wesi-2 wonyaka we-2000) (i-PAIA) egunyaza yonke imigwamanda kahulumeni ukuba yenze futhi ishicilele imanuwali ekhombisa ulwazi/amarekhodi asezandleni zayo umphakathi ongawathola kalula, kanjalo nalawo adinga ukuba ecelwe ngokusebenzisa imibandela yoMthetho.

Le manuwali imele uMnyango Kazwelonke Wezokuhlaliswa Kwabantu futhi awufaki phakathi ulwazi/amarekhodi eMnyango Yezifundazwe ezahlukenene.

2. IZINHLOSO ZALO MTHETHO

Izinhloso ze-PAIA ngokwesahluko sesi-9:

- ngukwenza kusebenze ilungelo lomthethosisekelo lokufinyeleleka kolwazi olusezandleni zombuso futhi nanoma yiluphi ulwazi olusezandleni zomunye umuntu oludingekayo ekusetshenzisweni noma ekuvikelweni kwanoma yimaphi amalungelo.
- ngukwenza kusebenze ilungelo lokufinyeleleka kolwazi; kuye ngemikhawulo ezwakalayo, kubandakanya, kodwa kungapheleli, emikhawulo okuhloswe ngayo ukuvikelwa ngemfanelo kobungasese, kobumfihlo bezohwebo, kanye nokwengamela ngempumelelo, kangcono nakahle; futhi ngendlela edala ukulingana kwelungelo nanoma imaphi amanye amalungelo, kubandakanya amalungelo akuSomqulu Wamalungelo esiQeshini sesi-2 soMthethosisekelo;
- ngukwenza kusebenze izibopho zomthethosisekelo wombuso ukukhuthaza isiko lamalungelo esiNtu kanye nobulungiswa emphakathini.
- ngukusungula izindlela nezinkambiso ngokuzithandela nangokugunyazwa zokwenza kuzebenze ilungelo lokufinyeleleka kolwazi ngendlela eyenza abantu ukuba bakwazi ukufinyeleleka kumarekhodi kahulumeni nemigwamanda yangasese ngokushesha, ngokungabizi nangaphandle kobunzima ngokukhoneyayo.
- ngukukhuthaza ukwengamela okusobala, okuziphendulelayo kanye nokuyimpumelelo kwayo yonke imigwamanda kahulumeni neyangasese.

3. INHLOSO YALE MANUWALI

Le Manuwali kuhloswe ngayo ukwenza okulandelayo:

- Ukuhlinzeka ngolwazi, ngezinhloso, imisebenzi nezinsizo zoMnyango Wokuhlaliswa Kwabantu (i-DHS) ozihlinzeka umphakathi nokuthi ungakuthola kanjani ukufinyelela kukho.
- Ukuhlinzeka ngolwazi loxhumana lomnyango kumbandakanya imininingwane yekheli leposi, lomgwaqo kanye nele-imeyili; lezinombolo zocingo nefeksi yoMgcinilwazi kanye neSekela-Mgcinilwazi (u-DIO) oqokiwe;
- Ukuhlinzeka ngohlu lamarekhodi atholakala ngokuzenzakalelayo asezandleni zomnyango.
- Ukuchaza izinqubo okufanele zilandelwe amalungu omphakathi ekufinyeleleni olwazini olusezandleni ze-DHS, ngokuhambelana nemibandela ye-PAIA.

4. UMHLAMHLANDLELA WOKUTHI ISETSHENZISWA KANJANI I-PAIA (ISAHLUKO SE-10)

IKhomishani YaseNingizimu Afrika Yamalungelo EsiNtu (i-SAHRC), yenze umhlahlandlela ngokusetshenziswa kwe-PAIA, njengoba kumiswe yisahluko se-10 soMthetho. Umhlahlandlela uyatholakala emahhovisi e-SAHRC.

IHhovisi Eliyikomkhulu Likazwelonke
IKhomishane YaseNingizimu Afrika Yamalungelo EsiNtu
33 Hoofd Street
Forum III - Braampark
Braamfontein
Johannesburg, Gauteng
2014

Inombolo yocingo: +27 11 877 3600/3803
Inombolo yefeksi: +27 11 403 0625
Ikheli le-imeyli: paia@sahrc.org.za
I-website: www.sahrc.org.za

5. IMININGWANE YOKUXHUMANA

5.1. uMgcinilwazi (IO)

Njengoba kuhlinzekelwe eMthethweni, uMqondisi-Jikelele uyi-IO.
UMqondisi-Jikelele: uMnu. M Tshangana
Ucingo: +27 12 421 1486/1312/444 5246
Ifeksi: +27 12 421 2998
I-imeyli: InformationOfficer@dhs.gov.za

5.2. USekela Mgcinilwazi (i-DIO)

UMqondisi Omkhulu: Ukusekelwa Kwenhlangano uqokwe njengo-DIO, njengoba kuhlinzekwe isahluko se-17 (1) soMthetho.
USekela-Mgcinilwazi: UMnu. M Moerane
Ucingo: +27 12 444 9006
Ifeksi: +27 86 510 8601
I-imeyli: DeputyInformationOfficer@dhs.gov.za

5.3. Uphiko lwe-PAIA

UPhiko lwe-PAIA lenza ukuhlinzekwa kokufinyelela komphakathi olwazini lomnyango.
Ucingo: +27 12 444 9045/57/58
Ifeksi: 086 4711939
I-imeyli: paia@dhs.gov.za

5.4. Ulwazi jikelele

Ikheli leposi: Private Bag X644
PRETORIA
0001
Ikheli lendawo: Govan Mbeki House
240 Justice Mahomed Street
PRETORIA
0002
Ucingo: +27 12 421 1311
Ifeksi: +27 12 341 8512/+27 12 444 9000
I-imeyli: info@dhs.gov.za
I-webhusayithi: www.dhs.gov.za

6. UKUGUNYAZWA KOMTHETHO OKUNIKA ULWAZI IMISEBENZI YOMNYANGO

- UMthethosisekelo WaseRiphabhlikhi YaseNingizimi Afrika wonyaka we-1996
- UMthetho Wezezindlu wonyaka we-1997 (uMthetho we-107 wonyaka we-1997):
- Ukukhathula Indima Entsha. UHlelo Oluphelele Lokwakhiwa Kwezindawo Zokuhlaliswa Kwabantu Ezizimele
- UMthethosivivinyo Wofakwa Konke Kwezezindlu (wonyaka we-2007)
- UMthetho Ochitshiyelwe Wezinyathelo Zokuvikela Abathengi Bezindlu wonyaka we-2007 (uMthetho we-17 wonyaka we-2007)
- UMthetho We-ejensi Yokuthuthukiswa Kwezezindlu wonyaka we-2008 (uMthetho wama-23 wonyaka we-2003)
- UMthetho Wokuphathwa Kwezezimali Zomphakathi wonyaka we-1999 (uMthetho woku-1 wonyaka we-1999) nkengoba uchibiyelwe nguMthetho wama-29
- UMthetho Wezezindlu Zomphakathi wonyaka we-2008 (uMthetho we-16 wonyaka we-2008)
- UMthetho Wophiko Lwezentela wonyaka we-2015 (uMthetho woku-1 wonyaka we-2015) njengoba uchibiyelwe.
- UMthetho Wezindlu Zokuqashiswa wonyaka we-1999 (uMthetho wama-50 wonyaka we-1999)
- UMthetho Ochitshiyelwe Wezindlu Zokuqashiswa wonyaka we-2007 (uMthetho wama-43 wonyaka we-2007)
- UMthetho Wokudalula Imalimboleko Yezindlu Nezakhiwo we-2000 (uMthetho wama-63 wonyaka we-2000)
- UMthetho Wokuphathwa Kohlelo Lamatayitela Ezingxenye wonyaka we-2011 (uMthetho we-8 wonyaka we-2011)
- UMthetho Wezinsizo Zomlamuli Ohlelweni Lomphakathi wonyaka we-2011 (uMthetho wesi-9 wonyaka we-2011)
- UMthetho Wohlaka Lobudlelwano Phakathi Kohulumeni wonyaka we-2005 (uMthetho we-13 wonyaka we-2005)
- Umthetho Wokufuswa Ngokungekho Emthethweni wonyaka we-2000 (uMthetho we-19 wonyaka we-2000))
- UMthetho Wabathengisa Izindlu wonyaka we-1976 (uMthetho we-112 wonyaka we-1976)
- UHlelo Lukazwelonke Lwentuthuko

7. IMISEBENZI NESAKHIWO SOMNYANGO WEZOKUHLALISWA KWABANTU

7.1. UKUKHA PHEZULU OKUBALULEKILE

7.1.1. INHLOSOMBONO: Isizwe esihlala kuzakhiwo zabantu ezizimele.

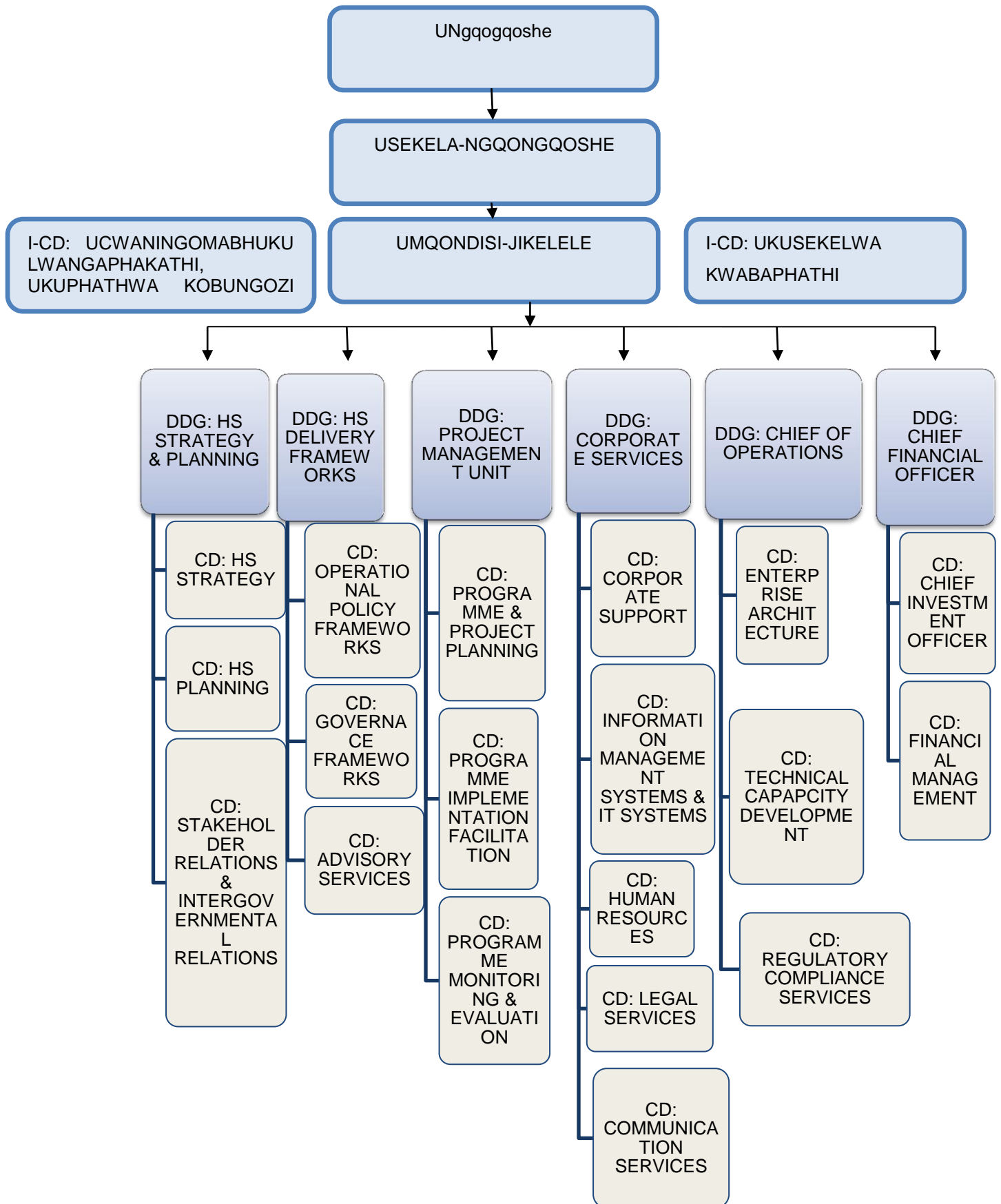
7.1.2. INsthisekelo: Ukugqugquzela ukwakhiwa kwezindawo zokuhlaliswa kwabantu ezizimele kanye nempilo yemindeni yekhwalithi engcono.

7.1.3. AMAGUGU:

Amagugu abalulekile ahola futhi alawule uMnyango asuselwa kuMthethosisekelo kanye namaqoqomthetho asekelayo futhi ambandakanya:

- Ukuziphendulela
- Ukungenzeleli nokulingana
- Ukuzikhethelela, ikhwalithi kanye nokukhona
- Ukuzimela
- Ukuqhamuka nokusha
- Imigomo ye-Batho Pele

7.2. UKWAKHEKA KOHLAKA LOMNYANGO



7.3. IZINSIZO EZITHOLAKALA KUMNYANGO

UMnyango ikakhulukazi:

- Usungula futhi unakekela inqubomgomo nohlaka lemithetho edingekayo ukuze kukhuthazwe inhloso yokuhlaliswa kwabantu okumbandakanyayo nokuzimele ngokuhambelana nenhloso kahulumeni kanye nokugunyazwa komnyango; futhi
- Uggugquzela ukwabiwa kwesabelo sonyaka sezifundazwe nomasipala ekuhlalisweni kwabantu, ekuthuthukisweni kwezingqalasisinda nasekutholakaleni komhlaba.

Ukwengeza endimeni edlalwa yizifundazwe nomasipala maaqondana nokuhlaliswa kwabantu, izikhungo ezilandelayo zikazwelonke zasungulwa ukuze zibhekane nezidingo ezihlobene nokuhlaliswa kwabantu zomkhakha:

Izikhungo:	Izinsizo:	Amaklayenti:	Thola ulwazi:
EBhodini Lemidanti Yabathengisa Izindlu (i-EAAB)	<ul style="list-style-type: none"> • Ilawula, inakekele futhi ikhuthaze amazinga okuziphatha kwabathengisi bezindlu ngokuhlonipha intshisekelo yomphakathi; • Ukunikeza ngezitifiketi zesikhwama sokwethembeka kubafakizicelo abafanele; • Ukube amazinga okuqeqeshwa kwanathengisi bezindlu; • Ukuphenya ngezikhalo zabathengisi bezindlu futhi ithathe izinyathelo zokuqondiswa kwezigwegwe zabathengisi bezindlu abanecala lapho kudingakala; futhi • Iphathe iphinde ilawule isikhwama sokuthembeka sabathengisi bezindlu. 	Abathengi bezindlu kanye nabathengisi bezindlu.	E-DHS, emahhovisi e-EAAB offices.
Usizo Lomlamuli Ohlelweni Lomphakathi (i-CSOS)	<ul style="list-style-type: none"> • Ukuhlinzeka ngosizo lokuxazulula izingxabano ohlelweni lomphakathi • Ukuhlinzeka ngokuqeqeshwa kwamakhansela, abahluleli kanye nabanye abasebenzi besiqoqelalwazi; • Ukulawula, ukuqapha nokuphatha imibhalo 	Inhlangano yomgwamanda wohlelo lomphakathi, ababikazi nabaqashi bamayunithi ohlelo lomphakathi.	I-DHS, ihhovisi i-CSOS.

Izikhungo:	Izinsizo:	Amaklayenti:	Thola ulwazi:
	<p>yokwenganyelwa kwekhwalithi yawo onke amatayitela ezingxenye; kanye</p> <ul style="list-style-type: none"> Nokugcina, kulondolozwe futhi kuhlinzekwe ukufinyeleleka emibhalweni yokwenganyelwa kohlelo 		
I-Ejensi Yokuthuthukiswa Kwezezindlu (i-HDA)	<ul style="list-style-type: none"> Ukuphawula, ukuthola, ukubamba, ukuthuthukisa kanye nokukhipha umhlaba nezakhiwo ezitu. Ukuhlinzeka ngokusekelwa kokuphathwa kwamaphrojekthi kanye nezinsizo zokuthuthukiswa kwezezindlu. 	Abathengi Bezindlu; Abathuthukisi nezinhlaka zombuso (oMasipala Namadolobhakazi).	I-DHS, i-PDHS, amahhovisi omasipala e-HAD.
UMkhandlu Kazwelonke Wokubhaliswa Kwabakhi Bemizi (i-NHBRC)	<ul style="list-style-type: none"> Ukulawula inkundla yokwakhiwa kwezindlu ngokusetsebenzisa izinqubo zokubhaliswa kwezindlu kanye nokubhaliswa kwabakhi bezindlu. Ukuvikela abathengi bezindlu ekulimaleni kwezakhiwo ngokuhlola izakhiwo kanye nokuphathwa kwezingodla zeziqinisekiso. Ukukhuthaza ubuchwepheshe obusha bokwakha izindlu; kanye Nokubekwa kwamazinga okwakha izindlu kanye nokwenza ngcono ukukhona kwabakhi bezindlu ngokubaqeqesha. 	Abathengi bezindlu kanye nabakhi bezindlu.	i-DHS, i-PDHS, amahhovisi omasipala be-NHBRC.
I-Ejensi Kazwelonke Yokuvuselelwa Kwezindawo Zasemadolobheni	<ul style="list-style-type: none"> Ukuhlinzeka ngezimali zokuvale amagebe phakathi kwenzikampani zabakhi ezincane, 	Izinkontileka nabakhi.	I-DHS, i-PDHS, amahhovisi omasipala e-NURCHA.

Izikhungo:	Izinsizo:	Amaklayenti:	Thola ulwazi:
Nezezindlu [i-NURCHA]	<p>ezimaphakathi nezithuthukile ezakha izindlu ezibiza kancane nezibiza kahle, kanye nezakhiwo nenzingqalasizinda ezihlobene nomphakathi; kanye</p> <ul style="list-style-type: none"> • Nokuhlinzeka ngezinsizakaloo zohlelo kanye nezokuphathwa kwesikhwamazimali; 		
INhlangano Kazwelonke Yezimali Zezindlu (i-NHFC)	<ul style="list-style-type: none"> • Ukunikeza ngezixazululo ezintsha nezingabizi zezimali zezindlu kumakethe zengeniso encane ukuya kwephakathi; • I-NHFC ihlinzekela ngezinsizakalo ezilandelayo: • Izimalimboleko zokuqasha kwangasese kwesikhathi eside, • Amafasilithi okuqashiswa Kwezindawo Zokuhlalisa Abantu, • Izimali zokuvala amagebe kubathuthukisi • Amafasilithi okuthenga izindlu okukhulayo • Amafasilithi asezitolo obunikazi bezindlu, • Izimali Ezixhumene Nohlelo Loxhasozimali Labantu Ngabanye (i-FLISP) 	Abantu abathola ingeniso ephansi, izikhungo zezindlu esezisungulwe, izikhungo zokuhlalisa kwabantu enhlalweni, abathintekayo ekuthengiseni abangewona amabhangeni kanye namabhangeni abolekisa izimali emindenini entulayo.	i-DHS, i-PDHS, omasipala; Amahhovisi e-NHFC
Isikhwama Semalimboleko Yezindlu Zasemaphandleni (i-RHLF)	<ul style="list-style-type: none"> • Ukuhlomisa imindeni ethola ingeniso encane ezindaweni zasemaphandleni ukuze ifinyeleleke kukhredithi yezindlu. • Sisebenza njengombolekisi wemali yokuthenga futhi ngakho-ke sifeza ukuthunywa kwaso ngokuhlinzeka 	Abaxhumanisi bokuthenga abangewona amabhangeni	I-DHS, i-PDHS, omasipala, amahhovisi e-RHLF.

Izikhungo:	Izinsizo:	Amaklayenti:	Thola ulwazi:
	izimalimboleko ngokusebenzisa abaxhumanisi kumakthe eqiindiwe ukuva isetshenziselwe izinhlos ezikhulayo zezindlu.		
Isiphathimandla Sokulawula Izindlu Enhlalweni (i-SHRA)	<ul style="list-style-type: none"> • Ukulawula umkhakha wezindlu zomphakathi eNingizimu Afrika • Ukwamukelwa, ukuphathwa nokukhokhwa kwezimali ezitshalwe izikhungo zokonga nezibonelelo ezinkulu (ezibizwa isiBonelelo Esikhulu Sokwakha Kabusha kanye nesiBonelelo Sokonga Kwezikhungo). 	Izikhungo Zokuhlaliswa Kwabantu, abathuthukisi bangasese.	I-DHS, i-PDHS, omasipala, amahhovisi e-SHRA.

7.4. IZINHLELO ZOMNYANGO

Uhlelo loku-1:	<p>Inhloso Ukuhlinzeka ngobuholi bamasu, ukuqashwa kokwengamela kanye nokusekelwa okubalulekile futhi nokukhuthaza ukuhlonishwa kwemithetho nokusebenza kahle komnyango nama-ejensi.</p> <p>Amasu Abalulekile:</p> <ul style="list-style-type: none"> • Ukuhlinzeka ngobuholi bamasu, ukuqashwa nokwengamela kokuzosetshenziswa nokusebenzayo: IHhovisi likangqongqoshe lihlinzeka ngokuqondiwa kobuholi nobenqubomgomo kuMnyango Wezokuhlaliswa Kwabantu; • Ukuphathwa kwezimali kanye nokukulawula kwangaphakathi okuzosetshenziswa nokusebenzayo: iHhovisi loMqondisi Jikelele lihlinzeka ngokuphatha jikelele kuMnyango Wezokuhlaliswa Kwabantu futhi liphathe ingozi yomnyango, ucwaningomabhuku lwangaphakathi kanye kanye nezinsizo zophenyo olukhethekile; • Ukuphathwa kanye nokusesekelwa kwemisebenzi, izinhlelo kanye nezinqubo (ezabasebenzi, ezokuxhumana, ucwaningomabhuku lezimali lwangaphakathi kanye nokusekelwa kwenhlangano nezinsizo zomthetho) ezizosetshenziswa nezisebenzayo kanye nokuqhubekisela phambili ngempumelelo inhlangano ebumbene nesimeme: IZinsizo Zenhlangano: zihlinzeka ngokunikeza kokusekela ngokokuphathwa kwezabasebenzi, kobuchwepheshe bolwazi nokuxhumana (i-ICT), Izinsizo Zomthetho, Izinsizo Zokuxhumana Nezokusakazakanye nokusekelwa kwenhlangano.
Uhlelo lwesi-2: INqubomgomo,	<p>Inhloso Luphatha ukwakhiwa kwezinqubomgomo namasu oKhuhlaliswa Kwabantu</p>

<p>Isu Nokuhlela Kokuhlaliswa Kwabantu</p>	<p>ukuze kwakhiwe futhi kusetshenziswa isixazululo sokulawula ngokuhambisanayo, ngokubikezelwayo nokusobala esikhuthaza ukufinyelela kalula ekulungisweni kwezinhlaka ezinganele zokwethulwa kokuhlaliswa kwabantu.</p> <p>Amasu Abalulekile:</p> <ul style="list-style-type: none"> • Ukwakha nokubukeza izinqubomgomo nezinhlelo ezikhuthaza futhi ziqinisekise ukuthi kukhona ukufinyeleleka okwanele kuzo zonke izindlu ezanele nakukhwalithi yenziwe ngcono yendawo yokuphila kanye nokuhlelwa ngempumelelo kwezinqumo zokuthuthukiswa kwendawo. • Ukubukeza, ukuqondanisa nokukusebenzisana kokuHlelwa Kokuhlaliswa Kwabantu phakathi kwezinhlaka ezintathu zikahulumeni ukuze kukhuthazwe ukuhlelwa ngempumelelo kwezinqumo zokuthuthukiswa kwendawo. • Ukukhuthaza ukuthuthukiswa kwezinhlaka zokuhlela kokuhlaliswa kwabantu; • Ukuthuthukiswa Kwamasu, okukhuthaza ababambe iqhaza kanye nokuhlinzeka ukwengamela ngokusebenzisana phakathi kwezinhlaka zikahulumeni nomikhakha. • Ukweluleka ngkumbandakanywa kwamaphojekhthi, ngokuqinisekiswa kwekhwalithi kanye nokuhlinzekwa kosizo ekomidini lephothifolo. • Ukuthuthukisa amasu, ucwaningo kanye nokuhlolwa kwe-HS izinhlelo zemiphumela engcono yoMnyango Wokuhlaliswa kwabantu.
<p>Uhlelo lwesi-3: UPhiko Lokuphathwa Kwezinhlelo</p>	<p>Inhloso Ukwakha, ukubheka, ukwesekela kanye nokuqashwa kokukhona komkhakha wezikhungo kanye namandla okwethula izinhlelo kanye namaphrojekhthi okuHlaliswa Kwabantu.</p> <p>Amasu Abalulekile:</p> <ul style="list-style-type: none"> • Ukwakha nokuqinisekisa ukukhona namandla okwenza nokwethula kweZindawo Zokuhlaliswa Kwabantu eziguquliwe kanye nokwenziwa ngcono komhlaba okuqondiwe • Ukwakha izinyathelo ezingqala zokwenza nokusetshenziswa kwezindawo zokuhlaliswa kwabantu ezizimele, ukuhlinzeka izindlu ezanele endaweni yempilo engcono yabo bonke abantu. • Ukuqalisa amaphrojekhthi aqinisekisa ukubandakanywa kwendawo, kwenhlalo nokomnotho • Ukuqapha nokuhlola ukwenziwa kanye nokwethulwa bahamkamaphrojekhthi nezinhlelo zoMnyango Wokuhlaliswa kwabantu ukuze kuhlolwe futhi kubikwe ngokufinyeleleka ezindlini ezanele endaweni yempilo engcono yabo bonke abantu.
<p>Uhlelo lwesi-4: Izimali Zokuthuthukiswa Kwezindlu</p>	<p>Inhloso Ukuhlinzeka ngezimali zokwethulwa kwezinhlelo zakho konke ukuHlaliswa Kwabantu ngokuhambisana nezinqubomgomo, ukuhlela namasu</p> <p>Amasu Abalulekile:</p> <ul style="list-style-type: none"> • Ukuphathaizibonelelo zeZezindlu Nokuhlaliswa kwabantu (i-USDG / HSDG) ngokuhambisana nezinhlaka ezamukelwe zezibonelelo;

	<ul style="list-style-type: none"> • Ukuqapha ukuhlelwa kwamaprojekthi nezinhlalo ezibalulekile okuhlaliswa kwabantu; kanye nezinhlalo zawo; • Ukuphatha ukuthuthuka kohlelo olulawulekayo olubukeziwe lwezisimali zezindlu. • Ukuqapha nokukhuthaza ukuqaliswa kwamaprojekthi nezinhlalo namaprojekthi nezinhlalo zokuhlaliswa kwabantu; • Ukuphatha ukuqashwa, ukubuyekezwa nokuhlolwa kwamaprojekthi, kwezinqubomgomo nezinhlalo zokuhlaliswa kwabantu.
Uhlelo lwesi-5: IHhovisi loMwondisiomkhulu Wezezimali	<p>Inhloso Ukuqapha ukuhlinzekwa kwensizo zokuphathwa kwezezimali.</p> <p>Amasu Abalulekile:</p> <ul style="list-style-type: none"> • Ukuphatha futhi nokuhlinzeka ngokusekela kwezinsizo kwezezimali; • Ukuhlinzeka jikelele ngezinsizo zesabelo zimali kanye nezokuphathwa kwzibonelelo; • Ukuphatha nokulungiselea imithombo yomkhakha.
Uhlelo lwesi-6: IHhovisi loMphathi Omkhulu Wemisebenzi	<p>Inhloso Ukuqapha ukuhlinzekwa kwensizakalo zemisebenzi yokuhlaliswa kwabantu</p> <p>Amasu Abalulekile:</p> <ul style="list-style-type: none"> • Ukuqapha ukwenziwa ngcono kwemisebenzi yokuhlaliswa kwabantu ngokusebenzisa ngempulelelo izinsizakalo zezinhlaka zamabhizinisi ngempumelelo. • Ukuphatha ukuthuthuka kwekhono lobuchwepheshe emkhakheni wesokuhlaliswa kwabantu. • Ukuzinisekiswa ukulawula kokuhlonishwa komthetho kumnyango nakumkhakha. • Ukuhlinzeka ngokuphathea kokuqashwa kwezinhloko zezezindlu, kubandakanya ukuqapha, ukuhlaziya nokubika ngensebenze yezezimali nengeyona yezezimali kanye nokwengamela ngokubambisana.

8. UKUFINELELA KUMAREKHODI AGCINIWE NGUMNYANGO

Amarekhodi athile, kubandakanya amazerekhodi ngokwenza isicelo, atholakala ngokuzenzakalelayo ngaphandle kokuba umuntu enze isicelo sokufinyeleleka kuwo ngokwe-PAIA. Amanye amarekhodi agcinwe yi0DHS afanele acelwe ku-DIO ngokwezinkambiso ezichazwe kusahluko se-11 nese-18 se-PAIA.

8.1. IZINHLA ZAMAREKHODI AGCINIWE NGUMNYANGO

Amarekhodi eDHS aphethwe ngokuhambelana nemibandela kanye nezidingo zoMthetho Kazwelonke Wezinqolobane WaseNingizimu Afrika wonyaka we-1996 (uMthetho wama-43 wonyaka we-1996). Amarekhodi ezigaba ezingezansi atholakala ngokungokuhambelana nohlelo olamukelwe lokufayila lase- DHS. Amanye amarekhodi ezibalwe izigaba ezingezansi angacelwa ngokusemthethweni, kodwa ukufinyeleleka kuzingxenywe zalawa marekhodi noma kuwo wonke amarekhodi kungaliwa ngenxa yemibandela ye-PAIA njengoba kushiwo kusahluko sama-33 ukuya kwesama-45.

* Amarekhodi atholakala ngokuzenzakalelayo: Amarekhodi angafinyeleleka ngaphandle kokuba kufakwe isicelo ngokwe-PAIA njengoba kushiwo kusahluko se-15(1)(a) se-PAIA.
 * Atholakala ngesicelo: Amarekhodi angafinyeleleka ngokuthi kulandelwe izinqubo njengoba zishiwo kusahluko se-11 nese-Se-PAIA; ukufinyeleleka kulawa marekhodi kungaliwa ngenxa yesahluko sama-33 ukuya kwesama-45 se-PAIA

Inombolo	Isihloko	Uhla	Atholakala ngokuzenzakalelayo*	Atholakala Ngesicelo*
8.1.1.	UHLAKA LEMITHETHO NOKULAWULA	Iqoqomthetho loMnyango Wezokuhlaliswa Kwabantu (iMithethosivivinyo/iMithetho/Izimisano Nezibophezelo Zamazwe Ngamazwe)	Yebo	Cha
		Ukuguqulwa komkhakha (izinhlelo, izincomo kanye nokuphathwa kwasenhlalweni nokogquko)	Cha	Yebo
8.1.2.	UKUHLELA NOKULAWULA	Izinqubomgomo zangaphakathi.	Cha	Yebo
		Ukuphathwa kwengozi.	Cha	Yebo
		Uhlaka Lwenqubomgomo Yokulwa Nenkolakalo Nenkoliso.	Cha	Yebo
		Ucwaningo-mabhuku lwangaphakathi.	Cha	Yebo
		Izinyathelo nemibiko yokuphathwa kwenhlekele.	Cha	Yebo
		IMibiko Yonyaka YoMnyango Wezokuhlaliswa Kwabantu; Uhlaka Lwamasu Lamaphakathi Nonyaka Lokuhlaliswa kwabantu (i-MTSF 2014-2019); Izinhlelo Zamasu; Izinhlelo Zokusebenza Zonyaka	Yebo	Cha
		Imidanti yezempilo nokuphepha emsebenzini.	Cha	Yebo
		Ukuphathwa kokuphepha	Cha	Yebo
8.1.3.	UKUPHATHA EZABASEBENZI	Imidanti yokulawulwa kwezikhala zomsebenzi, ukuzisungula nemidanti yokuhlela	Cha	Yebo
		Amathuba emisebenzi, ukuqokwa nokubekwa emsebenzini.	Cha	Yebo
		Amarekhodi abasebenzi/ezempilo zabasebenzi kanye namafayela ehlalakahle	Cha	Yebo

Inom bolo	Isihloko	Uhla	Atholakala ngokuzenzakalelayo*	Atholakala Ngesicelo *
		yabasebenzi.		
		Ukugcinwa kwabasebenzi.	Cha	Yebo
		Ukuthuthukiswa kwabasebenzi (izinhlelo, ukuxoxisana, izinhlelo zamakhono nezolwazi, amalenashiphu, imifundaze, ukubambiisana, nemibiko).	Cha	Yebo
		Ukulela, ukusebenzisa, ukulawula nokuqapha (izinhlelo ze-HR, izaziso, ukusetshenziswa kwamalivu, isikhathi esengeziwe sokusebenza, imidanti enhlalweni, ukuhamba nokunyakaza, kanye Ukuqedwa kokusebenza kanye nokushiya). Ukuphathwa nokuthukiswa kokusebenza	Cha	Yebo
		Imidanti yokusebenza nobudlelwano bezabasebenzi.	Cha	Yebo
		Izinhlelo nemibiko yoguquko enhlanganweni (uKulingana Emsebenzini; iBatho-Pele; Ukuphathwa koguquko lokwengamela kahle kanye Nezempilo Nenhlalakahle Yabasebenzi).	Cha	Yebo
		Ukuguqulwa kwenhlangano (izinhlelo, izincomo kanye nokuphathwa kwasenhlalweni nokoguquko).	Cha	Yebo
		Ukudluliswa kwamandla/kwegunya.	Cha	Yebo
		Imidanti yokusungulwa. (Uhlaka Oluncane).	Cha	Yebo
		Imidanti yokusungulwa .Uhlaka Olukhulu).	Yebo	Cha
8.1.4.	IMIDANTI YEZEZIMALI	Imibiko Yohlelo Oluyisisekelo Lokugcinwa Kwama-akhawunti	Cha	Yebo
		Isabelozimali (Ukulinganiswa Kwezindleko Zikazwelonke Zokuhlaliswa Kwabantu)	Yebo	Cha

Inom bolo	Isihloko	Uhla	Atholakala ngokuzenzakalelayo*	Atholakala Ngesicelo*
		Ukuhlonishwa kwemithetho yezezimali (UsiKhwama, uMcwaningi-Mabhuku-Jikelele kanye nemibiko).-	Yebo	Cha
		Ucwaningo-mabhuku ezimali.	Yebo	Cha
		Amakleyimu (izinkokhelo eziphakathi kohulumeni)	Yebo	Cha
		Uhlelo labakweletayo.	Cha	Yebo
		Izibonelelo zesikhashana kanye nokuphathwa kwezimali (ukwabiwa, ukudlulisa, ukuqapha kanye nokuhlaziya, ukulahlekelwa nemibiko ethile).	Yebo	Cha
		Imidanti yasebhangi.	Cha	Yebo
		Ukungabi kahle kwezezimali.	Yebo	Cha
		Ukubhalanswa kwezimali kuma-akhawunti.	Cha	Yebo
		Usizo lwezezimali (iminikelo noma imixhaso).	Yebo	Cha
		Ama-invoysi, izitatimende nokukhokha.	Cha	Yebo
		Amaresidi agaywe ngomshini.	Cha	Yebo
		Amarekhodi okusekela ukugcinwa kwama-akhawunti.	Cha	Yebo
		Amajenali amathransekhshini.	Cha	Yebo
		UUhlelo lokwahlulwa kwezezimali	Cha	Yebo
		Amashidi okukhokha.	Cha	Yebo
		Amafomu atholakala kuqala, iziqinisekiso zamavawusha namasheke.	Cha	Yebo
		Amarejista (kumbandakanya umholo, i-invoice nenkokhelo).	Cha	Yebo
8.1.5.	UKUPHATHWA KWEKETANGA LOKUTHENGA	Izitatimende zezezimali.	Yebo	Cha
		Imidanti yokulawula ukulahlekelwa	Cha	Yebo
		Amanothi okusebenza (isibonelelo Sokuthuthukiswa kwe-HS (i-HSDG))	Cha	Yebo
		Okufunwayo kanye nokutholakele (amakhotheshini, izicelo	Cha	Yebo

Inom bolo	Isihloko	Uhla	Atholakala ngokuzenzakalelayo*	Atholakala Ngesicelo*
		ezisemthethweni nokutholakale).		
		Amabhidi (iziphakamiso, izincaciso, izikhangiso; ukwabiwa namakomiti).	Cha	Yebo
		Izinhlelo Zokutholakele Nokuthengwa.	Cha	Yebo
		Amarejista (kubandakanya amabhidi, amarekhodi eminingo yabaphakeli, irejista yokukhokha, amaphepha okulawulwa kwesitokwe, i-invoysi, impahla kanye uhlu lwempahla).	Cha	Yebo
		Ama-oda kanye nezinkokhelo (izinhlelo, ama-invoysi, ama-SLA, ukuhlolwa kwesitokwe ekutholakaleni kohlu lwempahla (izinhlelo), okutholakele).	Cha	Yebo
		Ukuphathwa kwempahla (ukwabiwa, ukugcinwa, ukulahlwa, ukuhlolwa kanye nemibiko; amaphepha okulawula kwesitokwe, impahla kanye nohlu lwayo).	Cha	Yebo
8.1.6.	IZINSIZO ZOKUHAMBA NEZOKUTHUTHA	Izinkambo zasekhaya neziya kude.	Cha	Yebo
		Ezokuthutha (izimoto eziqashiwe nezikahulumeni)	Cha	Yebo
		Ama-logshidi	Cha	Yebo
8.1.7.	UKUPHATHWA KWEMPAHLA	Izakhiwo, Izinkundla Nempahla (ukuphawulwa nokuhlaziywa kwezidingo, ukuhlela nokudizayina, ukutholakala namalisi amahhovisi kanye nendawo esemthethweni yokuhlala, ukwabiwa, ukunakekelwa nokugcinwa kanye nokubekelwa eceleni).	Cha	Yebo
		Imishini namathuluzi kanye nezinye izinto (lokho okubgena ngaphansi "kwamanye amafasilithi" (ukufakwa, ukulungiswa nokunakekelwa).	Cha	Yebo
		Ukusebenza kahle nokuwagcinwa kwamandla (Uhlelo, ukuphathwa, ukuhlola nemibiko).	Cha	Yebo

Inom bolo	Isihloko	Uhla	Atholakala ngokuzenzakalelayo*	Atholakala Ngesicelo*
		Izivumelwano Zamazinga Omsebenzi, Ukunakekela, ukuqapha, ukuhlola nemibiko (Kagesi, Yamapayipi, Yokulawulwa Kwezinambuzane, Izinsizakalo Zokuhlazeka kanye neZinsizakalo Zokuhlaza).	Cha	Yebo
8.1.8.	IZINSIZO ZOLWAZI	Ukukhuthaza Kokufinyeleleka Kolwazi (Imibiko Yesahluko sama-32; iManuwali ye-PAIA; Uhlu Lwesahluko se-15).	Yebo	Cha
		Ukuphathwa Kolwazi.	Cha	Yebo
		Amamanuwali e-PAIA	Yebo	Cha
		Ukuphathwa komtapo wolwazi.	Cha	Yebo
		Ukuphathwa kwamarekhodit (iziNhlelo zamafayela, isheduli yamarekhodi ngaphandle kwamafayela okubhalelana, okudluliswa, ukulahlwa, emibiko namarejista ehovisi lokubhalisa).	Cha	Yebo
		Ukuphathwa kokuphepha	Cha	Yebo
		Imidanti yezempilo nokuphepha emsebenzini.	Cha	Yebo
		Izicelo Zendawo Ye-HSS (uHlelo Loxhaso Lwezindlu, Irejista Kazwelonke Yezidingo Zezindlu kanye Nemininingo Kazwelonke Yoxhaso Lwezindlu) Izinsizakalo Zokulungisa, Zokwesekwa Nokuqeqeshwa ezihlinzekwa Izindawo Zokuhlaliswa Kwabantu Zezifundazwe.	Cha	Yebo
		Ukuthuthukiswa Nokusekwa Kwemisebenzi Yezingqalasizinda kuMnyango Kazwelonke Wezokuhlaliswa Kwabantu	Cha	Yebo
		Izinhlelo Nezisetshenziswa Zolwazi ezisekela izinqubo nezinhloso zebhizinisi	Cha	Yebo

Inom bolo	Isihloko	Uhla	Atholakala ngokuzenzakalelayo*	Atholakala Ngesicelo*
		IoMnyango Wezokuhlaliswa kwabantu		
8.1.9.	UKUXHUMANA	Isu Lokuxhumana.	Cha	Yebo
		I-Logo/uphawu IoMnyango	Cha	Yebo
		Isikhungo Sezincingo Sokunakekelwa Kwamakhasimende kanye memidanti yoCingo Losizo Olusheshayo LukaMongameli.	Cha	Yebo
		Imibiko Yabezokusakaza.	Yebo	Cha
		Amaphrofayili Eziphathimandla Ezikhulu	Yebo	Cha
		Imicimbi, imikhankaso, izinhlelo zokwethula kanye nokubonakala (kubandakanya izinkulumo zikaNgqongqoshe nezikaSekela-Ngqongqoshe kanye nezithombe.	Yebo	Cha
		Okushicilelwe Komnyango; Amabhrosha; Amanyuziletha; Amaphephandaba Namaphosta).	Yebo	Cha
		Amathuba ezomnotho oMnyango Wezokuhlaliswa Kwabantu (ngezilimi eziyi-11ezisemthethweni).	Yebo	Cha
		Izinhlelo Nezinqubo Zokuhlaliswa Kwabantu (ngezilimi eziyi-11ezisemthethweni).	Yebo	Cha
		Iminyak eyi20 yokuHlaliswa Kwabantu.	Yebo	Cha
		Ukuqashwa Kwezokusakaza e-DHS (Iziqeshana Zezindaba amakopi ezikhangisi zokusakaza/ Amakopi ochungechunge lukamabonakude i-BNG olusakazwa ku-SABC 2).	Yebo	Cha
		umthetho ohlongozwayo ngokuhlaliswa kwabantu.	Yebo	Cha
		Isivumelwano Sasenhlalweni Zokuthuthukiswa Kokuhlaliswa Kwabantu	Yebo	Cha
		Idayari Yenhlangotho yoMnyango Wezokuhlaliswa Kwabantu	Yebo	Cha
		Umhlahlandlela wokuba nguMnikazi Wendlu Exhaswe Nguhulumeni.	Yebo	Cha

Inombolo	Isihloko	Uhla	Atholakala ngokuzenzakalelayo*	Atholakala Ngesicelo*
8.1.10	IZINSIZO ZOMTHETHO	Ukuqokwa kochwepheshe bezomthetho.	Cha	Yebo
		Imibono yezomthetho.	Cha	Yebo
		Amakleyimu, ukuboshiswa nezicelo zokukhalaza.	Cha	Yebo
		Ukushushiswa kubandakanya ukwethulwa kwemibhalo yokufunwa kwezinxephezelo zomthetho.	Cha	Yebo
		Izivumelwano, amamemorandamu okuvumelana kanye nezivumelwano zamazinga omsebenzi.	Cha	Yebo
		Iqoqomthetho loMnyango Wezokuhlaliswa Kwabantu [iMithethosivivinyo/iMithetho/Izimisiso Nezibophezelo Zamazwe Ngamazwe]	Yebo	Cha
8.1.11	IMIHLANGANO, UKUHAMBELA KANYE NOKUSINGATHA IMICIMBI	Imihlangano yabaphathi, yenhlangano kusifundazwe kanye neyezizinda zomkhakha (kumbandakanya, ukuqokwa kwabantu kumapaneli ukuze beluleke ungqongqoshe, amalungiselelo, ama-ajenda, amaminithi nemibiko).	Cha	Yebo
		Amamemorandamu ekhabhinethi	Cha	Yebo
		Ikomidi lephothifolo kanye nemibuzo/izimpendulo.Portfoli o Committee and questions/replies.	Cha	Yebo
		Izimpendulwe Ezamukelwe Yiphalamende.	Yebo	Cha
8.1.12	UKUQAPHA, UKUKUHLOLA KANYE NOKUHLOLA UMTHELELA	Imidanti yezinhlelo zokuqapha, ukuhlola kanye nokuhlola umthelela	Cha	Yebo
		Ukuhlola, ukuhlola kwemithelela kanye nemibiko yokuqapha (kumbandakanya: umthelela, ukusebenza, ukuqashwa kwamaphrojekhthi kanye nocwaningomabhuku lokuhlala kwabazuzayo).	Cha	Yebo
		Ukuhlolwa komthelela woHlelo Lwezezindlu Zasemaphandleni.	Yebo	Cha
		Ukuhlolwa Kokusebenza KweZinhlelo Zezindlu	Yebo	Cha

Inom bolo	Isihloko	Uhla	Atholakala ngokuzenzakalelayo*	Atholakala Ngesicelo*
		Enhlalweni Neziqashiswayo.		
		Ukukala impumelelo yentuthuko yoKuhlaliswa Kwabantu: ucwaningo lokuhlolwa komthelela wokwenziwa ngcono kohlelo lwemijondolo kumaphrojekthi akhethekile eNingizimu Afrika.	Yebo	Cha
		Ukuthuthukiswa koKuhlaliswa Kwabantu Okungahlelekile.	Yebo	Cha
		Ukuhlolwa kwezinga lomphumela wesi-8 Okuvelayo koku-1.	Cha	Yebo
		Ulwazi lwendawo nokungelona olwendawo.	Cha	Yebo
		Ukutholakala nokuphathwa kwedatha (imijondolo, amanani okwethulwa, ukulungiswa, ukwethula kuphrojekthi ngayinye kanye namaphrojekthi amisiswe) .	Yebo	Cha
		Inqubomgomo Yokuqapha, Ukuhlola kanye Nokuhlolwa Komthelela kanye Nohlaka Lokusetshenziswa Lomkhakha WezokuHlaliswa Kwabantu.	Yebo	Cha
		Ukuqashwa, Ukuhlolwa kanye Nokuhlolwa Komthelela konyaka we-2013/14 ukuya kowe-2018/19: Inqubomgomo kanye Nohlaka Lokusetshenziswa Lomkhakha WezokuHlaliswa Kwabantu.	Yebo	Cha
		Uhlelo Lokusetshenziswa Lwendawo: UMnyango Weifundazwe Wokuhlaliswa Kwabantu: 2015 -2020	Yebo	Cha
8.1.13	USIZO NOCWANINGO LOKUTHUTHUKISWA KWENQUBOMGOMO	Ikhodi kazwelonke yezindlu 2009.	Yebo	Cha
		Uhlelo Oluphelele Lokwakhiwa Kwezindawo Zokuhlaliswa Kwabantu Okuzimele konyaka we-2004.	Yebo	Cha
		Izimali Ezixhumene Nohlelo Loxhaso Labantu Ngabanye (Inqubomgomo i-FLISP).	Yebo	Cha
		Uhlaka lwenqubomgomo Yabesifazane Nentsha (Uhlaka Lwenqubomgomo).	Yebo	Cha

Inom bolo	Isihloko	Uhla	Atholakala ngokuzenzakalelayo*	Atholakala Ngesicelo*
		Imibiko Yokuhlaliswa Kabantu, Ukubhekwa Nokuhlaziywa Kwendawo (Ukuhlaziywa Kwemikhuba Yezomnotho Nezimakethe).	Yebo	Cha
		Inqubomgomo Yenqubo Yokuhlaliswa kwabantu.	Yebo	Cha
		Ucwaningo (Iubandakanya imibiko)	Cha	Yebo
8.1.14	UKUHLELWA KOMKHAKHA WOKUHLALISWA KWABANTU	Ukuhlela kukazwelonke (Izinhlelo Zokuthuthukisa Okumnyaka-Mningi Zezezindlu, Izinhlelo Ezimbandakakayo Zokuthuthukisa Kokuhlaliswa Kwabantu kanye neZinhlelo Zezibonelelo Zesikhashana Zamabhizinisi)	Cha	Yebo
		Ukuhlela kwezifundazwe (kubandakanya iZinhlelo Zesifundazwe Zokuthuthukisa Kokuhlaliswa Kwabantu Okumnyaka-Mningi, Izinhlelo Zamabhizini, Amathuluzi nemibiko).	Cha	Yebo
		Ukuhlela komasipala (kubandakanya izinhlelo ezimbandakanyayo zentuthuko, iZinhlelo Zezibonelelo Zokuhlaliswa kabantu Emadolobheni, iZinhlelo Zokusebenza Kwezindawo Ezakhiwe, aMasu nezinhlelo Zokuhlaliswa Kwabantu, imidanti yokusungulwa kwamalokishi, ukuqinisekiswa nemibiko yomasipala	Cha	Yebo
		Ukusetshenswa kwamaphrojekthi abekwe phambili athola izimali kuzwelonke nesezifundazweni.	Cha	Yebo
8.1.15	UKUSEKELWA NOKUQASHWA KOKUSETSHENZWA KWEZINHLELO	Amaphrojekthi amisiwe.	Cha	Yebo
		Ukuthuthukiswa kwezindawo zokuhlaliswa kwabantu eziyimijondolo (kubandakanya izinhlelo, ukusebenza,	Cha	Yebo

Inom bolo	Isihloko	Uhla	Atholakala ngokuzenzakalelayo*	Atholakala Ngesicelo*
		ukuhlela kanye nokusekelwa).		
		UMhlahlandlela Wenqubo Yamaphrojekhthi Ezezindlu	Yebo	Cha
		Ukuhlelwa Kwamaphrojekhthi Amasha Okwenza Lula	Cha	Yebo
		Ukukhuthazwa Kokuhlelwa Kwamaphrojekhthi Kazwelonke Okuhaliswa Kwabantu emadolobheni/ezindaweni zezimayini.	Cha	Yebo
8.1.16	IZINHLELO ZOKULUNGANA NEZIBEKWE PHAMBILI	Imibiko yonyaka ngamaphethini okuboleka izimali zezindlu.	Yebo	Cha
		Imidanti yokulingana (izikhungo zezezimali)	Yebo	Cha
		Incwajana Yehhovisi Lokudalula Imanuwali Yenqubo Yokuphathwa Kwezikhazazo (izilimi eziyi-8: isiNgesi; isiBhunu; isiZulu; i-Sepedi; i-Setswana; isiXhosa; i-Xitsonga ne-Tshivenda).	Yebo	Cha
		Imalimboleko yezindlu nezakhiwo.	Yebo	Cha
8.1.17	IZINHLELO NEZINQUBO ZOKUHLALISWA KWABANTU	Izinhlelo Zokuqasha Ekuhlalisweni Kwabantu: Umbiko Wocwaningo wonyaka we-2007, Abanolwazi Lomkhakha Wokuqashiswa Kwendawo Yokuhlala kanye Nomthelela wonyaka we-2015 kanye Nohlelo Nokusetshenziswa Kokuhlola Kohlelo Lokuhlaliswa Komphakathi.	Cha	Yebo
		Ukwenziwa kwamaphrojekthi angasese nawokuqasjisa: UHlelo Lukazwelonke Lwezezindlu Lokuhlinzekwa Kwezinsizo Eziyisisekelo Kubantu Abahlala Ngemuva Kwendlu kanye Nezimiso ZaseGauteng Zokuhlaliswa Kwabantu Ngemuva Kwezindlu.	Cha	Yebo
		Ezezindlu Enhlalweni: UMthetho Wezezindlu Zomphakathi we-16 wonyaka we-2008, Umhlahlandlela Wenqubomgomo Yokuhlaliswa	Yebo	Cha

Inom bolo	Isihloko	Uhla	Atholakala ngokuzenzakalelayo*	Atholakala Ngesicelo *
		Komphakathi kanye NeZimiso Zokuhlaliswa Komphakathi.		
		Izizinda zokuxoxisana.	Cha	Yebo
		Ukusekelwa kwabaqashi	Cha	Yebo
		Ukuhlaziya, Ukuhlola, Ukuqapha, Ukubuyekeza, Imibiko Nezibalo Ngamaphrojekhthi Nezinhlalo Zokuqashisa.	Cha	Yebo
		Imidanti yokusungula emayelana nezikhungo nezinhlangano zezezindlu (iMitthetho Evumela Izinhlango, iMemorandamu Yokubandakanywa.	Cha	Yebo
		Imidanti yebhodi lezinhlango (aMagama amalungu ebhodi, isikhathi sokuba sesikhundleni, iziVumelwano Zabaninimasheya, iMibhalo yokugunyazwa, uSomqulu Webhodi kanye Nemibandela Okubukwa kuyo, imibiko Yokuhlola Kwebhodi, izimali zokubonelela)	Cha	Yebo
		Izinhlalo/umbiko wenhlango (iZinhlalo Zamasu, iZinhlalo Zonyaka Zokusebenza)	Cha	Yebo
		Ukuqapha nokubuyekeza kwezinhlangano (iMibiko yekota kanye Nemibiko Yonyaka)	Cha	Yebo
		Ukungenelela (Ukuqokwa, iZikhalazo kanye Nezixazululo).	Cha	Yebo
		Ucwaningo (lumbandakanya iMibiko)	Cha	Yebo
		Ukusetshenswa kwamaphrojekhthi abekwe phambili athola izimali kuzwelonke nesezifundazweni.	Cha	Yebo
		Uhlelo Lomphakathi Lasekuhlaleni (i-CRU).	Yebo	Cha
		Ulwazi lwesabelozimali kanye nokudluliswa kwezimali (Isabelozimali sonyaka, Ulwazi lwe-MTEF, ukwabiwa kwzibonelelo nokudluliswa kwezimali)	Cha	Yebo

Inom bolo	Isihloko	Uhla	Atholakala ngokuzenzakalelayo*	Atholakala Ngesicelo*
8.1.18	UBUDLELWANO NOKUKHUTHAZWA KOKUSETSHENZISWANA NABO	Ukuxoxisana, ukubambisana nokuxhumana (kubandakanya imidanti emayelana nohulumeni, ukubambisana kwamazwe omhlaba nokuxoxisana kwamazwe amaningi).	Cha	Yebo
		Imiklomelelo Yezindlu kaGovan Mbeki.	Yebo	Cha
		Amaphrojekthi Okuxhaswa Kokuhlaliswa Kwabantu.	Cha	Yebo
		Inqubo Yokuhlaliswa Kwabantu (ibandakanya iZikweletu Ezindala, Ukwethulwa Ukuqaqululwa Kwamaphrojekthi e-PHP, Ukubambisana kanye nemidanti yokuxazululwa kokushayisana).	Cha	Yebo
		Ubudlelwane Bamazwe Omhlaba (Uzinkambo Zocwaningo, Izivumelwano Eziphakathi Kwamazwe Amabili).	Cha	Yebo
		Amasemina, izinkomfa, izingxoxiswano nemihlangano yokucobelelana ngolwazi (kubandakanya imikhankaso nemihlangano yokucobelelana ngolwazi).	Yebo	Cha
		Izinhlelo zokugxila kwinqubomgomo (kubandakanya ukusetshenziswa nokubambisana).	Cha	Yebo
8.1.19	UKUTHUTHUKISA KWAMAKHONO OKUHLALISWA KWABANTU	Ukuhlonyiswa kwabahlomulayo kanye nomphakathi (kubandakanya ukusetshenziswa nokubambisana, ukuhlola, ukuqapha nokubuyekeza).	Cha	Yebo
		Ukusetshenzwa ngolwazi komkhakha we-HS (kubandakanya izinhlelo zamabhezini, ukuqinisekiswa kokufaneleka ngokwemfundo kanye nemidanti emayelana nabahlinzeki kanye nezikhungo zokuqeqesha, kanye nokuphathwa	Cha	Yebo

Inom bolo	Isihloko	Uhla	Atholakala ngokuzenzakalelayo*	Atholakala Ngesicelo *
		kwemigwamanda yolwazi ye-HS).		
		Imifundaze ye-HS (kubandakanya inqubomgomo yezicelo nokwabiwa, uqashelwa nokuhlolwa).	Cha	Yebo
		Ukuthuthukiswa kokukhona kwezikhungo (kubandakanya izinhlelo zamabhizinisi, imidanti emayelana nokuhlelwa, izinhlelo zezifundazwe zokusetshenziswa nokusekela kanye nezokuqapha nokubuyekeza).	Cha	Yebo
		Isu Likazwelonke Lokukhuliswa kwamandla Entuthuko Yobuchwepheshe.	Cha	Yebo
		Uhlelo Lokusekela Lwentuthuko Yobuchwepheshe LweNingizimu Afrika ne-Cuba.	Cha	Yebo
		Uhlaka Lokudluliselwa Kwamakhono.	Cha	Yebo
		Imanuwali Yokufundisa Abasebenzi Bezindlu.	Yebo	Cha
		Imanuwali Yokuqeqesha Amakhansela (i-DHS ne-SALGA).;	Yebo	Cha
		Ukungeniswa Ekuphathweni Kwezokuhlaliswa Kwabantu	Yebo	Cha

9. INKAMBISO YOKUCELA UKUFINYELELEKA KOLWAZI

UPhiko lwe-PAIA luthola izicelo zokufinyeleleka kolwazi egameni luka-DIO futhi lusiza nanoma ngabe ubani ofuna ukufaka isicelo.

Yonke imibuzo mayelana nokufakwa kwesicelo sokufinyeleleka kolwazi kanye nokufakwa kwezicelo zokufinyeleleka kuMnyango Wezokuhlaliswa Kwabantu ifanele yenziwe ngokuvakashela uPhiko lwe-PAIA ku-Justice Mahomed Street noma ngefeksi ku-086 402 7628 noma ngokushayela ucingo uPhiko lwe-PAIA ku-(012) 444 9045/57/58 noma ngokubhalela i-imeyili ku-paia@dhs.gov.za.

9.1. UBANI ONGAFKA ISICELO SOLWAZI?

- Noma yimuphi umuntu angenza isicelo ulwazi.
- Abafakizicelo abacela ulwazi olumayelana nabo uqobo.
- Abafakizicelo abacelela omunye umuntu ulwazi. (Umfakizicelo owenza lokhu ekwenzela omunye umuntu ufanele abe nencwadi emgunyaza.

9.2. INDLELA YOKUFINYELELEKA KOLWAZI

9.2.1. AMAREKHODI ATHOLAKALA NGOKUZENZAKALELAYO

Izinhlaka ezithile zamarekhodi zingatholakala ngokuzenzakalelayo ngaphandle kokuba umuntu awacele ngezinqubo ze-PAIA ngokwemibandela yesaHluko se-15(1)(a) soMthetho. Ulwazi/amarekhodi atholakala ngokuzenzakalelayo azokwenziwa ukuba atholakale ngendlela kagesi ku-website yomnyango kanye nasemahhovisi omnyango ngendlela noma ngohlobo oluceliwe, uma lokhu kungafaneleka futhi kukhoneke.

9.2.2. IZICELO ZOCINGO

I-DHS futhi yemukela ukudluliswa kwezicelo ngocingo. Ukunaka kuyonikezwa izicelo ezinjengalesi esenziwe ku-DIO noma enombolweni yocingo yoPhiko lwe-PAIA ngokusebenzisa izinombolo enikezwe kule manuwali. Izikhulu zoPhiko lwe-PAIA zizogcwalisa uFomu A omisiwe zimgcwalisele umfakisicelo futhi zimnikeze ikopi yalo ngokunjalo.

9.2.3. IZICELO ZOMLOMO

Uma umuntu engakwazi ukugcwalisa ifomu elimisiwe ngenxa yokungakwazi ukufunda noma ukuba nokukhubazeka, umuntu ofana nalona angasenza isicelo ngomlomo ku-DIO.

U-DIO we-DHS uzofingqa isicelo esenziwe ngomlomo asibhale phansi efomini elimisiwe futhi anikeze ikhophi yalo ngokunjalo umfakisicelo.

9.3. IZICELO EZISEMTHETHWENI NGOKWEZIDINGO ZE-PAIA

ISINYATHELO SOKU-1: Ukugcwalisa ifomu elimisiwe lesicelo sokufinyeleleka

- Thola ifomu lesicelo elimisiwe, uFomu A oqukethwe kusiXhumelo B sale manuwali, ophinde atholakale kwi-website yase-DHS noma emahhovisi e-DHS ngesicelo.
- Gcwalisa ifomu elimisiwe ngokugcwele futhi ngokucacile usho irekhodi noma amarekhodi acelwayo futhi usayinde ifomu lesicelo esikhaleni esinikiwe.
- Uma isicelo senziwelwa omunye umuntu, umfakisicelo kufanele anikeze ubufakazi bokuthi isicelo usenza engubani kuze kwaneliseke u-DIO.

ISINYATHELO SESI-2: Ukukhokha

Umfakisicelo ufanele akhokhe imali ebekiwe yesicelo nokufinyeleleka uma ifanele ikhokhwe futhi uma eceliwe ukuba enze lokho ngokukhokha idiphozi kwinombolo ye-akawunti enikezwe ngezansi. Abantu abafakwe ohlwini olusesigabeni 9.5.4 sale manuwali badedelwe ekukhokheni izimali zesicelo.

INDLELA YOKUKHOKHA

Igama le-akhawunti	UMnyango Wezokuhlaliswa Kwabantu
Ibhange	Standard Bank
Inombolo Ye-akhawunti	010160310
Igama legatsha	Pretoria, Van der Walt Street
Branch code	010145
Ireferensi	UMthetho Wokuqhutshekeliswa Phambili Ukufinyeleleka Kolwazi

ISINYATHELO SESI-3: Ukufakwa kwesicelo

Umfakisicelo ufanele afake ifomu lesicelo ku-DIO oPhikweni lwe-PAIA ekhelini, kwinombolo yefeksi, noma ku-imeyli njengoba kunikeziwe kule manuwali Ifomu lesicelo lifanele

liphelekezelwe ubufakazi bokukhokha imali yesicelo. Abufakwa ubufakazi bokukhokha ngaabantu abefanelekayo ukudedelwa, kodwa izizathu zokudedelwa zifanele zibekwe ngokucacile efomini.

9.4. ISIKHATHI SOKUSEBENZA IZICELO

Ngokwe sahluko sama-25 soMthetho, i-DHS ifanele inqume ukuthi iyasivuma noma iyasala isicelo futhi yazise umfakisisicelo ngokunika izizathu kungakapheli izinsuku ezingama-30 emuva kokuthola isicelo.

Kungakapheli izinsuku ezingama-30 i-DHS ifanele inqume ngokuvuma noma ukwala ukululwa kwesikhathi sesicelo kanye noma ngesikhathi esingekho ngaphezu kwezinsuku ezingama-30 uma kuyisicelo solwazi oluningi, noma uma isicelo sidinga ukuba kucingwe ulwazi olugcinwe kwelinye ihhovisi le-DHS futhi lolo lwazi lungathokali ngokufanele esikhathini sokuqala esiyizinsuku ezingama-30.

I-DHS izokwazisa umfakisisicelo ngokumbhalela uma kudingeka ukwengezwa kwesikhathi.

9.5. IZIMALI EZIKHOKHWAYO

UMthetho uhlinzekela izimali ezimbili ezikhokhwayo, ezaziwa ngokuthi:

9.5.1. IZIMALI EZINGABUYISWA

Umfakisisicelo, ngaphandle komfakisisicelo ocela ulwazi olumayelana naye uqobo, ocela ukufinyeleleka kolwazi olusezandleni zoMnyango uzodingeka ukuba akhokhe imali emisiwe yesicelo angama-R35, 00 njengoba kushiwo kuFomu A, ngaphambi kokuba isicelo sisetshenzwe. Abantu abafakwe ohlwini olusesigabeni 9.5.4 sale manuwali badedelwe ekukhokheni izimali zesicelo.

U-DIO uzobamba i (ama) rekhodi kuze kube umfakisisicelo ozikhokhile izimali ezisetshenziswayo (uma zikhona).

9.5.2. IMALI YOKUFINYELELEKA

- Imali yesicelo ikhokhwa kuzo zonke izimo lapho isicelo sokufinyeleleka kolwazi sivunyiwe ukuze ikhokhelwa izindleko zokukhiqiza futhi, uma kukhona, izimali zokuposa nesikhathi esidingekayo ukucinga nokulungisa irekhodi ukuze lidalulwe.
- Abantu abafakwe ohlwini olusesigabeni 9.5.4 sale manuwali badedelwe ekukhokheni izimali zesicelo.
- Umfakisisicelo ofuna ukufinyeleleka kumakhophi amarekhodi atholakalayo emphakathini akudingekile ukuba akhokhe imali yesicelo engama-R35,00, kodwa uzokhokha imali yokufinyeleleka ukuze kukhiqizwe, uma ikhona.

U-DIO uzobamba irekhodi kuze kube umfakisisicelo ozikhokhile izimali ezisetshenziswayo (uma zikhona).

9.5.3. IDIPHOSI

Uma ukucingwa kwerekhodi kanye nokulungiswa kwerekhodi sokwenziwe ukuze lidalulwe, kumbandakanya amalungiselelo okulenza ukuba litholakale ngohlobo oluceliwe, kudinga isikhathi esingeziwe kunaleso esibekwe ngumthethonqubo, u-DIO ufanele azise umfakisisicelo ukuthi akhokhe ingxenye yemali (engekho ngaphezulu kwesithathu) yokufinyeleleka ekhokhwa uma ukufinyeleleka kuvunyiwe.

Uma idiphozithi ikhokhiwe mayelana nesicelo sokufinyeleleka esinqatshiwe, u-DIO we-DHS uzobuyisela umfakisisicelo idiphozithi.

9.5.4. UKUDEDELWA

Abantu abalandelayo badedelwe ekhokheni imali yokufinyeleleka okucatshwangwa ku-s22 (6) soMthetho:

- Umuntu oyedwa othola umholo, ngemuva kokuba kudonswe izimali, awudluli ama-R14 712, 00 ngonyaka owodwa.
- Abantu abashadile noma abantu abalahlasanayo bebobili abahola umholo ngemuva kokuba kudonswe izimali ongedluli ama-R27 192, 00 ngonyaka.
- Lapho izindleko zokuqoqa nanoma iyiphi imali maqondana nokucinga kanye nokulungiswa kwerekhodi ukuze lidalulwe zedlula imali ebiziwe, imali efana nalena ayisebenzi.
- Ukubiza kokucingwa nokulungiswa kwamarekhodi akusebenzi kumarekhodi omfakisicelo uqobo.
- Izimali zesicelo nezokufinyeleleka azisebenzi kumarekhodi acelwe isikhulu sokunakekela noma ngumphenyi wokunakekela ukwenzela izinhloso zokuphenya ukunakekela noma imibuzo ngokwemibandela yoMthetho Wokunakekela wonyaka we-1998 (uMthetho wama-99 wonyaka we-1998) noma ngokwesahluko sama-44 sezimiso zawo.

10. UKUNQATSHWA KOKUFINYELELEKA KANYE NEZIKHALAZO

10.1. IZIZATHU ZOKUKHALAZA

I-DHS inganqaba isicelo sokufinyeleleka kolwazi laayo uma isicelo solwazi siphathelene:

- Ukuvikelwa ngokugunyazwa kobungasese bengxenye yesithathu engumuntu wemvelo, kumbandakanya umuntu oshonile.
- Nokuvikelwa ngokugunyazwa kwamarekhodi athile oPhiko Lwezentela laseNingizimu Afrika.
- Ukuvikelwa ngokugunyazwa kolwazi lwezohwebo lengxenye yesithathu.
- Ukuvikelwa ngokugunyazwa kolwazi oluthile oluyimfihlo kanye nokuvikelwa kolwazi oluthile oluyimfihlo lwengxenye yesithathu.
- Ukuvikelwa ngokugunyazwa kokuphepha kwabantu ngabanye, kanye nokuvikelwa kwempahla.
- Ukuvikelwa ngokugunyazwa kwamadokodo amaphoyisa ezinqutsheni zebheyili, kanye nokuvikelwa kokuphoqelwa komthetho kanye nezinqubo zomthetho.
- Ukukuvikelwa ngokugunyazwa kwamarekhodi avunyelwe ukuba angakhiqizwa kuzinqubo zomthetho.
- Ezokuvikela, ukuphepha kanye nobudlelwane bamazwe ngamazwe baseRiphabhlikhi.
- Ukunaka kwezohwebo nenhlalakahle yezezimali zaseriphabhulikhi kanye nemisebenzi yokuhweba yoMnyango.
- Ukuvikelwa ngokugunyazwa kolwazi locwaningo lwengxenye yesithathu kanye nokuvikelwa kolwazi locwaningo loMnyango.
- Imisebenzi yoMnyango.
- Izicelo zolwazi ezingasile noma zingukuhlupha, noma ezifaka ukwehluka ngokungafanele kwemithombo yoMnyango.

10.2. UKUDALULA OKUGUNYAZIWE EMPHAKATHINI

Isicelo sokufinyelela kurekhodi esingahle senqatshwe ngokwezizathu zokuqaba ze-PAIA singahle sivunywe, kodwa-ke, ezimweni lapho ukudalulwa kwerekhodi kuzozuzisa umphakathi, futhi uma ukuzuza komphakathi okufana nalokhu ngokucacile kwedlula ukulimala okucatshangwayo ezizathwini zokunqaba.

10.3. UKWENQATSHWA KWESICELO OKUCATSHANGWAYO

Uma u-DIO ehluleka ukuthatha isinqumo nokuphendula uMfakisicelo kungakapheli isikhathi esiyizinsuku ezingama-30, kuzothathwa ngokuthi u-DIO usenqabile isicelo esifana nalesi. Umfakisicelo ngakho-ke angahle safake isikhalazo sangaphakathi alwise ukwalelwa okufana nalokhu.

10.4. IZIXAZULULO UMA ISICELO SINQATSHIWE

10.4.1. UKUKHALAZA KWANGAPHAKATHI

Umfakisicelo ongeneme ngesicelo sakhe sokufinyeleleka kolwazi angafaka isikhalazo sangaphakathi kuNgqongqoshe Womnyango Wezokuhlaliswa Kwabantu aphikise isinqumo okukhulunywa ngaso.

10.4.2. UKUFAKA ISIKHALAZO SANGAPHAKATHI

Isikhalazo sangaphakathi:

- sifanele senziwe zingakapheli izinsuku ezingama-60 ngemuva kokuba umfakisicelo azisiwe ngesinqumo ngesicelo sakhe.
- Kufanele kugcwaliswe ifomu lokukhalaza kwangaphakathi eliqukethwe kusiXhumelo C sale manuwali, eliphinde litholakale kwi-webhusayithi ye-DHS [www.dhs.gov.za], noma kunoma yiliphi ihhovisi le-DHS, ngokucelwa.
- Kufanele kugcwalise ifomu elimisiwe lokukhalaza kwangaphakathi ngokuphelele kukhonjswa ukuthi yisiphi isinqumo esifakelwa isikhalazo sangaphakathi.
- Kusayindwe ifomu lokukhalaza kwangaphakathi esikhaleni esihlinzekiwe.
- Kufakwe isikhalazo sangaphakathi ku-DIO ngokusebenzisa imininingwane yokuxhumana noma ikheli elihlinzekiwe kule manuwali..

10.4.3. USEKELA-MGCINILWAZI UFANELE ADLULISELE UKUKHALAZA KWANGAPHAKATHI KUSIPHATHIMANDLA ESIFANELE

- Kungakapheli izinsuku eziyi-10 zokuthola isikhalazo sangaphakathi u-DIO ufanele asidlulisele, kanye nezizathu zesinqumo ngesicelo, kusiphathimandla esifanele.
- Isiphathimandla esifanele sifanele sicubungule futhi sithathe isinqumo ngesikhalazo sangaphakathi kungakapheli izinsuku ezingama-30 ngemuva kokuba isaziso sesikhalazo sangaphakathi sitholakele.
- Isinqumo sesiphathimandla esifanele sifanele sivume noma sibekela eceleni isinqumo sika-DIO, futhi sifake esikhundleni saso sifake isinqumo saso ngesicelo.

10.5. UKUFAKA ISICELO ENKANTOLO

Umfakisicelo ongaphumelelanga ekukhalazeni kwakhe kwangaphakathi, kungakapheli izinsuku eziyi-180 zokuthola isaziso ngesinqumo sokukhalaza kwakhe kwangaphakathi, angafaka isicelo sokuxazululelwa enkantolo njengoba kushiwo kusahluko sama-78(2).

11. UKUTHOLAKALA KWEMANUWALI

- 11.1.** Lo mhlahlandlela uzokwenziwa ukuba utholakala ngezilimi ezintathu ku-website ye-DHS kanye nakuwo onke amahhovisi omnyango kanye nakuKhomishane Yamalungelo EsiNtu.
- 11.2.** Le manuwali izo izoshicilelwa kuGazethi Kahulumeni.

12. UKUFAKWA KOLWAZI OLUSHA NOKUBUKEZWA KWEMANUWALI

Le manuwali izobukezwa nguMnyango njalo ngonyaka, uma kunesidingo, izolungiswa kabusha futhi ishicilelwe njengoba kulindelwe ku-PAIA.

**ISAZISO SIKAHULUMENI
GOEWERMENTSKENNISGEWING**

**UMNYANGO WEZOBULUNGISWA
DEPARTEMENT VAN JUSTISIE**

Inombolo R.

9 Mashi 2001

**UMTHETHO WOKUQHUTSHEKISELWA PHAMBILI UKUFINYELELEKA KOLWAZI
WONYAKA WE-2000
IZIMISO EZIMAYELANA NOKUQHUTSHEKISELWA PHAMBILI KOKUFINYELELEKA
KOLWAZI**

UNgqongqoshe woMnyango Wezobulungiswa Nokuthuthukiswa Komthethosisekelo, kusahluko sama-92 soMthetho Wokuqhutshekiselwa Phambili Ukufinyeleleka Kolwazi wonyaka we-2000 (uMthetho wesi-2 we-2000), wenze isimiso kule Sheduli.

ISHEDULI

Incazelo

1. Kule Zimiso nanoma iliphi igama noma okushiwo okunikwe incazelo okuyinikiwe eMthethweni kuzoba nencazelo okunikwe yona, ngaphandle uma indikimba ikhomba okuhlukile -
“uMthetho ” usho uMthetho Wokuqhutshekiselwa Phambili Ukufinyeleleka Kolwazi wonyaka we-2000 (uMthetho wesi-2 we-2000).

Ifomu lesicelo

2. Isicelo sokufinyeleleka kurekhodi, njengoba kucatshangwa kusahluko se-18(1) soMthetho, sifanele senziwe ngendlela yeFomu A lesiXhumelo

Izimali ezikhokhwayo zikhokhelwa amarekhodi emigwamanda kahulumeni

3. (1) Imali yokukhiqiza, okukhulunywe ngayo kusahluko se-15(3) soMthetho, zinjengoba zilandela:

Ama-R

(a)	Onke amafothokopi obukhulu bekhasi obungu-A4 noma ingxenywe yawo	0,60
(b)	Amakopi obukhulu bekhasi obungu-A4 noma ingxenywe yawo agcinwe kwikhompyutha noma ngohlobo olufundeka ngogesi noma	

- | | | |
|-----|---|--------|
| | ngohlobo olufundeka ngomshini | 0,40 |
| (c) | Ikopi engohlobo olufundeka ngekhompyutha ku- | |
| | (i) stifi diskhi | 5,00 |
| | (ii) khompekthi diskhi | 40, 00 |
| (d) | (i) Ukubhalwa phansi kwemifanekiso ebukwayo | |
| | Ubukhulu bekhasi obungu-A4 noma ingxenye yabo | 22, 00 |
| | (ii) Ikopi yezinto ezibukwayo | 60, 00 |
| (e) | (i) Ukubhalwa phansi kwemisindo erekhodiwe | |
| | ubukhulu bekhasi obungu-A4 noma ingxenye yabo | 12,00 |
| | (ii) Ikopi yemisindo erekhodiwe | 17, 00 |
- (2) Imali yesicelo ekhokhwa yiwo wonke umfakisicelo, ngaphandle kozifakela yena qobo isicelo okukhulunywe ngaye kusahluko sama-22(1) soMthetho ngama-R35,00.
- (3) Izimali zokufinyeleleka ezikhokhwa ngumfakisicelo okukhulunywe ngaye kusahluko sama-22(7) soMthetho, ngaphandle
uma udedelwe ngokwesahluko sama-22(8) soMthetho zinjengoba zilandela:

Ama-R

- | | | |
|-----|--|--------|
| (a) | Onke amafothokopi obukhulu bekhasi obungu-A4 noma | |
| | ingxenye yawo | 0,60 |
| (b) | Amakopi obukhulu bekhasi obungu-A4 noma ingxenye | |
| | yawo agcinwe kwikhompyutha noma ngohlobo olufundeka ngogesi noma | |
| | ngohlobo olufundeka ngomshini | 0,40 |
| (c) | Ikopi engohlobo olufundeka ngekhompyutha ku- | |
| | (i) stifi diskhi | 5.00 |
| | (ii) khompekthi diskhi | 40,00 |
| (d) | (i) Ukubhalwa phansi ngemifanekiso ebukwayo. | |
| | ubukhulu bekhasi obungu-A4 noma ingxenye yabo | 22,00 |
| | (ii) Ikopi yezinto ezibukwayo | 60, 00 |
| (e) | (i) Ukubhalwa phansi kwemisindo erekhodiwe, | |
| | ubukhulu bekhasi obungu-A4 noma ingxenye yabo | 12,00 |
| | (ii) Ikopi yemisindo erekhodiwe | 17, 00 |

- (f) Ukucinga nokulungisa irekhodi ukuba lidalulwe, ama-R15.00 ihora ngalinye noma ingxenye yehora, kushiya ngaphandle ihora lokuqala ngokwemfanelo elingekayo ekucingeni.
- (4) Imali yokuposa iyakhokhwa uma ikopi yerekhodi ifanele ithunyelwe ngeposi kumfaksicelo.
- (5) Ukwenzela izinhloso zesahluko sama-22 (2) soMthetho, okulandelayo kuyasetshenziswa:
- (a) Amahora ayisithupha njengamahora azodlulwa ngaphambu kokuba kukhokhwe idiphosi; kanye
- (b) nokukodwa kwesithathu semali yokufinyeleleka njengediphosi ekhokhwa ngumfaksicelo.

Ifomu lesicelo

~~Idokumente ngokubhalwa ngokulandelayo soMthetho~~
senziwe ngendlela yeFomu B lesiXhumelo.

Izimali ezikhokhwayo zikhokhelwa amarekhodi emigwamanda kahulumeni

5. (1) Imali yokukhiqiza, okukhulunywe ngayo kusahluko sama-52(3) soMthetho, injengoba ilandela:

	Ama-R
(a) Onke amafothokopi obukhulu bekhasi obungu-A4 noma ingxenye yawo	1,10
(b) Amakopi obukhulu bekhasi obungu-A4 noma ingxenye yawo agcinwe kwikhompyutha noma ngohlobo olufundeka ngogesi noma ngohlobo olufundeka ngomshini	0,75
(c) Ikopi engohlobo olufundeka ngekhompyutha ku-	
(i) stifi diskhi	7,50
(ii) khompekthi diskhi	70,00
(d) (i) Ukubhalwa phansi ngemifanekiso ebukwayo, ubukhulu bekhasi obungu-A4 noma ingxenye yabo	40,00
(ii) Ikopi yezinto ezibukwayo	60, 00
(e) (i) Ukubhalwa phansi kwemisindo erekhodiwe, ubukhulu bekhasi obungu-A4 noma ingxenye yabo	20,00
(ii) Ikopi yemisindo erekhodiwe	30, 00

(2) Imali yesicelo ekhokhwa ngumfaksicelo, ngaphandle kozifakela yena uqobo isicelo, okukhulunywe kusahluko sama-54(1) soMthetho ama-R50, 00.

(3) Izimali zokufinyeleleka ezikhokhwa ngumfakisicelo okukhulunywe ngaye kusahluko sama-54(7) soMthetho, ngaphandle uma udedelwe ngokwesahluko sama-54(8) soMthetho zinjengoba zilandela:

Ama-R

- | | |
|---|--------|
| (a) Onke amafothokopi obukhulu bekhasi obungu-A4 noma | |
| ingxenye yawo | 1,10 |
| (b) Amakopi obukhulu bekhasi obungu-A4 noma ingxenye | |
| yawo agcinwe kwikhompyutha noma ngohlobo olufundeka ngogesi noma | |
| ngohlobo olufundeka ngomshini | 0.75 |
| (c) Ikopi engohlobo olufundeka ngekhompyutha ku- | |
| (i) stifi diskhi | 7,50 |
| (ii) khompekthi diskhi | 70,00 |
| (d) (i) Ukubhalwa phansi ngemifanekiso ebukwayo, | |
| ubukhulu bekhasi obungu-A4 noma ingxenye yabo | 40.00 |
| (ii) Ikopi yezinto ezibukwayo | 60.00 |
| (e) (i) Ukubhalwa phansi kwemisindo erekhodiwe, | |
| ubukhulu bekhasi obungu-A4 noma ingxenye yabo | 20,00 |
| (ii) Ikopi yemisindo erekhodiwe | 30, 00 |
| (f) Ukucinga irekhodi ukuze lidalulwe, ama-R30, 00 ihora ngalinye | |
| noma ingxenye yehora ngokwemfanelo elingekayo ekucingeni | |
| okunjengalokhu. | |

(4) Imali yokuposa iyakhokhwa uma ikopi yerekhodi ifanele ithunyelwe ngeposi kumfakisicelo.

(5) Ukwenzelwa izinhloso zesahluko sama-54(2) soMthetho, okulandelayo kuyasenziswa

- Amahora ayisithupha njengamahora azodlulwa ngaphambu kokuba kukhokhwe idiphosi; kanye
- nokukodwa kwesithathu semali yokufinyeleleka njengediphosi ekhokhwa ngumfakisicelo.

Isaziso ngokukhalazo kwangaphakathi

6. Isaziso sokukhalaza kwangaphakathi, njengoba kucatshangwa kusahluko sama-75(1) soMthetho, sifanele senziwe ngendlela yeFomu C lesiXhumelo

Izimali ezikhokhwayo zokukhalaza

7. Imali yokukhalza ekhokhwayo mayelana nokufakwa kwesikhalazo kwangaphakathi ngumfakisicelo ephikisa ukunqantshwa kokufinyeleleka, njengoba icatshangwa kusahluko sama-75(3)(a) soMthetho. ama-R 50,00 .

Intela yentengo (value-added tax)

8. Imigwamanda kahulumeni neyangasese ebhalisiwe ngaphansi kukahulumeni koMthetho Wentela Yentengo wonyaka we-1991 (uMthetho wama-89 Wonyaka we-1991), abakhokhi bentela bangafaka intela yentengo kuzo zonke izimali ezibekiwe ngokwale mibandela.

Ukuqala ukusebenza

9. Lezi zimiso zizoqala ukusebenza mhla zi-9 Mashi 2001.



IRIPHABHLIKHI YASENINGIZIMU AFRIKA

J750

**UMnyango Kazwelonke Wezokuhlaliswa Kwabantu
UFomu A we-PAIA Wokufinyeleleka Ku (ma) rekhodi Lomgwamanda Kahulumeni**

LE NGXENYE ISETSHENZISWA NGUMNYANGO	
Isicelo samukelwe ngu-_____	Inombolo Yerefrensi:_____ (shono)
isikhundla ngokomsebenzi, igama nesibongo somphathi-lwazi/usekela-mphathi-lwazi). mhla zi- _____(usuku), e-/o- _____(indawo),	
Imali yesicelo (uma ikhona):ama-R_____	
Idiphozi (uma ikhona): ama-R_____	
Imali yokufinyeleleka: ama-R_____	

(Isahluko se-18 (1) soMthetho Wokufinyeleleka Olwazini we-2000 (uMthetho wesi-2 we-2000)) [Isimiso sesi-6]

A. Iminingwane yomgwamanda kahulumeni

Thumela noma ulethe iFomu lakho Lesicelo ku:-

Iminingwane Yokuxhumana Nesikhungo se-PAIA			
Ikheli Laseposini:	USEkela-mgcinilwazi UMnyango Kazwelonke Wezokuhlaliswa Kwabantu Private Bag X644 PRETORIA Republic of South Africa 0001		
Ikheli Lomgwaqo: (Ukuze ilethwe ngesandla)	USEkela-Mgcinilwazi: PAIA 260 Justice Mahomed Street Sunnyside PRETORIA		
Inombolo Yefeksi	(086) 471 1939		
Ikheli le-imeyili	paia@dhs.gov.za		
Izikhathi Zokusebenza Kwehhovisi:	07:30 - 09:30 09:45 - 12:15 13:00 - 14:30 14:45 - 16:00	Izikhathi Zabashaya Umshini:	10:00 - 11:00 14:00 - 14:30
Iminingwane Yasebhange	Iminingwane Yebhange: DEPARTMENT OF HUMAN SETTLEMENTS Ibhange : Standard Bank, Van der Walt (010145), Inombolo Ye-akhawunti: 010160310		

IFOMU ISICELO SOKUFINYELELEKA KUREKHODI LOMGWAMANDA KAHULUMENI

B. imininingwane yomuntu ofaka isicelo sokufinyeleleka kwirekhodi Ingebe ungu-: (Faka uphawu X ebhokisini elifanele)

	Ozifakela yena qobo isicelo (Ofuna ukufinyeleleka kurekhodi eliqukethe imininingwane ngaye uqobo) QAPHELA: Sicela ufake ikopi kaMazisi wakho ukuze kunqandwe ukudalulwa ngephutha imininingwane yomuntu uqobo.
	Umfakisicelo (Umuntu afaka isicelo skufinyeleleka kurekhodi loMnyango Kazwelonke Wezokuhlaliswa Kwabantu)
	Ufakisicelo Ongumgwamanda Womphakathi (Leyo migwamanda Yomphakathi esebenzisa amandla omphakathi noma eyenza umsebenzi womphakathi ngokoMthetho)

- (a) Imininingwane yomuntu ocela ukufinyeleleka kwirekhodi ifanele inikezwe ngezansi.
 (b) Ikheli futhi/noma inombolo yefeksi yaseRiphabhlikhi yalapho kufanele ulwazi luzothunyelwa khona ifanele inikezwe.
 (c) Ubufakazi bokuthi isicelo senziwa njengobani ngokwesikhundla, uma bukhona, bufanele bufakwe.

Amagama aphelele nesibongo:

Inombolo

--	--	--	--	--	--	--	--	--	--	--	--	--	--

kamazisi: Ikheli

leposi:

()

Inombolo yefeksi:

()

Inombolo yocingo:

C. Imininingwane yomuntu ofakelwa isicelo

Lesi sahluko kufanele sigwaliswe KUPHELA uma umfakisicelo esifakela omunye umuntu.

Amagama aphelele nesibongo:

Inombolo ye-ID:

--	--	--	--	--	--	--	--	--	--	--	--	--	--

Isikhundla sokuthi isicelo senziwa njengobani uma senziwela omunye umuntu:

D. Imininingwane yerekhodi

- (a) Nekeza ngemininingwane ephelele yerekhodi okucelwa ukufinyeleleka kulo, kumbandakanya inombolo yerefrensi uma uyazi, ukwenzela ukuthi litholakale irekhodi.
- (b) Uma isikhala osinikiwe sisincane, sicela uqhubekele ekhasini elehlukile bese ulinamathisela kuleli fomu. Umfakisicelo kufanele asayinde onke amaphepha angeziwe.

1. Ukuchazwa kwerekhodi noma izingxenye ezifanele zerekhodi:

.....

.....

.....

.....

.....

2. Inombolo yerefrensi, uma ikhona:

3. Nanoma ngabe imiphi eminye imininingwane yerekhodi, okungukuthi uhlobo lwerekhodi, isib. amamininthe, njll...:

4. UMnyango/iGatsha lapho irekhodi ligcinwe khona (uma kwaziwa)

.....

.....

E. Izimali ezikhokhwayo

- (a) Isicelo sokufinyeleleka kwirekhodi, ngaphandle kwerekhodi eliphethwe imininingwane yakho ngqo, luzosetshenzwa kuphela ngemuva kokuba imali yesicelo isikhokhiwe, imali yesicelelo ama-R35, 00.
- (b) Uzokwaziswa ngesamba semali edingeka ukuba ikhokhwe njengemali ekhokhwayo yesicelo.
- (c) Imali ekhokhwayo yokufinyeleleka kwirekhodi ilele ohlotsheni ukufinyeleleka okudingeka ngalo futhi nasesikhathini esidingekayo ukucinga nokulungisa irekhodi.
- (d) uma ufanelekile ukuba udedelwa ukuba ukhokhe nanoma ngabe iyiphi imali ekhokhwayo, sicela usho isizathu sokudedelwa.

Isizathu sokudedelwa ukuba ukhokhe izimali:

.....

.....

IFOMU ISICELO SOKUFINYELELEKA KUREKHODI LOMGWAMANDA KAHULUMENI

F. Uhlobo lokufinyeleleka kwirekhodi

Uma uvinjwe ukukhubazeka ukuba ufunde, ubukeze noma ulalele irekhodi ngohlobo ukufinyeleleka okuhlinzekelwe ngalo ku-1 ukuya ku-4 ngezansi, shono ukukhubazeka kwakho futhi usho nohlobo irekhodi elidingeka ngalo.

Ukukhubazeka:	Uhlobo irekhodi elidingeka ngalo:
Faka uphawu u-X ebhokisini elifanele.	
AMANOTHI:	
(a) Ukuhambisana nesicelo sakho sokufinyeleleka olwazini ngohlobo oluphawuliwe kungalala ohlotsheni irekhodi elitholakala ngalo.	
(b) Ukufinyeleleka ngohlobo oluceliwe kunganqathswa ezimweni ezithile. Kulezi zimo uzokwaziswa uma ukufinyeleleka kuzotholakala ngolunye uhlobo.	
(c) Imali ekhokhwayo yokufinyeleleka kwirekhodi, uma ikhona, izonqunywa kancane nguhlobo lokufinyeleleka oluceliwe.	
(d) Uma irekhodi lingatholakali ngolimi oluthandayo noma lungekho ulimi oluthathandwayo olushiwo ngumfakisicelo, ukufinyeleleka kuyonikezwa ngolimi irekhodi elitholakala ngalo [isahluko sama-31J.	
(e) Imali yokucinga nokulungiselela ukudalulwa kwirekhodi eliceliwe ngama-R15,00 ihora ngalinye noma ingxeny yehora, kushiya ngaphandle ihora lokuqala	

1. Uma irekhodi lingohlobo olubhaliwe noma olugayiwe:					
	ikopi yerekhodi*		ukuhlolwa kwirekhodi		
2. Uma irekhodi lakhiwe yizinto ezibukwayo -(lokhu kumbandakanya izithombe, amaslayidi,, okurekhodiwe kwevideo, imifanekiso eyakhiwe ngekhopyutha, imidwebo,					
	ukubuka izithombe		Ikopi yezithombe*	Okubhaliwe ngezithombe*	
3. Uma irekhodi lenziwe ngamagama noma ngolwazi olungakhiqizwa futhi ngomsindo:					
	ukulalela umsindo oqoshiwe (ikhasethi)		umbhalo womsindo oqoshiwe (umbhalo		
4. Uma irekhodi ligcinwe kwikhompyutha noma ngohlobo olufundeka ngomshini:					
	ikopi egayiwe yerekhodi*		ikopi egayiwe yolwazi olususelwa kwirekhodi*	ikopi yohlobo olufundekayo ngekhompyutha* (isitifi diskhi noma ikhompekthi diskhi)	
*Uma ucele ikopi noma umbhalo werekhodi (elingenhla), ingabe uthanda ukuba ikopi noma umbhalo werekhodi uposelwe wena? Imali yokuposa iyakhokhwa.				YEBO	CH A
Qaphela ukuthi uma irekhodi lingatholakali ngolimi oluthandayo, ukufinyeleleka kungatholakala ngolimi irekhodi elitholakala ngalo.					
Yiluphi ulimi ongathanda ukuthola ngalo irekhodi?					

G. Isaziso ngesinqumo mayelana nesicelo sokufinyeleleka

Uyokwaziswa ngokubhalelwa uma isicelo sakho samulelekile/senqatshiwe. Uma ufisa ukwaziswa ngenye indlela, sicela uyisho leyo ndlela futhi uhlinzeke ngemininingwane evumela ukuhambisana nesicelo sakho.
--

Ungathanda ukwaziswa kanjani ngesinqumo mayelana nesicelo sakho sokufinyeleleka kwirekhodi?

IFOMU ISICELO SOKUFINYELELEKA KUREKHODI LOMGWAMANDA KAHULUMENI

Isayindwe e-/o- ngalolu suku lomhla zi-..... ku-..... wonyaka we-

.....
ISIGINESHA YOMFAKISICELO/
YOMUNTU OWENZIWELEWA ISICELO

UFOMU B

ISAZISO NGESIKHALAZO SANGAPHAKATHI

(Isahluko sama-75 soMthetho Wokufinyeleleka Kolwazi we-2000 (uMthetho wesi-2 we-2000))

[Umthetho wesi-8]

**SHONO INOMBOLO YAKHO
YEREFRENSI:**

Imininingwane yomgwamanda kahulumeni

UMgcinilwazi/uSekelea-Mgcinilwazi:

- a) *Imininingwane yomuntu ofaka isikhalazo sangaphakathi ifanele inikezwe ngezansi.*
- b) *Ubufakazi bokuthi sifakwa njengobani isikhalazo ngokwesikhundla, uma bukhona, bufanele bufakwe.*
- c) *Uma umfakisicelo kungumuntu wesithathu futhi hhayi umuntu okunguyena ofake isicelo sokufinyeleleka kolwazi, imininingwane yomfakisicelo ifanele inikezwe ku-C ngezansi.*

A. Imininingwane yomfakisicelo/ingxenye yesithathu efaka isikhalazo sangaphakathi

Amagama aphelele nesibongo: _____

Inombolo ye-ID: _____

Ikheli leposi: _____

_____ Inombolo yefeksi: _____

Inombolo yocingo: _____ Ikheli le-emeyili: _____

Isikhundla sothi isikhalazo sangaphakathi senziwa njengobani senziwela omunye umuntu:

Imininingwane yomfaksicelo

Lesi sahluko kufanele sigcwaliswe KUPHELA uma ingxenye yesithathu (ngaphandle komfaksicelo) ifaka isikhalazo sangaphakathi.

Amagama aphelele nesibongo: _____

Inombolo ye-ID: _____

C. Isinqumo isikhalazo sangaphakathi esifakelwa ukusiphikisa

<i>Faka uphawu X ebhokisini elifanele lesinqumo isikhalazo sangaphakathi esifakelwa ukusiphikisa:</i>	
	Ukunqantshwa kwesicelo sokufinyeleleka
	Isinqumo mayelana nezimali ezibekwe ngokwesigaba sama-22 soMthetho
	Isinqumo mayelana nokwelulwa kwesikhathi isicelo okufanele sisetshenzwe ngaso ngokwesigaba sama-26 (1) soMthetho
	Isinqumo ngokwesigaba sama-29 (3) soMthetho sokunqaba ukufinyeleleka ngohlobo olucelwe ngumfaksicelo
	Isinqumo sokuvuma isicelo sokufinyeleleka

D. Izizathu zokukhalaza

Uma isikhala osinikiwe sisincane, sicela uqhubekele ekhasini elehlukile bese ulinamathisela kuleli formu. Ufanele usayinde onke amaphepha angeziwe.

Shono izizathu ukukhalaza kwangaphakathi okususelwa kuzo. _____

Shono nanoma yiluphi olunye ulwazi olungafaneleka mayelana nesikhalazo: _____

Isaziso ngesinqumo ngesikhalazo

Uzokwaziswa ngokubhaliwe ngesinqumo sokukhalaza kwakho kwangaphakathi. Uma ufisa ukwaziswa ngenye indlela, sicela uyisho leyo ndlela futhi uhlinzeke ngemininingwane evumela ukuhambisana nesicelo sakho.

Shono indlela: _____

Iminingwane yendlela: _____

Isayindwe e-/o- _____ ngalolu _____ lomhla zi- _____ 20 _____

ISIGINESHA YOMKHALAZI

LE NGXENYE ISETSHENZISWA NGUMNYANGO:

UKUREKHODWA OKUSEMTHETHWENI

KWESIKHALAZO SANGAPHA KATHI: Isikhalazo satholwa mhla zi-:

(isikhundla ngokomsebenzi,

igama nesibongo somgcinilwazi/usekela-mgcinilwazi).

Isikhalazo sabe siphelkelwaa izizathu ngesinqumo somgcinilwazi/sikasekela-mgcinilwazi kanye, lapho ikhona, neminingwane yengxenywe yesithathu orekhodi limayelana nayo, esifakwe ngumgcinilwazi/usekelela-mgcinilwazi mhla zi-:_____ (usuku) kusiphathimandla esifanele.

UMPHUMELA WOKUKHALAZA

ISINQUMO SOMGCINILWAZI/SIKASEKELA-MGCINILWAZI SIQINISEKISIWE/ISINQUMO ESISHA ESIKHISHIWE

ISINQUMO ESISHA:

USUKU:

ISIPHATHIMANDLA ESIFANELE:

Sitholwe uMgcinilwazi/uSekela-Mgcinilwazi :iminingwane sivela kusiphathimandla esifanele mhla zi- (usuku):_____ mhla zi-